

EDIE CREEK



ANGUS



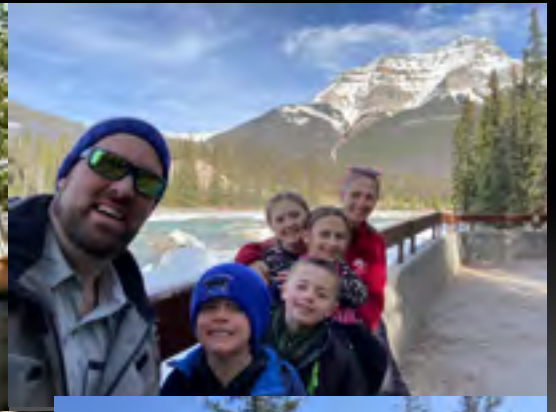
*Selling*

54 BULLS • 11 BRED HEIFERS • OCC SEMEN

*17th Annual  
Bull Sale*

**MARCH 9, 2024**  
SALE TIME: 1 P.M. CST





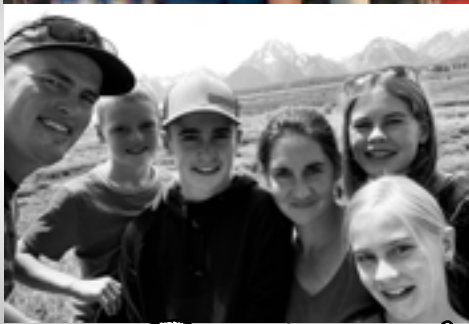
MARILYN & HERMAN BOUW



# *Jonathan's Family*







# Stefan's Family



HERMAN & MARILYN BOUW



# WELCOME TO THE 17TH ANNUAL EDIE CREEK ANGUS 2-YEAR OLD BULL & FEMALE SALE! "BRINGING IT HOME IN 2024!"



We appreciate your interest in our breeding program! Our program centres around providing maternal genetics that are adaptable to harsh environments, and that help our customers become more profitable as they require less inputs of feed and labour by contributing genetics that have inherent fertility and thrive in extensive grazing scenarios.

To quote our mentor and friend, the late Ryan Neiman: *"Given the continued market volatility and extreme variability in region, weather, and climate, we still believe that the proven, maternally oriented cattle we strive for give us the best opportunity for profitability. By emphasizing the conversion of low quality forage (grass) in to high quality protein (beef), we are choosing cattle that thrive in this local environment of often harsh winters and variable summers."* Ryan Neiman's breeding philosophy will endure as will his legacy of breeding sound & functional cattle. We have focused for many years on improving our cowherd and after culling for fertility, udder structure, foot quality, disposition and maternal excellence for many years, we believe you will be hard-pressed to find another breeding program that is as consistent in type and kind. We are the only sale that we know of that offers 85% of the bulls born in the 1st cycle, from a herd that focuses on intrinsic fertility and works for a living. Our cow herd averages 1230 lbs in a 4-frame package.

We are very grateful to have some carryover feed from the year before, as well as having had enough soil moisture and sporadic rainfall to grow some decent feed crops this past growing season. After the droughts of '17-'21 here, we don't take feed for granted like we have in the past. Our hearts go out to all of our friends who are still struggling with drought conditions and the difficult decisions that need to be made in that scenario!

Cattle markets are strong, which we're also grateful for since the cost of beef production has risen over the last few years & higher prices are needed to make up for lean years and to properly reflect the fundamentals of the cowherd sell-down that has resulted from drought conditions. There should soon be strong demand coming for replacement females of the right kind. Buying Edie Creek Angus Bulls will help you create those females!

The biggest change about this year's bull sale is that we will be hosting it at Edie Creek Angus—yup, you heard it: **The sale will be held in Anola for the first time!** Viewing will be held in the bull pens in our wintering yard, and the sale will be conducted in-person & ONLINE from the Anola Community Club, which is a mile and a half from the yard. We have greatly enjoyed working with all the people at the Ashern Auction Mart, and will miss working with all of the same folks! We again have auctioneer Tyler Slawinski to conduct our 17th annual sale, with Kirk Kiesman & Tyson Cook from the Ashern Mart again serving as ringmen in our sale to catch bids from the in-person crowd.

We have also changed Online Auction providers this year: Sarah Buchanan has moved on from DV Auction to DLMS, and while we really enjoyed working with Sarah, we chose to try working with **Jill Renton of TEAM Auctions** for the Online portion of our sale this year, whom Stefan met through his connections with the Cattlemen's Young Leaders program.

What hasn't changed is that we will be offering slowly developed **2-year old bulls** and **bred heifers** that will reliably transmit maternal improvements to your herd. Fertility, Longevity, and soundness is what you can expect from an Edie Creek Angus bull, along with **excellent temperaments**, as we have handled these bulls for almost 2 years, and interacted with them regularly in our intensive grazing management. The bulls are well-trained to electric fences.

Thanks to all of our long-time customers for your support, and for the encouraging stories of how these genetics have impacted the quality of your cattle and lives.

*Jonathan Boun*

EDIE CREEK



ANGUS

17th Annual Bull Sale

MARCH 9  
2024

SALE TIME: 1 P.M. CST

— JONATHAN —

(204) 471-4696

— STEFAN —

(204) 232-1620

ANOLA, MANITOBA

Connect with  
us online:



www.EdieCreekAngus.com



## ON OFFER:

### 54 BULLS

14 Red Angus • 40 Black Angus

### 11 BRED HEIFERS

6 Red Angus • 5 Black Angus

### SEMEN

4 straws of OCC Legacy 839L

4 straws of OCC Missing Link 830M

4 straws of OCC Magnum 749M

Please come to our Home yard to view the bulls - Type Edie Creek Angus in Google Maps, and it will bring you to us. The sale will be held at the Anola Community Club, which is 1.5 miles from our yard. We are about 20 mins. East of Winnipeg.

#### VIDEO SALE LOCATION:

**Anola Community Club**

**35085 MB-15, Anola, MB**

**VIDEO ONLY SALE:** Bulls & Bred Heifers will remain at the Edie Creek Angus home yard, videos of the sale animals will be played at the sale. Semen is stored at Edie Creek Angus, and can be picked up or shipped from there anytime after the sale.

**SALE ORDER:** Bulls and females will sell in catalog order.

**VIEWING LOCATION:** You are welcome to come in the days before the sale so that we can tour you through the cows & bulls. **59018 Stoneridge Road, Anola, Manitoba.**

**AUCTIONEER:** Tyler Slawinski • (204) 672-0450

#### RINGMEN:

Kirk Kiesman • (204) 768-0019

Tyson Cook • (204) 881-5659

**VIDEO AUCTION:** Videos of all the sale bulls are available. Please head to our website for links to videos and Team Live Auction Bidding.

**SUPPLEMENT INFORMATION:** Scrotal circumferences, hip height & weights will be available on sale day

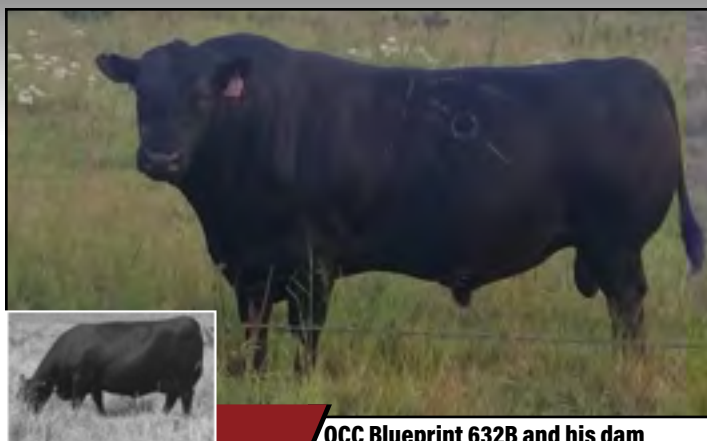
**SEMEN INTEREST:** Edie Creek Angus reserves a 1/3 semen interest & the right to collect semen for in-herd use on all bulls selling at your convenience and our cost

**LUNCH:** Come early on sale day to look through the bulls and enjoy lunch with us! Lunch will be served at the Anola Community Club (1.5 miles from the yard) at 11:30.

Please check our website for more information



# REFERENCE SIRES



**OCC Blueprint 632B and his dam**

## **R1** **OCC GATE KEEPER 678G**

TATT00: 678G DOB: 3/30/2018 REG#: 20007907

CALVING EASE	4
UDDER	4
FLESHING	4
ADD	8

O C C MODERATOR 825M  
**O C C BLUEPRINT 632B**  
O C C DIXIE ERICA 628W

O C C GREAT PLAINS 943G  
**O C C DIXIE ERICA 638D**  
O C C DIXIE ERICA 721Y

O C C HEADLINER 661H  
O C C DIXIE ERICA 845K  
O C C PRACTICAL 841P  
CHLOE DIXIE ERICA 7313  
N BAR EMULATION EXT  
DIXIE ERICA OF C H 1019  
O C C PRACTICAL 841P  
O C C DIXIE ERICA 808U

EPD'S	CED: 8	BW: 2.1	WW: 33	YW: 64	MILK: 21
-------	--------	---------	--------	--------	----------

- Gate Keeper is a friendly bull that we can walk up to and scratch.
- We are expecting great udders from this bull with him line bred to OCC Practical, and having the OCC Dixie Erica 628W cow in his pedigree, whom we have seen a number of times.
- 678G was the most expensive bull we have ever bought and was one of the high selling bulls at the 2021 OCC sale. He represents balance in the gene pool, blending the Traveler, Rainmaker, Rito and Emulation lines that have built the OCC program.
- We brought G.K. up from Kansas to improve fleshing ability and udder quality in our gene pool. We are very excited about his sons in this sale. They check off all the boxes - Moderate, Maternal, Easy Calving, Easy Fleshing.

## **R2** **OCC GUNTHER 624G**

TATT00: 624G DOB: 3/17/2019 REG#: 4223668

CALVING EASE	5
UDDER	4
FLESHING	4
ADD	9

BECKTON NEBULA P P707  
**REDHILL P707 NEBULA 153Z**  
BUF CRK REDPRIDE P154

OCC RED GRAZER 610Z  
**OCC VANESSA 604C**  
OCC VANESSA 829S

BECKTON NEBULA M045  
BECKTON LANA M809 EP  
BECKTON JULIAN GG B571  
MRM 832 8664 9005  
BB 6021 GRAZER 6242  
OCC VANESSA 829S  
PCC COLORADO HOBO  
OCC VANESSA 768P

EPD'S	CED: 13	BW: -4.0	WW: 47	YW: 79	MILK: 28
-------	---------	----------	--------	--------	----------

- The first summer that 624G came up from Kansas, he got 95% of his cows bred, which is above average in our forage-based, low-input system.
- Gunther was selected based on the linebred strengths of the maternal granddam 829S as well as the reputable sires from the Beckton program represented on the sire's side: Nebula P P707 and Julian GG B571.
- Gunther has an excellent pelvic structure that will add maternal calving ease and functionality to his sons and daughters.
- Tim Ohlde sold a full flush brother to our Gunther 624G bull and had this to say about OCC Forefront 750F- "We have maintained a small herd of Red Angus cows built around his dam, Vanessa 604C, and her full ET sisters. The dam is sired by OCC Red Grazer 610Z, a bull that sires those moderate, sound, big volume, good uddered cows that everyone is searching for."
- Pictured as a 3 year old, he has grown outwards and filled-in considerably since the photo.

## **R3** **EDIE CREEK GREAT ONE 77F**

TATT00: 77F DOB: 2/5/2018 REG#: 2064633

CALVING EASE	4
UDDER	5
FLESHING	4
ADD	3

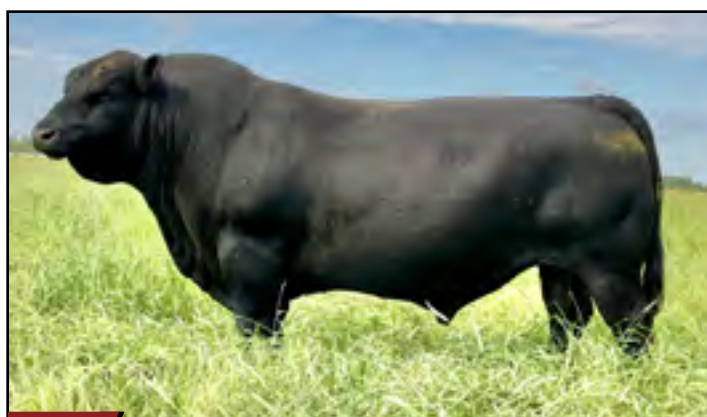
O C C GREAT PLAINS 943G  
**EDIE CREEK GREAT ONE 79Y**  
O C C JUANADA 737L

O MR BANJO 41 147 LOGO  
**CH GEORGINA 626**  
CH GEORGINA 369

N BAR EMULATION EXT  
DIXIE ERICA OF C H 1019  
O C C HEADLINER 661H OSF  
O C C JUANADA 856F  
BANJO OF WYE UMF 6413  
O MISS ALAP L 2246-41  
SHOSHONE BALLARD 628  
MH GEORGINA 619

EPD'S	CED: 4	BW: 0.9	WW: 37	YW: 62	MILK: 17
-------	--------	---------	--------	--------	----------

- 77F was a prolific breeder having a 97% breed up in our worst drought on 50 2-4yr old cows
- 77F was structurally sound, thrived in our environment and has the maternal lineage to accomplish our breeding goals.
- His maternal sisters in our herd have been hardy cows that have been more fertile than their dams. He has great slope from hooks to pins, excellent neck extension and hard, tidy feet.
- He also adds length of body to his calves. We bought his dam from Monte in 2016. She was very feminine and a favourite cow before she over-centered & died the winter after raising 77F.
- 77F is an udder improver. His daughters have some of the best udders we've ever seen, having tight attachment & small teats.



**Edie Creek Great One 77F**



**Edie Creek Full Bore 34F - Sire of Edie Creek Full Bore 31H**



**Loyning Equinox 7 - Sire of Loyning Equinox 0009**

## R4 EDIE CREEK FULL BORE 31H

TATTOO: 31H DOB: 4/23/2020 REG#: 2189017

CALVING EASE	5	COLE CREEK FULL BORE 730	COLE CREEK BLACK CEDAR 46P
UDDER	4.5	<b>EDIE CREEK FULL BORE 34F</b>	COLE CREEK S G JUMBOLEEN 76P
FLESHING	5	OCC DIXIE ERICA 606S	OCC GREAT PLAINS 943G
ADD	10	EDIE CREEK 839L 298 LEGACY 5Y	OCC DIXIE ERICA 612H
		<b>EDIE CREEK DIXIE ERICA 71B</b>	OCC LEGACY 839L
		CROWFOOT DIXIE ERICA 4895P	CROWFOOT ROSE LEE 5823R
			CANE RIDGE CHALLENGER 2334
			CROWFOOT DIXIE ERICA 2629M

EPD'S	CED: 11	BW: -0.9	WW: 43	YW: 77	MILK: 24
-------	---------	----------	--------	--------	----------

- 31H was a bull that brought us good calving ease and fleshing ability. His dam is a favourite in the herd: she was designated as an elite dam in, 2022 with 5 calves with an average wean ratio of 108. She had plenty of cream that gave her calves terrific early growth. This growth did not continue into a larger mature frame size, just good weaning weights.
- An excellent maternal brother to 31H sells as lot 16, he will be a top pick on sale day. Previous maternal brother are working at Tri-Step Ranch and Doe River Colony, and the 71B cow has calved in the first cycle every year.
- Paternal Granddam is the excellent 606S cow, whose resumé in our herd will be hard to match for a long time.



**OCC Easy Red 868A**

## R6 OCC EASY RED 868A

TATTOO: 868A DOB: 9/05/2013 REG#: 3506020

CALVING EASE	4	OCC LINEBRED 801R	OCC LINEBRED 661L
UDDER	3	<b>OCC EASY RED</b>	OCC VANESSA 871L
FLESHING	5	OCC VANESSA 829S	PCC COLORADO HOB0
ADD	N/A	OCC RED ROCK 864U	OCC VANESSA 768P
		<b>OCC VANESSA 797Y</b>	JORDONS RED ROCK 858N
		OCC VANESSA 929T	OCC VANESSA 707S
			OCC HOMER 650H
			OCC VANESSA 737R

EPD'S	CED: 15	BW: -3.2	WW: 45	YW: 74	MILK: 28
-------	---------	----------	--------	--------	----------

- OCC Easy Red 868A is a one-of-a-kind bull in Canada. We have found that Easy Red does phenotypically what we are trying to do with our Black Angus program in a linebred, genetically prepotent RED package!
- Easy Red will fix what the Red Angus breed needs fixing: foot quality, natural muscling ability & ease of fleshing on forage alone.
- He traces 9x to Dixie Erica 1019, the foundation cow of the black program at OCC and 5x to PCC Colorado Hobo. 868A has also Leptin Genotype tested as "TT".
- There are 2 sons in this year's sale, and almost all the red bulls in this sale are out of Easy Red daughters, he will play a large role in our Red Angus herd for years to come. OCC Easy Red 868A is now deceased.

## R5 LOYNING EQUINOX 0009

TATTOO: 0009 DOB: 2/23/2020 REG#: 19875754

CALVING EASE	3.5	HORSE BUTTE 6141 OF 3141	HORSE BUTTE 1116 OF 3116
UDDER	4	<b>LOYNING EQUINOX 7</b>	SHOSHONE ESTER 3141
FLESHING	3	JAD ESTER 3750	M C C LOGAN
ADD	7	PAPA FORTE 1921	SHOSHONE ESTER 3128
		<b>LOYNING ESTER 7008</b>	PAPA OPTIMA 9818
		HBR SHOSHONE ESTER 7133	PAPA ENVIOUS BLACKBIRD 8832
			HORSE BUTTE 1126 OF 3128
			SHOSHONE ESTER 3131

EPD'S	CED: 7	BW: 0.7	WW: 43	YW: 70	MILK: 25
-------	--------	---------	--------	--------	----------

- We bought Equinox from Loyning Angus in Bridger, Montana to insert maternal genetics from Shoshone Angus into our herd. We have been heavily using OCC Great Plains and his full sister in our herd as cow makers, and have seen how the Shoshone gene pool can produce similar cattle.
- Equinox is linebred to the Shoshone Ester cow family. His dam is a productive cow that is very fertile and sound.
- We also were very impressed with his paternal grandsire, Horse Butte 6141 of 3141 in the Diamond Angus Ranch breeding program in Wood, SD. The daughters of 6141 were hardy, feminine, & fertile.



**MH Titan 752 and his dam**

## R7 MH TITAN 752

TATTOO: 752 DOB: 4/18/2007 REG#: 15796813

CALVING EASE	4	N BAR EMULATION EXT	EMULATION N BAR 5522
UDDER	5	<b>O C C GREAT PLAINS 943G</b>	N BAR PRIMROSE 2424
FLESHING	3	DIXIE ERICA OF C H 1019	PBC 707 1M F0203
ADD	14	O C C HOMER 650H	DIXIE ERICA OF C H 615
		<b>MH MELISA 357</b>	O C C FOCUS 813F
		MH MELISA 1147	O C C DIXIE ERICA 816B
			O C C ANCHOR 771A
			D D A MELISA 545

EPD'S	CED: 9	BW: 0.4	WW: 28	YW: 60	MILK: 17
-------	--------	---------	--------	--------	----------

- MH Titan 752 will increase fertility, function, and longevity in any pedigree he is in.
- He bred 40+ cows as a 11yr old bull, and had a smaller breeding group as a 12 and 13yr old.
- His breeder, Monte Howrey, said "Titan: the older he gets, the more I appreciate him. Just no holes in him: feet are great, Athletic, incredible disposition. Fertile and highly intelligent...he's probably the most USEFUL bull I have ever bred."
- Titan comes from the same cow family as DDA Emblazon 27C.
- We don't think you'll find better feet on a mature bull than Titan's, they are impeccable.
- Titan also tested "TT" for Leptin in the Quantum DNA test. MH Titan 752 is now deceased.



# WHY BUY EDIE CREEK BULLS?

We are over 20 years along in our journey of genetic progress and have learned many lessons on the way! We've learned that there is no such thing as a "free lunch": not in physics, economics, or in producing beef cattle. The math is simple. The more time and money you invest into your cattle the more you must get out of them. Solar Energy and Hybrid Vigour are the closest things we have to a "free lunch", so we need to maximize their cumulative benefits, with cow herds that efficiently turn low quality forages (grass) into high quality protein (beef).

Before the drought of 2021, winter or summer, our cows have taken care of their own daily needs for over a decade on a zero starch, forage-only program. We have used this as a selection pressure on our cow herd. Not all cows are built to thrive and rebreed on a forage-only diet. We have moved forward with the cow families that remain. They are fertile, moderate 1250lb cows that maintain excellent udders while calving on pasture, and carefully mother their calves!

To build on a foundation of longevity, we use Herdsires that have dams and grandams that have produced calves well into their teens. The oldest dam (recently departed) would be 20yr old OCC Dixie Erica 693N and her dam produced until she was 19yrs old.

Reproduction is the most important factor affecting profitability. We have tightened the screws on reproductive longevity by shortening our breeding season and using multi-sire breeding groups. Heifers are exposed to bulls for 45 days, and the cows see bulls for 50 days. The two main cow herds had Angus bulls for the first 30 days, and a Fleckvieh bull for the last cycle—thus ensuring only the most fertile females produce offspring that we select purebred parent stock from. Multi-sire breeding groups ensure that the most fertile bulls get the job done — another step in improving fertility. After all, reproduction is 5x more important than growth rate, and 10x more important than carcass quality when it comes to your profit.

Our gene pool stems from proven descendants of renowned maternal bloodlines such as Traveler, Emulation, Shoshone, Quantum & Wye that have thrived in low-input environments across the continent. We stack cows and cow families in our pedigrees that have raised calves every year into their teens. This enables us to offer a more consistent pen of bulls every year: prepotently bred bulls which stamp a consistent pen of calves, including daughters that can be counted on to become reliable mama cows.

Cattle have vast complexities & wide-ranging genetic expressions in differing environments. Pursuing profitable, ranch adapted cattle requires the same maternal performance traits, no matter where you are. With the complexities of genetics, we rely on animals that have performed in the environment we ask them to, to show us who to select as breeding stock. This method of selection has taught us a lot over the years.

Our cattle are not perfect. But they are bred for a specific purpose. Time and experience has shown performance and carcass EPD's can not guide the selection of a functional cowherd in real-world conditions, and are in fact antagonistic traits to fertility, longevity and functionality in the cow herd. Many breeding programs claim their bulls can do all things - Maximizing growth and offering maternal

greatness in one package. There is no moderate-framed cow herd that comes from using bulls bred for maximizing growth. You can't get a 1250lb cow if the bred heifer is weighing 1250lbs. Same goes for the bulls you use - 2yr old bulls should not weigh 1800-2000 lbs if you expect their daughters to be moderate. Form Follows Function!

Feeding big cows means big maintenance(feed) costs every year. Bigger weaning weights ideally will be achieved from using the benefits of hybrid vigour and Terminal Sires being mated to moderate cows. Keeping replacement heifers out of Terminal (growth) bulls that have never been selected for cowherd FERTILITY will steal your chance at optimizing profit, it results in reduced fertility and cow-herd frame size creep that costs you more to feed every year! Terminal-Maternal Cross-breeding systems are the most efficient way to produce beef cattle. Profitability falls by the way-side when chasing maximum production levels.

Our bulls are bred with generations of fleshing ability, fertility, capacity, correct feet, longevity and udder quality. Edie Creek bulls will sire calves that are born easily and nurse quickly.



They will establish an efficient, maternal "Cowherd Factory" from which you can then mate with terminal sires to add hybrid vigour performance and the "flavour of the day" in hide colour. Doing this will create a functional, long-living cowherd able to wean calves with maximum efficiency in your commercial ranch environment.

When you buy 2-year-old bulls from Edie Creek Angus, you get a carefully developed breeding bull. You can turn these Rugged 2-yr olds out and expect them to breed more cows than yearling bulls & come back in better shape. They are more durable and last under real-world breeding conditions. Longevity is as important in your Herd Bulls as it is in your cowherd! By developing them for an additional year it allows us to sort them in our pastures instead of yours.

Increasing the profitability of the commercial cattle producer is the focus of our breeding program.

We really enjoy talking about beef production, so please give us a call or stop by for a tour and we can talk about beef production systems, our breeding program, or any of the cattle for sale.

*Stefan Bown*





1

1		EDIE CREEK HUNTER 3K			
LOT		TATT00: ECA 3K DOB: February 09, 2022 REG#: 2350274			
BORN 1ST CYCLE?	Yes	O C C FOCUS 813F <b>O C C HUNTER 928H</b> O C C DIXIE ERICA 960E			
CALVING EASE	5	O C C GREAT PLAINS 943G <b>O C C DIXIE ERICA 606S</b> O C C DIXIE ERICA 612H			
UDDER	5	BASIN RAINMAKER 654X DIXIE ERICA OF C H 1019 O C C ANCHOR 771A DIXIE ERICA OF R R 4345 N BAR EMULATION EXT DIXIE ERICA OF C H 1019 D H D TRAVELER 6807 O C C DIXIE ERICA 803F			
FLESHING	5				
EPD'S		CED: 9.5	BW: -1.4	WW: 28	YW: 52
ACTUAL PERFORMANCE		BW: 72	DAM BW:	DAM WT: 1280	ADD: ET
		MILK: 20			

- Heifer Bull. One of the last of our Embryo matings of OCC Hunter & Dixie Erica 606S. 606S raised a dandy heifer calf for us again last year as a 17yr old. We have used a full brother to ECA 3K in the past and have two full sisters that are excellent fertile, feminine cows.
- 606S has had as big of an impact in our herd as any cow we have ever owned. If you are out in Alberta or NW Saskatchewan, you may have seen sons from a full brother (Edie Creek Hunter 2D) of this 3K bull sell in the Vee Tee Angus bull sale last spring.
- This bull is a neat breeding piece that could add maternal traits to any Purbred herd in the country, or go out and improve the longevity in a commercial herd. OCC Hunter 928H is a maternal brother to OCC Legacy 839L.



OCC Hunter 928H • Sire of Lot 1

2		EDIE CREEK FULL BORE 97K			
LOT		TATT00: ECA 97K DOB: May 06, 2022 REG#: 2302902			
BORN 1ST CYCLE?	Yes	EDIE CREEK FULL BORE 34F <b>EDIE CREEK FULL BORE 31H</b> EDIE CREEK DIXIE ERICA 71B			
CALVING EASE	5	O C C NIGHT WATCH 902N <b>MH FRANCES 620</b> MH FRANCES 433			
UDDER	5	COLE CREEK FULL BORE 730 O C C DIXIE ERICA 606S EDIE CREEK 839L 298 LEGACY 5Y CROWFOOT DIXIE ERICA 4895P O C C LINEBRED 661L O C C PRIMROSE 931L MH TITAN 752 MH FRANCES 022			
FLESHING	5				
EPD'S		CED:	BW: -1.8	WW: 38	YW: 65
ACTUAL PERFORMANCE		BW: 78	DAM BW:	DAM WT: 1185	ADD: 6
		MILK: 23			

- Masculine, good structured heifer bull. 97K has always been a standout.
- Pictured is his dam, MH Frances 620, who weaned off a 700lb bull calf in January of this year. She has been an excellent producer, with sons working at Doe River Colony, and in Fork River, MB. Her 2023 son 6L will be breeding here at Edie Creek Angus this summer.
- We consider the granddam MH Frances 433 to be an ideal Angus cow. We hope to start flushing her in the near future.



MH Frances 620 -Dam of Lot 2



2



LOT <b>3</b>		<b>EDIE CREEK FULL BORE 29K</b>	
TATT00: ECA 29K		DOB: April 27, 2022 REG#: 2289628	
BORN 1ST CYCLE?	Yes	EDIE CREEK FULL BORE 34F <b>EDIE CREEK FULL BORE 31H</b> EDIE CREEK DIXIE ERICA 71B	
CALVING EASE	5	MH TUBBY 56 <b>EDIE CREEK ELISEVA 56 127D</b> EDIE CREEK ELISEVA 119T	
UDDER	4	COLE CREEK FULL BORE 730 O C C DIXIE ERICA 606S EDIE CREEK 839L 298 LEGACY 5Y CROWFOOT DIXIE ERICA 4895P LODGE OF WYE M H MINA 836 O C C MOONSHINE 740M CROWFOOT ELISEVA 1783L	
FLESHING	5		

EPD'S	CED: 11	BW: -1.8	WW: 33	YW: 58	MILK: 23
ACTUAL PERFORMANCE	BW: 73	DAM BW: 82	DAM WT: 1210	ADD: 6	

- Heifer bull. 29K is built with extra rib capacity, and has what it takes to sire cows that are built to thrive in environments where grazing is a profit centre.
- This bull is a great example of what MH Tubby 56 brings to our pedigrees—added rib capacity and masculinity with low maintenance requirements.
- Eliseva cow family has been excellent. 127D unfortunately over-centred & died, but her dam and sister have been long lived, easy fleshing & beautifully feminine cows.



**3**

LOT <b>4</b>		<b>EDIE CREEK FULL BORE 151K</b>	
TATT00: ECA 151K		DOB: May 14, 2022 REG#: 2290192	
BORN 1ST CYCLE?	Yes	EDIE CREEK FULL BORE 34F <b>EDIE CREEK FULL BORE 31H</b> EDIE CREEK DIXIE ERICA 71B	
CALVING EASE	2	MH TUBBY 56 <b>EDIE CREEK 56 FLORA 118D</b> EDIE CREEK 4Y FLORA 76A	
UDDER	4	COLE CREEK FULL BORE 730 O C C DIXIE ERICA 606S EDIE CREEK 839L 298 LEGACY 5Y CROWFOOT DIXIE ERICA 4895P LODGE OF WYE M H MINA 836 O C C WORTHY MAN 967W EDIE CREEK ML830M FLORA 4Y	
FLESHING	4		

EPD'S	CED: 2	BW: 1.9	WW: 41	YW: 72	MILK: 19
ACTUAL PERFORMANCE	BW: 98	DAM BW: 75	DAM WT: 1230	ADD: 6	

- 3/4 brother to the lot 3 bull. But this time out of the Flora cow family. Great Granddam, 4Y, is an OCC Missing Link daughter who has had a high seller in 2019, and will give us her 12th calf this May. The dam of this bull has calved first cycle every year except once.
- We started our herd out with many different cow families, but its amazing how they have been whittled down to the ones that remain today. The strength of cow families is very important.
- Phenomenal list of sires in this guy's pedigree with OCC greats Legacy, Missing Link, Emblazon, Great Plains, and the Worthy Man bull who walked our pastures. Lodge of Wye and Cole Creek Full Bore close up in the pedigree too.

LOT <b>5</b>		<b>EDIE CREEK FULL BORE 177K</b>	
TATT00: ECA 177K		DOB: May 19, 2022 REG#: 2290196	
BORN 1ST CYCLE?	Yes	EDIE CREEK FULL BORE 34F <b>EDIE CREEK FULL BORE 31H</b> EDIE CREEK DIXIE ERICA 71B	
CALVING EASE	5	MH TITAN 752 <b>EDIE CREEK PRIDE 18D</b> CROWFOOT PRIDE 5893R	
UDDER	5	COLE CREEK FULL BORE 730 O C C DIXIE ERICA 606S EDIE CREEK 839L 298 LEGACY 5Y CROWFOOT DIXIE ERICA 4895P O C C GREAT PLAINS 943G MH MELISA 357 O C C MOONSHINE 740M CROWFOOT FORKS 723K	
FLESHING	4		

EPD'S	CED: 12	BW: -1.6	WW: 40	YW: 75	MILK: 20
ACTUAL PERFORMANCE	BW: 76	DAM BW: 71	DAM WT: 1225	ADD: 6	

- Heifer Bull. Granddam Crowfoot Pride 5839R holds the record here for calves weaned. She raised 20 calves naturally. Incredible. Pride 18D also has a daughter in our herd.
- You also find OCC Dixie Erica 606S in this pedigree, who raised a great calf last year as a 17yr old.



MH Titan 752 - Maternal Grandisre of Lot 5

LOT <b>6</b>		<b>EDIE CREEK GATE KEEPER 37K</b>	
TATT00: ECA 37K		DOB: April 28, 2022 REG#: 2301838	
BORN 1ST CYCLE?	Yes	O C C BLUEPRINT 632B <b>O C C GATE KEEPER 678G</b> O C C DIXIE ERICA 638D	
CALVING EASE	3	SHOSHONE SOLOMON 316 <b>MH FRANCES 661</b> MH FRANCES 014	
UDDER	5	O C C MODERATOR 825M O C C DIXIE ERICA 628W O C C GREAT PLAINS 943G O C C DIXIE ERICA 721Y SHOSHONE FRANK 6343 SHOSHONE FARNCES 6374 MH TYSON 769 MH FRANCES 667	
FLESHING	4		

EPD'S	CED: 7	BW: 1	WW: 28	YW: 49	MILK: 17
ACTUAL PERFORMANCE	BW: 84	DAM BW: 75	DAM WT: 1250	ADD: 6	

- This is a really stout son of OCC Gate Keeper that we were going to keep for ourselves, but he has a full brother born last spring that we will keep instead.
- Dam, Frances 661 is a Shoshone Solomon 316 daughter with possibly the best udder in our herd, and has had excellent calves every year. Many excellent Howrey Angus cattle back this pedigree. She also has calved first cycle every year.
- Lots of excellent udder structure potential wrapped up in this package—628W was one of the best uddered cows at OCC, Solomon 316 is an ace, and Great Plains and Tyson were udder fixers as well.



MH Frances 661 - Dam of Lot 6



**6**

**VIDEOS OF ALL THE SALE BULLS ARE AVAILABLE!**  
**PLEASE HEAD TO OUR WEBSITE: [www.EdieCreekAngus.com](http://www.EdieCreekAngus.com)**  
**FOR LINKS TO THE VIDEOS AND TEAM BIDDING INSTRUCTIONS**  
*If for some reason you are unable to attend the sale, please register to bid on TEAM Auctions (find instructions on page 12), or give us a call if you would like to be on the phone.*



## LOT 7 EDIE CREEK GATE KEEPER 109K

TATT00: ECA 109K DOB: May 08, 2022 REG#: 2301844

BORN 1ST CYCLE?	Yes	O C C BLUEPRINT 632B <b>O C C GATE KEEPER 678G</b> O C C DIXIE ERICA 638D	O C C MODERATOR 825M O C C DIXIE ERICA 628W O C C GREAT PLAINS 943G O C C DIXIE ERICA 721Y COLE CREEK CEDAR RIDGE 1V MH FRANCES 720 O C C EMBLAZON 854E SHOSHONE FRANCES 6357
CALVING EASE	4		
UDDER	4	MH <b>MH FRANCES 623</b>	
FLESHING	5	MH FRANCES 426	

EPD'S	CED: 10	BW: -0.1	WW: 30	YW: 53	MILK: 18
ACTUAL PERFORMANCE	BW: 82	DAM BW: 70	DAM WT: 1005	ADD: 6	

- This bull represents a lot of time and commitment pursuing maternal excellence. His sire comes from Ohlde Cattle Co in KS, where they've been breeding forage-efficient cattle for as long as anyone. His dam was one of the original heifers we purchased from Monte Howrey in 2017. Monte has been refining cows for 25+ years.
- We are really struggling with selling this bull. But we can't keep them all.
- You won't find another bull with Shoshone Frances 6357 this close up in the pedigree. She was a special cow that has been multiplied & linebred to with great success in our Howrey Angus cowherd in North Dakota. She produced until age 18 and had a perfect udder.



Shoshone Frances 6357



## LOT 8 EDIE CREEK GATE KEEPER 123K

TATT00: ECA 123K DOB: May 10, 2022 REG#: 2301845

BORN 1ST CYCLE?	Yes	O C C BLUEPRINT 632B <b>O C C GATE KEEPER 678G</b> O C C DIXIE ERICA 638D	O C C MODERATOR 825M O C C DIXIE ERICA 628W O C C GREAT PLAINS 943G O C C DIXIE ERICA 721Y DDA EMBLAZON 27C M H MINA 836 O C C HOMER 650H MH FRANCES 55
CALVING EASE	3.5		
UDDER	4	MH TYSON 769 <b>MH FRANCES 18</b>	
FLESHING	4.5	MH FRANCES 747	

EPD'S	CED: 10.5	BW: 0.7	WW: 22	YW: 43	MILK: 21
ACTUAL PERFORMANCE	BW: 82	DAM BW:	DAM WT: 1150	ADD: 11	

- We made a mistake and didn't get the Frances 18 cow flushed before she came up open this year as a 13yr old. Take a look at that picture and you can see why we regard her so highly. You will also see a picture of his Maternal sister - Frances 18G.
- We are keeping a 3/4 brother to this bull. We seriously contemplated keeping this bull and sending him down to our Howrey Angus herd in North Dakota. Although smaller in stature, he has a herdbull presence and the proven bloodlines to back it up!
- He will sire 1150-1250lb cows who are built to forage and work on their own. Our Frances cows are all very attentive mothers with above average udder quality. **Retaining 1st Right of Refusal to buy him when you are finished with him.**



Mh Frances 18 - Dam of Lot 8

## LOT 9 EDIE CREEK GATE KEEPER 179K

TATT00: ECA 179K DOB: May 19, 2022 REG#: 2301854

BORN 1ST CYCLE?	Yes	O C C BLUEPRINT 632B <b>O C C GATE KEEPER 678G</b> O C C DIXIE ERICA 638D	O C C MODERATOR 825M O C C DIXIE ERICA 628W O C C GREAT PLAINS 943G O C C DIXIE ERICA 721Y BALLOT OF BELLADRU OCTORARO GAMMER 203 COLE CREEK CEDAR RIDGE 1V MH FRANCES 720
CALVING EASE	3		
UDDER	4	OCTORARO BALLOT STO 6 <b>MH FRANCES 642</b>	
FLESHING	5	MH FRANCES 328	

EPD'S	CED:	BW: 0.5	WW: 28	YW: 53	MILK: 20
ACTUAL PERFORMANCE	BW:	DAM BW:	DAM WT: 1180	ADD: 6	

- Take a look at the picture of the maternal brother to ECA 179K. That bull was wintered with out any grain, just forages. We get a lot of enjoyment out of the success our bulls bring customers.
- There is another maternal brother to this bull working as a herd sire for Thoring Agriculture Inc. in Saskatchewan.
- This is a high quality bull that will prove him self out over time. You would not necessarily pick his dam out of the herd, but she is very sound, good uddered, and has lots of longevity behind her.



Frances 18G - Maternal Sister to Lot 8



Maternal brother to Lot 9

At Edie Creek Angus, we are focused on **BREEDING MATERNAL GENETICS** that are proven to fit a low-input environment and management practices based on **MAXIMIZING PROFIT PER ACRE OF GRASS.**





## DID YOU KNOW...

- Reproduction is the most important factor affecting profitability.
- Reproduction is 5X more important than growth rate, and 10X more important than carcass quality when it comes to profit.
- Every missed breeding cycle represents a 42 lb loss in weaning weight.
- Body Condition has the greatest impact on reproduction. ("Howrey Angus bulls will sire Easier Fleshing Cows that can hold Body Condition.").
- Thin cows are only half as productive as those in optimum condition.







Dam of Lot 10

10

LOT	10	RED EDIE CREEK EPIC 5K			
		TATTOO: ECA 5K	DOB: February 11, 2022	REG#: 2350275	
BORN 1ST CYCLE?	Yes	RED BECKTON EPIC K F075	RED BECKTON EPIC D404		
CALVING EASE	2.5	RED BECKTON EPIC R397 K	RED BECKTON BELGA D483 KR		
UDDER	4	RED BECKTON F468 JL	RED BECKTON JULIAN GG B571		
FLESHING	5	RED CROWFOOT RAMBLER 1038L	RED BECKTON KIT A517 NP		
		RED CROWFOOT LADY 6503S	RED VGW RAMBLER 1000		
		RED CROWFOOT LADY 1131L	CROWFOOT VERNICE 907J		
			RED FORSTER CHIEF 7182ET		
			RED CROWFOOT LADY 626F		
EPD'S		CED: 3	BW: 1	WW: 31	YW: 65
ACTUAL PERFORMANCE		BW: 89	DAM BW: 80	DAM WT: 1300	MILK: 26
					ADD: ET

- The dam of 5K was one of the best red cows to walk our pastures. Produced until age 16 with excellent daughters and sons alike. Moderate, good footed, great uddered, great temperament, she was a gem. Son Easy 31 D sold to Pharo Cattle Co producer in Wyoming, and had sons in their sale.
- Being a maternal-focused program, nearly every mating we plan is designed to create functional, profitable repeatable cows, so getting a bull calf is a disappointment for us and an opportunity for you! We are hoping that the next embryo calves from this matings are all females!
- Sire Epic R397K is an outcross from the Beckton herd, and is known for easy-fleshing, good footed daughters. MGS is the reliable Julian GG B571 bull. Keep the daughters of this bull.

LOT	11	RED EDIE CREEK GUNTHER 46K			
		TATTOO: ECA 46K	DOB: April 29, 2022	REG#: 2301884	
BORN 1ST CYCLE?	Yes	RED REDHILL P707 NEBULA 153Z	RED BECKTON NEBULA P P707		
CALVING EASE	5	RED OCC GUNTHER 624G	RED BUF CRK REDPRIDE P154		
UDDER	4	RED OCC VANESSA 604C	RED OCC RED GRAZER 610Z		
FLESHING	5	RED OCC EASY RED 868A	RED OCC VANESSA 829S		
		RED EDIE CREEK BIEBIRD 3F	RED OCC EASY RED MAF		
		RED EDIE CREEK BIEBIRD	RED OCC VANESSA 797Y		
			RED BANDURA DETOUR 59Y		
			CROWFOOT BIEBIRD 3080N		
EPD'S		CED: 13	BW: -3.4	WW: 33	YW: 59
ACTUAL PERFORMANCE		BW: 66	DAM BW: 71	DAM WT: 1435	MILK: 29
					ADD: 4

- Heifer bull. His Easy Red-sired dam is becoming one of our favourite cows due to her excellent feet & udder, and good disposition. Her son 132H sold to Ole Farms of Athabasca, AB in, 2022. ECA 3F has also calved first cycle every year.
- This bull started out small, but soon took shape as a future herd sire. OCC Gunther 624G is our newest Red Angus herd sire, and we are very pleased with his sons and daughters: structurally correct, good dispositions.
- Selling Half-Interest & Half Possession. See Terms & Conditions for details. Double your money to own him in full.
- Retaining 1st Right of Refusal to buy him when you are finished with him.



46K as a calf



11



LOT	12	RED EDIE CREEK GUNTHER 35K			
		TATT00: ECA 35K	DOB: April 28, 2022	REG#: 2301883	
BORN 1ST CYCLE?	Yes	RED REDHILL P707 NEBULA 153Z	RED BECKTON NEBULA P P707		
CALVING EASE	5	RED OCC GUNTHER 624G	RED BUF CRK REDPRIDE P154		
UDDER	3.5	RED OCC VANESSA 604C	RED OCC RED GRAZER 610Z		
FLESHING	5	RED OCC EASY RED 868A	RED OCC VANESSA 829S		
		RED EDIE CREEK LADY 120E	RED OCC EASY RED MAF		
		RED CROWFOOT LADY 6503S	RED OCC VANESSA 797Y		
			RED CROWFOOT RAMBLER 1038L		
			RED CROWFOOT LADY 1131L		

EPD'S	CED: 11	BW: -2.8	WW: 20	YW: 44	MILK: 28
ACTUAL PERFORMANCE	BW: 68	DAM BW: 80	DAM WT: 1280	ADD: 5	

- Heifer bull. He has been a standout since he was young, and has a herd bull presence already, and excellent rib and hindquarter development.
- His Easy Red-sired dam is Jonathan's favourite Red Angus cow, the best daughter of our 6503S foundation cow. ECA 120E has calved first cycle every year.
- **Selling Half-Interest & Half Possession. See Terms & Conditions for details. Double your money to own him in full.**



LOT	13	RED EDIE CREEK GUNTHER 91K			
		TATT00: ECA 91K	DOB: May 05, 2022	REG#: 2350273	
BORN 1ST CYCLE?	Yes	RED REDHILL P707 NEBULA 153Z	RED BECKTON NEBULA P P707		
CALVING EASE	5	RED OCC GUNTHER 624G	RED BUF CRK REDPRIDE P154		
UDDER	4	RED OCC VANESSA 604C	RED OCC RED GRAZER 610Z		
FLESHING	4	RED OCC EASY RED 868A	RED OCC VANESSA 829S		
		RED EDIE CREEK DUCHESS 101E	RED OCC EASY RED MAF		
		RED EDIE CREEK DUCHESS 80B	RED OCC VANESSA 797Y		
			RED EDIE CRK NORSEMAN KING 91T		
			RED EDIE CRK CLRDO DUCHESS 29X		

EPD'S	CED: 15	BW: -4.3	WW: 23	YW: 47	MILK: 27
ACTUAL PERFORMANCE	BW: 68	DAM BW: 64	DAM WT: 1320	ADD: 5	

- Heifer Bull. Excellent footed bull.
- Dam is an easy-fleshing, good footed Easy Red daughter with a good udder.

LOT	14	RED EDIE CREEK GUNTHER 100K			
		TATT00: ECA 100K	DOB: May 07, 2022	REG#: 2301892	
BORN 1ST CYCLE?	Yes	RED REDHILL P707 NEBULA 153Z	RED BECKTON NEBULA P P707		
CALVING EASE	3.5	RED OCC GUNTHER 624G	RED BUF CRK REDPRIDE P154		
UDDER	4	RED OCC VANESSA 604C	RED OCC RED GRAZER 610Z		
FLESHING	4	RED PCC COLORADO HOB0	RED OCC VANESSA 829S		
		RED EDIE CREEK MRS BC HOB0 35C	RED BUF CRK HOB0 1961		
		RED RIDGE SIDE MRS BC HOB0 13A	RED RKJ HERO 433 804		
			RED BUF CRK HOB0 1961		
			RED RIDGE SIDE LUCY 13R		

EPD'S	CED: 6	BW: -0.6	WW: 35	YW: 66	MILK: 24
ACTUAL PERFORMANCE	BW: 87	DAM BW: 80	DAM WT: 1200	ADD: 7	

- Attractive bull that is line bred to the Red PCC Colorado Hobo bull, and comes from a productive Cow family.
- The maternal Grand dam of this bull has been a steady producer with 11 calves to date. With all of them coming in the first cycle.

LOT	15	RED EDIE CREEK GUNTHER 145K			
		TATT00: ECA 145K	DOB: May 12, 2022	REG#: 2301897	
BORN 1ST CYCLE?	Yes	RED REDHILL P707 NEBULA 153Z	RED BECKTON NEBULA P P707		
CALVING EASE	5	RED OCC GUNTHER 624G	RED BUF CRK REDPRIDE P154		
UDDER	4	RED OCC VANESSA 604C	RED OCC RED GRAZER 610Z		
FLESHING	4	RED OCC EASY RED 868A	RED OCC VANESSA 829S		
		RED EDIE CREEK BIEBIRD 59G	RED OCC EASY RED MAF		
		RED EDIE CREEK BIEBIRD	RED OCC VANESSA 797Y		
			RED BANDURA DETOUR 59Y		
			CROWFOOT BIEBIRD 3080N		

EPD'S	CED: 12	BW: -3	WW: 21	YW: 44	MILK: 25
ACTUAL PERFORMANCE	BW: 68	DAM BW: 68	DAM WT: 1150	ADD: 3	

- Heifer Bull. Full brother in blood to the Lot 11 bull: dam is an Easy Red daughter out of the same 103B cow.
- The pelvic structure of the sire 624G is very correct and this bull's daughters should be structurally sound maternal cows that work in a forage environment.

**team**

## REGISTER TO BID

Preferred browser: Google Chrome

- 1 CREATE YOUR ACCOUNT**  
Click "Create Account" in the top right hand corner!
- 2 FILL IN YOUR INFORMATION**  
Fill in your First Name, Last Name, Username, Password and Email address to complete the form, then hit "create account" at the bottom of the page. Alternatively sign in using your Facebook or Google account.
- 3 APPROVE YOUR EMAIL**  
Check your email for an email from "Team Auction Sales" to approve your account. Make sure to check your junk folder if you don't see it in your inbox.
- 4 CONFIRM YOUR EMAIL ADDRESS**  
Click on "confirm your email address" to activate your account.
- 5 GET APPROVED TO BID**  
Go to the auction you want to register for and click "Get approved to bid".
- 6 FILL IN YOUR BILLING INFORMATION**  
Fill out the billing information and click "confirm your information" at the bottom. You will then be registered for all upcoming auctions. You can edit your billing information any time by clicking on "bidding account" in the menu bar.

**NEED ASSISTANCE?**  
PLEASE CALL OUR DEDICATED TECH SUPPORT LINE AT 1-888-315-0122 IF YOU NEED ASSISTANCE AT ANY TIME CREATING YOUR ACCOUNT OR USING OUR NEW WEBSITE





LOT 16		EDIE CREEK EQUINOX 21K				
		TATTOO: ECA 21K	DOB: April 23, 2022	REG#: 2302852		
BORN 1ST CYCLE?	Yes	LOYNING EQUINOX 7 <b>LOYNING 7 EQUINOX 0009</b> LOYNING ESTER 7008				
CALVING EASE	4	HORSE BUTTE 6141 OF 3141 JAD ESTER 3750 PAPA FORTE 1921 DMF M1F HBR SHOSHONE ESTER 7133 O C C LEGACY 839L CROWFOOT ROSE LEE 5823R CANE RIDGE CHALLENGER 2334 CROWFOOT DIXIE ERICA 2629M				
UDDER	4	EDIE CREEK 839L 298 LEGACY 5Y <b>EDIE CREEK DIXIE ERICA 71B</b> CROWFOOT DIXIE ERICA 4895P				
FLESHING	4					
EPD'S		CED: 9	BW: 0.3	WW: 42	YW: 74	MILK: 26
ACTUAL PERFORMANCE		BW: 81	DAM BW: 56	DAM WT: 1245		ADD: 8

- ECA 21K is a neat package. His dam is an easy fleshing, wedge shaped cow, who is designated as elite (consistently raises above average calves). 21K is a maternal brother to our Herd bull ECA 31H - who has many great sons in this sale. We used 21K in a mob of breeding bulls last summer.
- Equinox 21K has more size and growth to him than most of our bulls. This came from his sire, who is a bigger framed bull. All our Equinox 0009 calves had above-average growth from birth to weaning, acting almost like a hybrid vigour-esque line cross in our herd.



Dam of Lot 16



LOT 17		EDIE CREEK EQUINOX 24K				
		TATTOO: ECA 24K	DOB: April 24, 2022	REG#: 2302853		
BORN 1ST CYCLE?	Yes	LOYNING EQUINOX 7 <b>LOYNING 7 EQUINOX 0009</b> LOYNING ESTER 7008				
CALVING EASE	3	HORSE BUTTE 6141 OF 3141 JAD ESTER 3750 PAPA FORTE 1921 DMF M1F HBR SHOSHONE ESTER 7133 LODGE OF WYE M H MINA 836 O C C LEGACY 839L EDIE CREEK CAROLINE 10M				
UDDER	5	MH TUBBY 56 <b>EDIE CREEK 56 CAROLINE 88C</b> EDIE CREEK 839L CAROLINE 48W				
FLESHING	4					
EPD'S		CED: 5	BW: 0.9	WW: 43	YW: 73	MILK: 22
ACTUAL PERFORMANCE		BW: 76	DAM BW: 90	DAM WT: 1270		AOD: 7

- His dam has a perfect udder, and is a beautiful Tubby daughter. Tubby daughters are among our all time favourites. They have great rib capacity, correct structure, and qualities that aren't measured by EPD's such as hormonal balance, shiny haircoats, and excellent hard, black feet.
- Dam of this bull has calved first cycle every year. Fertility is so important.



LOT		18		EDIE CREEK EQUINOX 92K		TATT00: ECA 92K		DOB: May 06, 2022		REG#: 2302856	
BORN 1ST CYCLE?		Yes		LOYNING EQUINOX 7 LOYNING 7 EQUINOX 0009 LOYNING ESTER 7008		HORSE BUTTE 6141 OF 3141 JAD ESTER 3750 PAPA FORTE 1921 DMF M1F HBR SHOSHONE ESTER 7133 O C C GREAT PLAINS 943G O C C JUANADA 737L O C C WORTHY MAN 967W LENI OOK FLORA 26J					
CALVING EASE		2		EDIE CREEK GREAT ONE 79Y EDIE CREEK FLORA 1B EDIE CREEK 38J FLORA 75Z							
UDDER		4.5									
FLESHING		3									

EPD'S	CED: 3	BW: 1.3	WW: 42	YW: 73	MILK: 24
ACTUAL PERFORMANCE	BW: 92	DAM BW: 62	DAM WT: 1325	AOD: 8	

- ECA 1B is the perfect cow. Never needs any attention, very intelligent, perfect feet & udder, and raises solid calves. She is going to be 10yrs old this year, and she doesn't look much older than a 5yr old cow.
- This bull will add length and feminine fronted females. He will also improve fertility. His dam has calved 1st cycle every year.
- Longtime customer Black Rose Ranch of Beausejour has 2 different sons of hers, and she has an excellent OCC Legacy son working at Archie Creek Ranching at Winnipegosis, MB. Two daughters also retained in-herd.



Dam of Lot 18

LOT		19		EDIE CREEK EQUINOX 113K		TATTOO: ECA 113K		DOB: May 08, 2022		REG#: 2302858	
BORN 1ST CYCLE?		Yes		LOYNING EQUINOX 7		HORSE BUTTE 6141 OF 3141 JAD ESTER 3750 PAPA FORTE 1921 DMF M1F HBR SHOSHONE ESTER 7133 O C C GREAT PLAINS 943G O C C JUANADA 737L O C C LEGACY 839L O C C KAREN 759N					
CALVING EASE		2		LOYNING 7 EQUINOX 0009							
				LOYNING ESTER 7008							
UDDER		3.5		EDIE CREEK GREAT ONE 79Y							
FLESHING		3		EDIE CREEK KAREN 15B							
				EDIE CREEK KAREN 25Z							

EPD'S	CED: 2	BW: 2	WW: 42	YW: 71	MILK: 22
ACTUAL PERFORMANCE	BW: 92	DAM BW: 82	DAM WT: 1425	AOD: 8	

- 3/4 brother to ECA 92K. And again out of a cow that will be 10yrs old this year. Pedigree goes back to a pathfinder OCC Eureka daughter that we brought up from Tim Ohlde in Kansas.
- Little more frame size to these Equinox sons. We expect their paternal sisters to mature into 1350lb cows.
- The dam of this bull has calved first cycle every year. Fertility is 5X more important than growth rate when it comes to the size of the cheque that comes home when we sell calves.



20

LOT	20	EDIE CREEK GREAT ONE 81K			
		TATT00: ECA 81K	DOB: May 04, 2022	REG#: 2303695	
BORN 1ST CYCLE?	Yes	EDIE CREEK GREAT ONE 79Y EDIE CREEK GREAT ONE 77F CH GEORGINA 626		O C C GREAT PLAINS 943G O C C JUANADA 737L O MR BANJO 41 147 LOGO CH GEORGINA 369 O C C GREAT PLAINS 943G MH MELISA 357 O C C GREAT PLAINS 943G O C C JUANADA 737L	
CALVING EASE	4.5	MH TITAN 752 EDIE CREEK JUANADA 137G EDIE CREEK JUANADA 737L 62Y			
UDDER	5				
FLESHING	5				

EPD'S	CED: 8	BW: -0.6	WW: 38	YW: 61	MILK: 20
ACTUAL PERFORMANCE	BW: 78	DAM BW: 67	DAM WT: 1120	AOD: 3	

- Heifer bull. This bull is royally bred. If you have a chance, take a look at this bulls pedigree online. Its a neat deal. 3x OCC Great Plains. 2x OCC Juanada 737L. He is the result of half sib matings. 81K has the genetic consistency to prepotently increase the profitability of a cow herd.
- Juanada 62Y was a full sister to our Great One 79Y bull. And that deal is good footed, good uddered, and plenty fertile. The dam of this bull has calved 1st cycle every year so far in her young career.
- We have been very tempted to keep this bull, but we have a half brother out of the 606S cow that we are using to represent this gene pool.
- Retaining 1st Right of Refusal to buy him when you are finished with him.**



OCC Great Plains 943G

LOT	21	EDIE CREEK GREAT ONE 124K			
		TATTOO: ECA 124K	DOB: May 10, 2022	REG#: 2303675	
BORN 1ST CYCLE?	Yes	EDIE CREEK GREAT ONE 79Y EDIE CREEK GREAT ONE 77F CH GEORGINA 626	O C C GREAT PLAINS 943G O C C JUANADA 737L O MR BANJO 41 147 LOGO CH GEORGINA 369 O C C BIG TIME 746Z O C C DIXIE ERICA 693N EDIE CREEK 839L 298 LEGACY 5Y CROWFOOT DIXIE ERICA 4895P		
CALVING EASE	4				
UDDER	5	EDIE CREEK BIG TIME 848C EDIE CREEK DIXIE ERICA 13G EDIE CREEK DIXIE ERICA 71B			
FLESHING	4				

EPD'S	CED: 7	BW: 0.1	WW: 40	YW: 67	MILK: 21
ACTUAL PERFORMANCE	BW: 75	DAM BW: 68	DAM WT: 1085	AOD: 3	

- This bull will fix udders. He has an attractive build, and should cover lots of cows. Sire Great One 77F covered 50 2-4yr old cows in the terrible drought year of 2021, and had our best breed up ever, 97%.
- His dam is a maternal sister to our Herd sire Edie Creek Full Bore 31H. Dixie Erica 71B is an elite dam.
- ECA 13G raised twins as a heifer in the second cycle, and then has bred up and calved first cycle ever since.

LOT	22	EDIE CREEK GREAT ONE 185K			
		TATTOO: ECA 185K	DOB: May 21, 2022	REG#: 2349806	
BORN 1ST CYCLE?	No	EDIE CREEK GREAT ONE 79Y EDIE CREEK GREAT ONE 77F CH GEORGINA 626		O C C GREAT PLAINS 943G O C C JUANADA 737L O MR BANJO 41 147 LOGO CH GEORGINA 369 O C C GREAT PLAINS 943G MH MELISA 357 SHOSHONE FERRALL 6340 M H MINA 836	
CALVING EASE	2	MH TITAN 752 EDIE CREEK MINA 43G MH MINA 609			
UDDER	5				
FLESHING	4				

EPD'S	CED: 5.5	BW: 1.5	WW: 34	YW: 63	MILK: 17
ACTUAL PERFORMANCE	BW: 90	DAM BW: 87	DAM WT: 1350	AOD: 3	

- Another nice 77F son here, with deep maternal lineage backing him up. Maternal granddam was one of the most beautiful cows to walk our pastures, with great sons and daughters to her credit.
- Dam 43G is a full sister to the beautiful MH Mina 029 cow that we wish we had bought from Monte! 43G has also calved 1st cycle every year so far in her young career.



MH Mina 029



LOT	23	EDIE CREEK GREAT ONE 170K	TATT00: ECA 170K	DOB: May 17, 2022	REG#:
BORN 1ST CYCLE?	Yes	EDIE CREEK GREAT ONE 79Y <b>EDIE CREEK GREAT ONE 77F</b> CH GEORGINA 626	O C C GREAT PLAINS 943G O C C JUANADA 737L O MR BANJO 41 147 LOGO CH GEORGINA 369 O C C GREAT PLAINS 943G MH MELISA 357 SHOSHONE FRANZ 419 MH MINA 392		
CALVING EASE	4				
UDDER	4	MH TITAN 752 <b>EDIE CREEK MINA 54G</b> MH MINA 639			
FLESHING	3.5				

EPD'S	CED:	BW:	WW:	YW:	MILK:
ACTUAL PERFORMANCE	BW: 66	DAM BW:	DAM WT: 1300		ADD: 3

- Unregistered bull. But he is sire verified to 77F. The daughters of the 77F bull have some of the best udders that we've ever seen.
- Dam is a very nice Titan daughter out of a nice Shoshone-type female, Mina 639. We were unable to get her sire Franz 419 registered in the Canadian Angus Assoc.

LOT	24	EDIE CREEK GREAT ONE 160K	TATT00: ECA 160K	DOB: May 16, 2022	REG#: 2301836
BORN 1ST CYCLE?	Yes	EDIE CREEK GREAT ONE 79Y <b>EDIE CREEK GREAT ONE 77F</b> CH GEORGINA 626	O C C GREAT PLAINS 943G O C C JUANADA 737L O MR BANJO 41 147 LOGO CH GEORGINA 369 O C C GREAT PLAINS 943G MH MELISA 357 MH MELISA 357		
CALVING EASE	4.5				
UDDER	5	MH TITAN 752 <b>EDIE CREEK TITAN 8G</b> MH MELISA 509			
FLESHING	3				

EPD'S	CED: 9	BW: -1.2	WW: 27	YW: 49	MILK: 16
ACTUAL PERFORMANCE	BW: 77	DAM BW: 66	DAM WT: 1070		ADD: 3

- Heifer Bull. Linebred to OCC Great Plains 3X, and double bred to the dam of Titan: MH Melisa 357, the pathfinder OCC Homer daughter.
- Granddam Melisa 509 sold the excellent lot 2 bull in last year's sale, and also has a son working in our Howrey Angus herd in Sterling, ND.

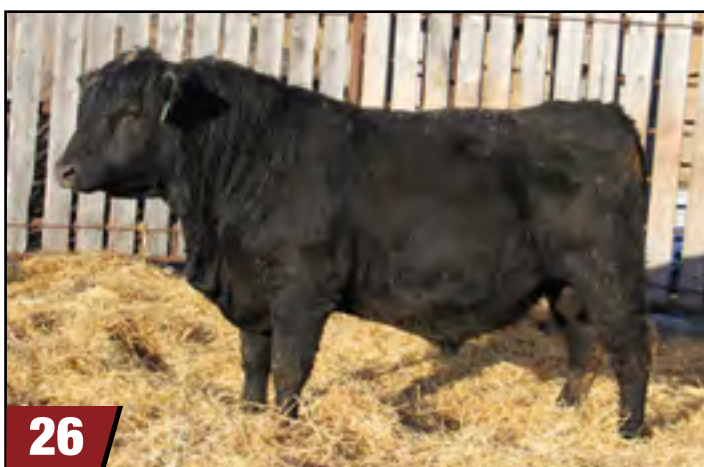
LOT	25	EDIE CREEK GREAT ONE 165K	TATT00: ECA 165K	DOB: May 16, 2022	REG#: 2303704
BORN 1ST CYCLE?	Yes	EDIE CREEK GREAT ONE 79Y <b>EDIE CREEK GREAT ONE 77F</b> CH GEORGINA 626	O C C GREAT PLAINS 943G O C C JUANADA 737L O MR BANJO 41 147 LOGO CH GEORGINA 369 O C C SENTINEL 714S O C C DIXIE ERICA 859T CROWFOOT MACHO 4549P CROWFOOT KAWICH 1758L		
CALVING EASE	2				
UDDER	3	O C C WORTHY MAN 967W <b>EDIE CREEK 967W ERICA 24D</b> CROWFOOT VALLEY CJ ERICA 7723T			
FLESHING	4				

EPD'S	CED: 3	BW: 1	WW: 35	YW: 63	MILK: 18
ACTUAL PERFORMANCE	BW: 89	DAM BW: 71	DAM WT: 1300		ADD: 6

- Erica 24D is a very easy fleshing cow. She is also very long. Her udder is tipped: her back quarters are lower than we'd like, which is why the lower udder rating. ECA 24D has calved first cycle every year except once.
- Granddam 7723T was a special cow here: she only had a couple of daughters in her career at Edie Creek, but she produced until she was 14, including some top sons like Big Time 53F whom we co-own with Reed Rigney of Westlock, AB.



MH Melisa 357 • Maternal Great Granddam of Lot 24



LOT	26	EDIE CREEK FULL BORE 204K	TATT00: ECA 204K	DOB: June 02, 2022	REG#: 2290202
BORN 1ST CYCLE?	No	NCC FULL BORE 629 <b>EDIE CREEK FULL BORE 57H</b> EDIE CREEK ERICA 99C	COLE CREEK FULL BORE 730 NCC JUANADA 2025 EDIE CREEK EMBLAZON 87Y CROWFOOT VALLEY CJ ERICA 7723T O C C HEADLINER 661H O C C DIXIE ERICA 946K HILLFIRE LEGACY 518R LENLOOK ERELITE 37L		
CALVING EASE	2				
UDDER	4	O C C MISSING LINK 830M <b>EDIE CREEK 80U ERELITE 3A</b> EDIE CREEK ERELITE 80U			
FLESHING	5				

EPD'S	CED: 2	BW: 2.3	WW: 47	YW: 82	MILK: 24
ACTUAL PERFORMANCE	BW: 90	DAM BW: 78	DAM WT: 1265		ADD: 9

- Dam ECA 3A will calve this year as an 11yr old. She is a good Missing Link daughter from a Hillfire Legacy dam who was a productive cow here.
- This bull is deep ribbed, stout, and will sire above average performance compared to a typical Edie Creek bull.
- Paternal granddam is the 7723T cow who retired at age 14.

**GENETIC CONSISTENCY DERIVED FROM RELIABLE COW FAMILIES AND THE USE OF LINEBREEDING TO REDUCE THE VARIABILITY IN OUR GENETIC POOL.**



LOT	27	EDIE CREEK FULL BORE 167K
	TATT00: ECA 167K	DOB: May 16, 2022 REG#: 2290194
BORN 1ST CYCLE?	Yes	NCC FULL BORE 629 <b>EDIE CREEK FULL BORE 57H</b> EDIE CREEK ERICA 99C
CALVING EASE	2.5	
UDDER	5	MH TITAN 752 <b>EDIE CREEK CAROLINE 13E</b> EDIE CREEK CAROLINE 61Z
FLESHING	5	

EPD'S	CED: 6	BW: 1	WW: 38	YW: 67	MILK: 23
ACTUAL PERFORMANCE	BW: 84	DAM BW: 83	DAM WT: 1260	ADD: 5	

- Here is another 5 star udder and 5 star fleshing bull. Sire 57H has as much rib and capacity as any bull we have raised.
- The Caroline cow family has a reputation for longevity and good udder structure here, and his dam 13E is a Titan daughter, which will improve udder structure even more.
- Great Granddam Caroline 10M had 15 natural calves here at ECA!



Sire of Lot 26, 27 and 28

LOT	28	EDIE CREEK FULL BORE 52K
	TATT00: ECA 52K	DOB: April 30, 2022 REG#: 2289798
BORN 1ST CYCLE?	Yes	NCC FULL BORE 629 <b>EDIE CREEK FULL BORE 57H</b> EDIE CREEK ERICA 99C
CALVING EASE	3	
UDDER	5	EDIE CREEK GREAT ONE 79Y <b>EDIE CREEK LADY ERICA 99E</b> EDIE CREEK 38U LADY ERICA 17A
FLESHING	5	

EPD'S	CED: 8	BW: 0.1	WW: 41	YW: 68	MILK: 26
ACTUAL PERFORMANCE	BW: 83	DAM BW: 70	DAM WT: 1165	ADD: 5	

- 5 star udder and 5 star fleshing. Sire Full Bore 57H was sold as the lot 1 bull in our, 2022 Bull Sale to Sirett Ranching of Lashburn, SK.
- Dam 99E has calved 1st cycle every year except for the year before 52K was born, but moved back up to 1st cycle for him. Fertility? No problem. Longevity? Her great granddam retired at age 18, and her granddam at age 14.

LOT	29	EDIE CREEK GATE KEEPER 161K
	TATT00: ECA 161K	DOB: May 16, 2022 REG#: 2301852
BORN 1ST CYCLE?	Yes	O C C BLUEPRINT 632B <b>O C C GATE KEEPER 678G</b> O C C DIXIE ERICA 638D
CALVING EASE	2.5	
UDDER	4	HILLFIRE LEGACY 518R <b>EDIE CREEK ALLICE 21Z</b> EDIE CREEK ALLICE 21P
FLESHING	5	

EPD'S	CED: 6	BW: 2.1	WW: 37	YW: 70	MILK: 22
ACTUAL PERFORMANCE	BW: 91	DAM BW: 69	DAM WT: 1300	ADD: 10	

- Gate Keeper 678G is a bull we have high hopes for, with a balanced pedigree to represent all the important maternal traits, and an excellent disposition. We haven't had a bull that likes to be scratched as much as Gate Keeper does since MH Titan walked our pastures!
- The dam of Lot 29 raised her last calf as an 11 year old. She was very good footed and easy fleshing, built for a long career as a profitable cow. She calved 1st cycle every year except for her first calving.
- This bull is built like an Athlete and will breed a lot of cows. A full brother to his dam bred cows for nearly 10yrs and was breeding 70/cows/year.



LOT	30	EDIE CREEK GATE KEEPER 49K
	TATT00: ECA 49K	DOB: April 30, 2022 REG#: 2304411
BORN 1ST CYCLE?	Yes	O C C BLUEPRINT 632B <b>O C C GATE KEEPER 678G</b> O C C DIXIE ERICA 638D
CALVING EASE	3	
UDDER	4	O C C WORTHY MAN 967W <b>EDIE CREEK KAREN 147E</b> EDIE CREEK KAREN 25Z
FLESHING	5	

EPD'S	CED: 6	BW: 0.9	WW: 33	YW: 64	MILK: 19
ACTUAL PERFORMANCE	BW: 84	DAM BW: 81	DAM WT: 1425	ADD: 5	

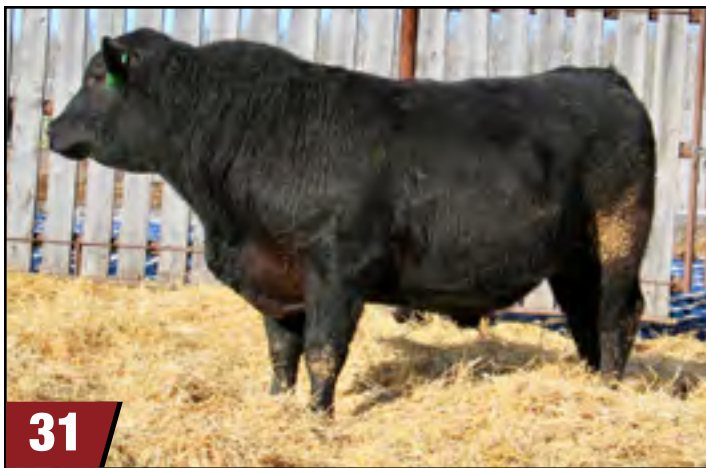
- 49K probably has the easiest fleshing pedigree in the sale. So if that is something that you are looking to improve take a look.
- His dam is a full sister to a past high seller that went to Black Rose Ranch for \$9,000. The weight of his dam doesn't come from much extra frame, but she always carried some extra insulation.
- Pedigree goes back to a Pathfinder OCC Eureka cow that we imported from Ohlde Cattle Co. In Kansas. OCC Pedigree through & through here, if you're looking to add Fleshing ability

"Too many people view milk as a maternal trait. I view it as "anti-maternal." "Maternal" is fertility, maternal calving ease, good mothering instinct and survivability. The rancher who develops good cows adapted to a low-input environment, sized right with moderate milking ability and with good hybrid vigor will soon have a high percentage of his/her cows calving in the first 30 days of calving. This rancher can sell a few cows to the rancher who wants to buy replacements, use a terminal cross bull and sell all the calves."

- Burke Teichert

**OPTIMIZATION TO YOUR ENVIRONMENT IS A KEY TO PROFITABILITY.**





### LOT 31 EDIE CREEK GATE KEEPER 146K

TATT00: ECA 146K DOB: May 13, 2022 REG#: 2301848

BORN 1ST CYCLE?	Yes	O C C BLUEPRINT 632B <b>O C C GATE KEEPER 678G</b> O C C DIXIE ERICA 638D	O C C MODERATOR 825M O C C DIXIE ERICA 628W O C C GREAT PLAINS 943G O C C DIXIE ERICA 721Y SHOSHONE FRANK 6343 SHOSHONE FARNES 6374 M C C MULE CREEK 805 MH POLLY 719
CALVING EASE	2		
UDDER	5	SHOSHONE SOLOMON 316 <b>MH POLLY 628</b> MH POLLY 011	
FLESHING	4		

EPD'S	CED: 1.8	BW: 1.8	WW: 35	YW: 62	MILK: 20
ACTUAL PERFORMANCE	BW: 88	DAM BW: 88	DAM WT: 1600	ADD: 6	

- This bull should be a serious udder improver. Shoshone Solomon 316 has fixed udders probably as good as any bull we have every seen. MH Polly 628 has a perfect udder & has calved first cycle every year.
- 146K is a long, thick bull with great masculine character. He was almost selected to breed in the Edie Creek cowherd last summer. Gate Keeper really moderated the size of his dam, but he kept the thickness of both of them.
- Granddam MH Polly 011 worked until age 13 at the Howrey Angus herd in North Dakota.

### LOT 33 RED EDIE CREEK EASY RED 22K

TATT00: ECA 22K DOB: April 24, 2022 REG#: 2289620

BORN 1ST CYCLE?	Yes	RED OCC EASY RED MAF <b>RED OCC EASY RED 868A</b> RED OCC VANESSA 797Y	RED OCC LINEBRED 801R RED OCC VANESSA 829S RED OCC RED ROCK 864U RED OCC VANESSA 929T RED BECKTON NEBULA P P707 RED CALVO ROSE 8Z RED EDIE CRK NORSEMAN KING 91T RED RIDGE SIDE LUCY 13R
CALVING EASE	5		
UDDER	3	RED CALVO NEBULA 67C <b>RED EDIE CREEK LUCY 24G</b> RED EDIE CREEK LUCY 54C	
FLESHING	5		

EPD'S	CED: 11	BW: 2.6	WW: 31	YW: 62	MILK: 29
ACTUAL PERFORMANCE	BW: 72	DAM BW: 76	DAM WT: 1325	ADD: 3	

- Heifer Bull. He is more than 3/4 brother to the previous bull, but with a shot of Calvo Nebula 67C in there to add a bit of calving ease. Goes back to the same Elite granddam, 13R.
- Another strength will be foot quality. Easy Red cattle have consistently had excellent foot conformation.
- OCC Easy Red 868A was a game changer for our Red Angus breeding program. If you like cows that are moderate, big ribbed and easy fleshing, buy this bull.

### LOT 32 RED EDIE CREEK EASY RED 42K

TATT00: ECA 42K DOB: April 29, 2022 REG#: 2289796

BORN 1ST CYCLE?	Yes	RED OCC EASY RED MAF <b>RED OCC EASY RED 868A</b> RED OCC VANESSA 797Y	RED OCC LINEBRED 801R RED OCC VANESSA 829S RED OCC RED ROCK 864U RED OCC VANESSA 929T RED 5L NORSEMAN KING 2291 CROWFOOT ENCHANTRESS 4091P RED CIRCLE C MARIAS 14K RED RIDGE SIDE BARB 135M
CALVING EASE	2		
UDDER	3	RED EDIE CRK NORSEMAN KING 91T <b>RED EDIE CREEK LUCY 18B</b> RED RIDGE SIDE LUCY 13R	
FLESHING	5		

EPD'S	CED: 0	BW: 2.2	WW: 40	YW: 76	MILK: 30
ACTUAL PERFORMANCE	BW: 99	DAM BW: 91	DAM WT: 1300	ADD: 8	

- Great chance here to pick up a son or two of the legendary OCC Easy Red 868A bull that had such a big impact on the Red Angus herd here at Edie Creek.
- Big strong cow bull, one of the heaviest bulls in the sale. He has the classic look of the Easy Red sons. Lyle Cook of Moosehorn, MB bought his full brother in 2020.
- His 10 year old dam has calved first cycle every year except once, and is going strong. Granddam 13R was Sire of Lot 32 an elite dam.



## FERTILITY DRIVES PROFITABILITY

85% of the bulls this sale bulls were born in the first cycle!

*Keeping replacement heifers out of Terminal (growth) bulls that have never been selected for cowherd FERTILITY will steal your chance at optimizing profit—Profitability falls by the way-side when chasing maximum production levels.*

"I met the Bouw family about 10 years ago when they came to look at some of our cattle we had brought up from Monte Howrey in South Dakota. They were very keen and seemed to have a vision for the type of cattle they wanted to breed. Looking at their herd now, I don't think they have lost their vision. With these types of genetics to build the right kind of cow, we can scale our operations without a lot of extra labour and overheads. The result is profit with a good quality of life."

- Gary Richards, Bangor, SK



LOT	34	RED EDIE CREEK GUNTHER 94K
	TATT00: ECA 94K	DOB: May 06, 2022 REG#: 2301891
BORN 1ST CYCLE?	Yes	RED REDHILL P707 NEBULA 153Z <b>RED OCC GUNTHER 624G</b> RED OCC VANESSA 604C
CALVING EASE	3	
UDDER	3.5	RED BANDURA DETOUR 59Y <b>RED EDIE CREEK BIEBIRD</b> CROWFOOT BIEBIRD 3080N
FLESHING	4.5	RED BECKTON NEBULA P P707 RED BUF CRK REDPRIDE P154 RED OCC RED GRAZER 610Z RED OCC VANESSA 829S RED LAZY MC CC DETOUR 2W RED MISS JORD MABEL 41W O C C JOKER 620J RED CROWFOOT BIEBIRD 9196J

EPD'S	CED: 6	BW: -0.2	WW: 31	YW: 55	MILK: 25
ACTUAL PERFORMANCE	BW: 78	DAM BW: 91	DAM WT: 1470	AOD: 8	

- Getting back into the group of excellent OCC Gunther 624G sons, this 94K bull has a real herd bull presence.
- 94K's dam 103B is actually an OCC Joker 620J granddaughter, and she carries extra rib and fleshing ability as well as excellent foot quality as a result of that outcross to the OCC herd. OCC Hunter 928H also shows up in her pedigree.



LOT	35	RED EDIE CREEK GUNTHER 163K
	TATT00: ECA 163K	DOB: May 16, 2022 REG#: 2301899
BORN 1ST CYCLE?	Yes	RED REDHILL P707 NEBULA 153Z <b>RED OCC GUNTHER 624G</b> RED OCC VANESSA 604C
CALVING EASE	4	
UDDER	3.5	RED OCC EASY RED 868A <b>RED EDIE CREEK ROSE 8E</b> RED EDIE CREEK ROSE 121C
FLESHING	4	RED BECKTON NEBULA P P707 RED BUF CRK REDPRIDE P154 RED OCC RED GRAZER 610Z RED OCC VANESSA 829S RED OCC EASY RED MAF RED OCC VANESSA 797Y RED EDIE CRK NORSEMAN KING 91T RED RIDGE SIDE ROSE 2S

EPD'S	CED: 8	BW: -1.1	WW: 22	YW: 47	MILK: 27
ACTUAL PERFORMANCE	BW: 83	DAM BW: 67	DAM WT: 1215	AOD: 5	

- Heifer Bull.
- Triple bred to the Red OCC Vanessa 829S cow-2X through Gunther, and 1X through the original OCC Easy Red bull. We were glad to see that Gunther 624G was double bred to 829S, who was in turn linebred to the great Leachman Vanessa 5900 cow that Tim Ohlde used to lock in his Red Angus herd.

LOT	36	RED EDIE CREEK GUNTHER 128K
	TATT00: ECA 128K	DOB: May 10, 2022 REG#: 2301896
BORN 1ST CYCLE?	Yes	RED REDHILL P707 NEBULA 153Z <b>RED OCC GUNTHER 624G</b> RED OCC VANESSA 604C
CALVING EASE	5	
UDDER	4	RED OCC EASY RED 868A <b>RED EDIE CREEK PRINCESS 119E</b> RED EDIE CREEK PRINCESS 120C
FLESHING	5	RED BECKTON NEBULA P P707 RED BUF CRK REDPRIDE P154 RED OCC RED GRAZER 610Z RED OCC VANESSA 829S RED OCC EASY RED MAF RED OCC VANESSA 797Y RED EDIE CRK NORSEMAN KING 91T CROWFOOT PRINCESS 3075N

EPD'S	CED: 10	BW: -2.3	WW: 27	YW: 51	MILK: 30
ACTUAL PERFORMANCE	BW: 79	DAM BW: 70	DAM WT: 1200	AOD: 5	

- Heifer bull. 3/4 brother to Lot 35. Buy them both and get a consistent set of calves with excellent maternal replacement potential.
- Dam 119E is a full sister to the 75F cow whom we are retaining a son from this, 2022-born calf crop. She has calved 1st cycle every year of her career also.
- Dam 119E sold a son in our sale last year to Clayton Martin of Ontario for \$7700.



OCC Easy Red 868A • Maternal Sire to many of the Red Angus Sale Bulls.

LOT	37	RED EDIE CREEK NEBULA 31K
	TATT00: ECA 31K	DOB: April 27, 2022 REG#: 2289631
BORN 1ST CYCLE?	Yes	RED BECKTON NEBULA P P707 <b>RED CALVO NEBULA 67C</b> RED CALVO ROSE 8Z
CALVING EASE	5	
UDDER	3	RED OCC EASY RED 868A <b>RED EDIE CREEK ROSE 112E</b> RED EDIE CREEK MRS TOAST 31C
FLESHING	4	RED BECKTON NEBULA M045 RED BECKTON LANA M809 EP RED BECKTON NEBULA P P707 RED BECKTON ROSE U272 JJ RED OCC EASY RED MAF RED OCC VANESSA 797Y RED PCC COLORADO HOB0 RED RIDGE SIDE MRS TOAST 2A

EPD'S	CED: 12	BW: -2.6	WW: 34	YW: 69	MILK: 26
ACTUAL PERFORMANCE	BW: 72	DAM BW: 64	DAM WT: 1280	AOD: 5	

- Heifer bull. Calvo Nebula 67C is double bred to the great Beckton Nebula P P707 bull, a curve bender bull whose daughters were great cows.
- Dam 112E is an Easy Red 868A out of a PCC Colorado Hobo daughter, and calved 1st cycle every year. His udder score is lower because 112E's udder was a bit loose hanging. Her teat size was still good though.



Sire of Lot 37

LOT	38	RED EDIE CREEK NEBULA 19K
	TATT00: ECA 19K	DOB: April 23, 2022 REG#: 2289614
BORN 1ST CYCLE?	Yes	RED BECKTON NEBULA P P707 <b>RED CALVO NEBULA 67C</b> RED CALVO ROSE 8Z
CALVING EASE	4	
UDDER	3	RED OCC EASY RED 868A <b>RED EDIE CREEK BLACKBIRD 58E</b> RED RIDGE SIDE BLACKBIRD 23A
FLESHING	4	RED BECKTON NEBULA M045 RED BECKTON LANA M809 EP RED BECKTON NEBULA P P707 RED BECKTON ROSE U272 JJ RED OCC EASY RED MAF RED OCC VANESSA 797Y RED RIDGE SIDE TRENDY RED RIDGE SIDE BLACKBIRD 23T

EPD'S	CED: 10	BW: -2	WW: 34	YW: 70	MILK: 27
ACTUAL PERFORMANCE	BW: 79	DAM BW: 70	DAM WT: 1130	AOD: 5	

- Heifer bull. 3/4 brother to lot 37, just from a different cow family.
- Moderate, stout bull. Will reduce frame size.

## LOT 39 RED EDIE CREEK EASY 27K

TATT00: ECA 27K DOB: April 25, 2022 REG#:

BORN 1ST CYCLE?	Yes	RED OCC EASY RED 868A <b>RED EDIE CREEK EASY 31D</b>	RED OCC EASY RED RED OCC VANESSA 797Y
CALVING EASE	5	RED CROWFOOT LADY 6503S	RED CROWFOOT RAMBLER 1038L
UDDER	4	RED CALVO NEBULA 67C <b>RED EDIE CREEK DIXIE ERICA 3G</b>	RED CROWFOOT LADY 1131L
FLESHING	3	RED EDIE CREEK DIXIE ERICA 26E	RED BECKTON NEBULA P P707
			RED CALVO ROSE 8Z
			RED OCC EASY RED 868A
			EDIE CREEK DIXIE ERICA 57C

EPD'S	CED:	BW:	WW:	YW:	MILK:
ACTUAL PERFORMANCE	BW: 66	DAM BW: 62	DAM WT: 1220	AOD: 3	

- Sleep-all-night Heifer bull. Sire 31D hasn't yet been sire verified, which is why lot 39 is not registered. 31D was an outstanding bull that served Cody McDaniel of Wyoming, a Pharo Cattle Co bull producer.
- Dam 3G is an excellent mother, and her mother 26E was a belly-dragger cow who was an Easy Red 868A daughter that had more OCC bloodlines back in her pedigree.

## LOT 40 EDIE CREEK FULL BORE 191K

TATT00: ECA 191K DOB: May 24, 2022 REG#: 2290197

BORN 1ST CYCLE?	No	EDIE CREEK FULL BORE 34F <b>EDIE CREEK FULL BORE 31H</b>	COLE CREEK FULL BORE 730
CALVING EASE	2	EDIE CREEK DIXIE ERICA 71B	O C C DIXIE ERICA 606S
UDDER	4	O C C WORTHY MAN 967W <b>EDIE CREEK 967W BETSY 138D</b>	EDIE CREEK 839L 298 LEGACY 5Y
FLESHING	3.5	AWH BETSY 12R	CROWFOOT DIXIE ERICA 4895P
			O C C SENTINEL 714S
			O C C DIXIE ERICA 859T
			G T MAXIMUM
			2J BETSY 3H

EPD'S	CED: 3	BW: 1.4	WW: 39	YW: 72	MILK: 20
ACTUAL PERFORMANCE	BW: 92	DAM BW: 83	DAM WT: 1380	AOD: 6	

- Bigger framed cow bull here. If you like the maternal aspects of our program, but would like a bit more frame size, this bull will do it, with frame score increases from the Full Bore line as well as good ole GT Max behind him.
- Born in the 2nd cycle himself, 191K was too good to keep him out of the sale. The 31H sire really added goodness to the mix, both phenotypically as is evident with his sons, and maternally through the 606S & 71B cows in his pedigree.
- Maternal brother sold to Jason Kehler of Kehler Farms at Carman, MB.

## LOT 41 EDIE CREEK FULL BORE 53K

TATT00: ECA 53K DOB: April 30, 2022 REG#: 2289799

BORN 1ST CYCLE?	Yes	EDIE CREEK FULL BORE 34F <b>EDIE CREEK FULL BORE 31H</b>	COLE CREEK FULL BORE 730
CALVING EASE	3	EDIE CREEK DIXIE ERICA 71B	O C C DIXIE ERICA 606S
UDDER	4	O C C WORTHY MAN 967W <b>EDIE CREEK WM LUCY 116D</b>	EDIE CREEK 839L 298 LEGACY 5Y
FLESHING	4	EDIE CREEK LEGACY LUCY 154U	CROWFOOT DIXIE ERICA 4895P
			O C C SENTINEL 714S
			O C C DIXIE ERICA 859T
			HILLFIRE LEGACY 518R
			ROSEBANK LUCY 87K

EPD'S	CED: 5	BW: 0.5	WW: 44	YW: 77	MILK: 22
ACTUAL PERFORMANCE	BW: 78	DAM BW: 99	DAM WT: 1230	AOD: 6	

- Cow bull here also, a 3/4 brother to Lot 40, as both dams are daughters of the OCC Worthy Man bull we had for many years. The Lucy cow family carries bigger birthweights, which is why we didn't give him a better calving ease rating.
- Dam 116D has calved 1st cycle every year except for one.
- Maternal brother out of the Big Time 848C bull sold to the maternally-focused herd of Taylor Triplet Farm at Mather, MB.

## LOT 42 EDIE CREEK FULL BORE 50K

TATT00: ECA 50K DOB: April 30, 2022 REG#: 2289797

BORN 1ST CYCLE?	Yes	EDIE CREEK FULL BORE 34F <b>EDIE CREEK FULL BORE 31H</b>	COLE CREEK FULL BORE 730
CALVING EASE	4	EDIE CREEK DIXIE ERICA 71B	O C C DIXIE ERICA 606S
UDDER	4	MH TITAN 752 <b>EDIE CREEK ENCHANTRESS 22D</b>	EDIE CREEK 839L 298 LEGACY 5Y
FLESHING	4	EDIE CREEK ENCHANTRESS 25U	CROWFOOT DIXIE ERICA 4895P
			O C C GREAT PLAINS 943G
			MH MELISA 357
			O C C MAGNITUDE 805M
			CROWFOOT ENCHANTRESS 4091P

EPD'S	CED: 10	BW: -0.8	WW: 32	YW: 59	MILK: 17
ACTUAL PERFORMANCE	BW: 82	DAM BW: 77	DAM WT: 1340	AOD: 6	

- Heifer bull.
- Dam was a Titan daughter whose granddam was one of the nicest OCC Hunter daughters we've had.

## BULL RATINGS EXPLAINED

**CALVING EASE:** Based on the bull's birthweight, his parents' birthweight, and his own EPD's. Also based on the assumption that the bull will be breeding small-framed Angus/British cattle--if the bull will be breeding larger-framed Continental cattle, a three-star (\*\*\*) bull could work on heifers. These are simply guidelines to help your decision making. You are ultimately responsible for the matings of your own cattle.

**CALVING EASE RATING:** Here's what the numbers tell you:

- 1 - Suitable for breeding cows only - 100 lb+ Birth weights possible
- 2 - Suitable for breeding smaller cows-90 lb+ Birth weights possible
- 3 - Suitable for breeding cows and larger-framed, mature heifers - 85 lb BW's
- 4 - Suitable for breeding heifers & cows too
- 5 - HEIFER BULL, easy deliveries with vigorous calves at birth!

**UDDER RATING:** Based on the combination of what the sire and dam bring to the equation. The quality of the dam's udder structure- teat shape and size, and what the sire's genetic potential brings. Rated between "1" - "5", a score of "3" would be an average, functional udder, while a score of "5" would be a perfectly level udder with small, shapely teats.

**BORN 1ST CYCLE:** This indicates if a bull was born in the first 21 days of the calving season. This includes bulls that were born early from short gestation. 90% of All the bulls on offer were born in the first cycle of our calving season.

**AOD:** Age of Dam. Actual age of the bull's dam when she raised him.





**Edie Creek Titan 31E - Purchased by Sirett Ranching**

"We drive 12 hours to purchase bulls from Edie Creek for our commercial cow herd, and continue to do so because the cattle have proved themselves that valuable. In our herd, feet and udders are markedly improved and conception rates have been higher since using their bulls: cull ratios are lower. After five years and purchasing 15 bulls, no Edie Creek bull has been culled or lost for any other reason except for injury due to multi-sire fighting. The first Edie Creek bull we purchased - they held the right to buy him back when done with him. We are still not done with him!"

*- Sirett Ranching, Lashburn Sask.*

LOT	43						EDIE CREEK 31H FULL BORE 110K						
	TATT00: ECA 110K				DOB: May 08, 2022		REG#: 2302901						
	BORN 1ST CYCLE?		Yes		EDIE CREEK FULL BORE 34F EDIE CREEK FULL BORE 31H EDIE CREEK DIXIE ERICA 71B								
	CALVING EASE		5		COLE CREEK FULL BORE 730 O C C DIXIE ERICA 606S EDIE CREEK 839L 298 LEGACY 5Y CROWFOOT DIXIE ERICA 4895P BALLOT OF BELLADRUUM OCTORARO GAMMER 203 BASIN Q BAR 163 MH DIXIE ERICA 113								
	UDDER		4		OCTORARO BALLOT STO 6 MH DIXIE ERICA 664 MH DIXIE ERICA 336								
FLESHING		3											
EPD'S				CED:		BW: -4.5		WW: 20		YW: 36		MILK: 20	
ACTUAL PERFORMANCE				BW: 60		DAM BW: 71		DAM WT: 1235		AOD: 6			

- Great Heifer bull.
- Dam has the quintessential pedigree of Longevity: Ballot 6 bred until he was 13, Basin Q Bar was renowned for producing long-lived cows, and MH Dixie Erica 113 is a foundation cow in the Howrey Angus herd who lived til she was 17.

LOT	44		EDIE CREEK HUNTER 139K				
	TATT00: ECA 139K		DOB: May 11, 2022		REG#: 2303692		
BORN 1ST CYCLE?	Yes		EDIE CREEK HUNTER 2D EDIE CREEK HUNTER 14H EDIE CREEK BETSY 52F		O C C HUNTER 928H O C C DIXIE ERICA 606S MH TITAN 752 EDIE CREEK BETSY 106C EDIE CREEK GREAT ONE 79Y CH GEORGINA 626 O C C BOUT TIME 806B EDIE CREEK CAROLINE 86C		
CALVING EASE	5		EDIE CREEK GREAT ONE 77F EDIE CREEK CAROLINE 34H EDIE CREEK CAROLINE 53E				
UDDER	5						
FLESHING	4						
EPD'S			CED: 15	BW: -3.8	WW: 34	YW: 57	MILK: 19
ACTUAL PERFORMANCE			BW: 62	DAM BW: 71	DAM WT: 1030		AOD: 2

- Heifer bull: a Terrific choice to be used on your heifers.
- His dam is a moderate young cow who has a picture perfect udder, and good fleshing ability.
- Sire 14H Sold through the, 2022 Edie Creek sale to Mike Slepicka after breeding heifers as a yearling.

LOT	45										EDIE CREEK GREAT ONE 195K									
	TATT00: ECA 195K					DOB: May 27, 2022					REG#: 2303680									
	BORN 1ST CYCLE?		No		EDIE CREEK GREAT ONE 79Y EDIE CREEK GREAT ONE 195K CROWFOOT ERICA 1652L															
	CALVING EASE		5		O C C GREAT PLAINS 943G O C C JUANADA 737L G A P TRAVELER 1489 PAT LADY ERICA 8984															
	UDDER		5		EDIE CREEK GREAT ONE 79Y CH GEORGINA 626 OCTORARO BALLOT STO 6 MH FRANCES 2126															
FLESHING		4																		
EPD'S					CED: 11		BW: -2.5		WW: 21		YW: 37		MILK: 17							
ACTUAL PERFORMANCE					BW: 64		DAM BW: 71		DAM WT: 860		AOD: 2									

- Heifer bull with excellent calving ease.
- Another pedigree oozing with Longevity & Fertility: Lady Erica 1652L produced til she was 18, as did the Frances 6357, who is the dam of the 2126 cow. Double bred to the Great One 79Y bull adds function and fertility, as his daughters have been consistently more fertile than their dams.
- Very moderate sized cow family, but efficient enough as this calf weaned off at 53% of his mother's body weight.

LOT	46 EDIE CREEK GATE KEEPER 15K				
	TATT00: ECA 15K		DOB: April 21, 2022		REG#:
BORN 1ST CYCLE?	Yes	O C C BLUEPRINT 632B <b>O C C GATE KEEPER 678G</b> O C C DIXIE ERICA 638D		O C C MODERATOR 825M O C C DIXIE ERICA 628W O C C GREAT PLAINS 943G O C C DIXIE ERICA 721Y SHOSHONE PIVOT 6159	
CALVING EASE	5	SHOSHONE FRANZ 419 <b>MH MELISA 633</b> MH MELISA 247		MH FRANCES 64 MH WARRIOR 914 MH MELISA 751	
UDDER	4				
FLESHING	4				
EPD'S		CED:	BW:	WW:	YW:
ACTUAL PERFORMANCE	BW: 63	DAM BW: 58		DAM WT: 1280	AOD: 6

- Heifer bull with excellent calving ease.
- Back into the 678G sire group. OCC Gate Keeper 678G sons in this sale fit what our program is about. We are excited about the daughters we have coming into our herd.
- Dam, 633 is a beautiful, wide-hipped cow that has lots of calving ease built into her pedigree.

LOT	47	EDIE CREEK GATE KEEPER 197K			
		TATT00: ECA 197K	DOB: May 28, 2022	REG#: 2301860	
BORN 1ST CYCLE?	Yes	O C C BLUEPRINT 632B <b>O C C GATE KEEPER 678G</b> O C C DIXIE ERICA 638D			
CALVING EASE	3				
UDDER	3	MH <b>MH MINA 620</b> MH MINA 029			
FLESHING	4	O C C MODERATOR 825M O C C DIXIE ERICA 628W O C C GREAT PLAINS 943G O C C DIXIE ERICA 721Y COLE CREEK CEDAR RIDGE 1V MH FRANCES 720 MH TITAN 752 MH MINA 609			

EPD'S	CED: 0.9	BW: 30	WW: 55	MILK: 20
ACTUAL PERFORMANCE	BW: 88	DAM BW: 67	DAM WT: 1220	ADD: 6

- The Mina cows are some of our favourite for build and type. Mina 609 was the best cow we have had to exemplify the "wedge shaped female".
- Honest range cows have a type and kind that are profitable. You can't take feedlot genetics and expect low replacement costs in a cow herd.
- Maternal brother sold to Darwin Gork at Birnie, MB



MH Mina 029 - Maternal Granddam of Lot 47

LOT	48	EDIE CREEK GATE KEEPER 183K			
		TATT00: ECA 183K	DOB: May 21, 2022	REG#: 2301855	
BORN 1ST CYCLE?	No	O C C BLUEPRINT 632B <b>O C C GATE KEEPER 678G</b> O C C DIXIE ERICA 638D			
CALVING EASE	3.5				
UDDER	4	MH <b>MH DIXIE ERICA 621</b> MH DIXIE ERICA 763			
FLESHING	4	O C C MODERATOR 825M O C C DIXIE ERICA 628W O C C GREAT PLAINS 943G O C C DIXIE ERICA 721Y COLE CREEK CEDAR RIDGE 1V MH FRANCES 720 O C C GREAT PLAINS 943G MH DIXIE ERICA 439			

EPD'S	CED: 0.3	BW: 26	WW: 50	MILK: 20
ACTUAL PERFORMANCE	BW: 85	DAM BW: 65	DAM WT: 1195	ADD: 6

- Neat bull with 3 shots of OCC Great Plains in his pedigree. Great granddam is an OCC Hunter daughter out of the MH Dixie Erica 113 cow.
- She was one of the 4 foundation cows that our Howrey Angus herd was built around. Raising calves well into her teens. 113 was an average producer whose cow family strengths really shine through. She was 17yrs old when she was sold. All the cows for 4 generations in her maternal down-line raised calves into their teens. She carries the banner of longevity and functionality set forth by great breeders like Dale Davis of the Rollin Rock program and John Hamilton of the Cedar Hills program.
- This bull should be a reliable bet to produce really efficient, functional cows.

LOT	49	EDIE CREEK GATE KEEPER 190K			
		TATT00: ECA 190K	DOB: May 24, 2022	REG#: 2301858	
BORN 1ST CYCLE?	No	O C C BLUEPRINT 632B <b>O C C GATE KEEPER 678G</b> O C C DIXIE ERICA 638D			
CALVING EASE	2				
UDDER	4	O C C MISSING LINK 830M <b>EDIE CREEK ML830M FLORA 4Y</b> LENLOOK FLORA 26J			
FLESHING	3	O C C MODERATOR 825M O C C DIXIE ERICA 628W O C C GREAT PLAINS 943G O C C DIXIE ERICA 721Y O C C HEADLINER 661H O C C DIXIE ERICA 946K N BAR EMULATION EXT LENLOOK FLORA 30E			

EPD'S	CED: 6	BW: 1.7	WW: 34	YW: 62	MILK: 21
ACTUAL PERFORMANCE	BW: 88	DAM BW: 80	DAM WT: 1250	ADD: 11	

- We sold a maternal brother to this bull to VEE TEE Angus, Lloydminster, Alberta. We purchased that bull back a few years ago and he bred cows for us last summer as an 8yr old. Another maternal brother was the high selling bull in 2019 to Mike Slepicka of Waterhen, MB.
- Flora 4Y is a balanced OCC Missing Link daughter who has had a great career & is bred back to calve next year as a 12yr old. But she does have a sore hip now that is giving her trouble. Her EXT-sired dam raised 13 calves and retired at age 14.
- If you are looking for a little more frame size, this Flora cow family has some.

LOT	50	EDIE CREEK GREAT ONE 137K			
		TATT00: ECA 137K	DOB: May 11, 2022	REG#: 2303689	
BORN 1ST CYCLE?	Yes	EDIE CREEK GREAT ONE 79Y <b>EDIE CREEK GREAT ONE 77F</b> CH GEORGINA 626			
CALVING EASE	4				
UDDER	5	EDIE CREEK BIG TIME 848C <b>EDIE CREEK FLORA 74F</b> EDIE CREEK FLORA 1B			
FLESHING	3.5	O C C GREAT PLAINS 943G O C C JUANADA 737L O MR BANJO 41 147 LOGO CH GEORGINA 369 O C C BIG TIME 746Z O C C DIXIE ERICA 693N EDIE CREEK GREAT ONE 79Y EDIE CREEK 38J FLORA 75Z			

EPD'S	CED: 9	BW: -1.3	WW: 48	YW: 76	MILK: 21
ACTUAL PERFORMANCE	BW: 73	DAM BW: 61	DAM WT: 1250	ADD: 4	

- Here is another bull out of our great Flora cow family. Once again, a little more frame and growth to him. He was one of the bigger bulls at weaning time.
- Flora 74F is a beautiful Big Time 848C daughter who has calved 1st cycle every year. Fertility is the most important factor affecting Profitability. 5X more impactful than growth rate. Our cows don't calve first cycle because we put the feed into them to make sure it happens. We have selected and culled for cow families that have proven they can adapt to our environment and grazing practices.
- When 74F calves, she is not keen on us picking up and weighing her calves. We get it done, but she is not happy about it.



**CANADA'S FORAGE SEED INNOVATORS**



**•GRAZE YEAR ROUND•**

**ANNUAL COVER CROP FORAGES • PERENNIAL FORAGES • CUSTOM BLENDING**

**Take advantage of our 7% early pay discount until March 31st**

Graeme Finn 1 403 312-2240 | Grant Lastiwka 1 403 350-6394 |

Amber McNish 1 204 264-0609 | Roger Meyers 1 306 221-1558

• 1 877- COW CHOW • WWW.UNIONFORAGE.COM •



## LOT 51 EDIE CREEK GREAT ONE 143K

TATT00: ECA 143K DOB: May 12, 2022 REG#:

BORN 1ST CYCLE?	Yes
CALVING EASE	3.5
UDDER	4.5
FLESHING	3

EDIE CREEK BIG TIME 848C  
EDIE CREEK PRIDE 47G  
EDIE CREEK PRIDE 18D

OCC BIG TIME 746Z  
OCC DIXIE ERICA 693N  
MH TITAN 752  
CROFOOT PRIDE 5893R

EPD'S	CED:	BW:	WW:	YW:	MILK:
ACTUAL PERFORMANCE	BW: 79	DAM BW: 75	DAM WT: 1230		ADD: 3

- We did not get DNA sent in on this bull. His sire is either Edie Creek Great One 77F or his son, Edie Creek Great One 64H.
- There are many teenage cows close up in the pedigree, including the excellent OCC Dixie Erica 693N who retired here at age 19 last year. She is the dam of Big Time 848C.
- Melisa 357, MH Titan's dam, retired at age 14, and the 5893R cow had 20 natural calves here!

## LOT 52 EDIE CREEK GREAT ONE 99K

TATT00: ECA 99K DOB: May 07, 2022 REG#: 2304273

BORN 1ST CYCLE?	Yes
CALVING EASE	3.5
UDDER	5
FLESHING	4

EDIE CREEK GREAT ONE 79Y  
EDIE CREEK GREAT ONE 77F  
CH GEORGINA 626  
NCC FULL BORE 629  
EDIE CREEK DIXIE ERICA 106G  
O C C DIXIE ERICA 606S

O C C GREAT PLAINS 943G  
O C C JUANADA 737L  
O MR BANJO 41 147 LOGO  
CH GEORGINA 369  
COLE CREEK FULL BORE 730  
NCC JUANADA 2025  
O C C GREAT PLAINS 943G  
O C C DIXIE ERICA 612H

EPD'S	CED: 5	BW: 0.6	WW: 38	YW: 67	MILK: 20
ACTUAL PERFORMANCE	BW: 84	DAM BW: 76	DAM WT: 1130		ADD: 3

- ECA 106G has passed the test of calving first cycle every year. Once a young cow can do that for her first 2 or 3 years, she is set up well for a long career.
- She had a son in last years sale that sold for \$7,000 & she raised a stunning OCC Legacy 839L daughter this past year. She is also the second last-born natural daughter of our 606S cow who just retired this year at age 18.
- This bull will make daughters with udders better than their mothers: 77F has reliably done that and 606S has a great udder at age 18. Also note that there are 3 shots of OCC Great Plains in the pedigree.

## LOT 53 EDIE CREEK GREAT ONE 186K

TATT00: ECA 186K DOB: May 21, 2022 REG#: 2303686

BORN 1ST CYCLE?	NO
CALVING EASE	5
UDDER	5
FLESHING	4

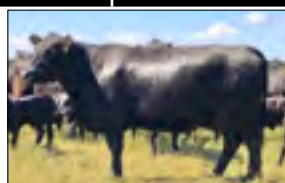
EDIE CREEK GREAT ONE 79Y  
EDIE CREEK GREAT ONE 77F  
CH GEORGINA 626

O C C HUNTER 928H  
EDIE CREEK DIXIE ERICA 21E  
O C C DIXIE ERICA 606S

O C C GREAT PLAINS 943G  
O C C JUANADA 737L  
O MR BANJO 41 147 LOGO  
CH GEORGINA 369  
O C C FOCUS 813F  
O C C DIXIE ERICA 960E  
O C C GREAT PLAINS 943G  
O C C DIXIE ERICA 612H

EPD'S	CED: 10	BW: -1.7	WW: 27	YW: 48	MILK: 17
ACTUAL PERFORMANCE	BW: 75	DAM BW: 68	DAM WT: 1270		ADD: 5

- Heifer bull. 186K will be a calving ease bull that will also leave excellent daughters from the cows he breeds. Really Neat pedigree, lining up a pile of proven, low input cattle.
- Dam, 21E is one of Jonathan's favorite cows: an OCC Hunter daughter from 606S that is sleek, feminine, and has perfect feet & udder.
- Despite 186K being born early in the 2nd cycle, 21E pulled up to the end of the 1st cycle for her 2023 calf. We expect a great career from her and may flush embryos in the future.



Dam of Lot 53

## LOT 54 EDIE CREEK GREAT ONE 77K

TATT00: ECA 77K DOB: May 4, 2022 REG#:

BORN 1ST CYCLE?	Yes
CALVING EASE	4
UDDER	4
FLESHING	3.5

SINCLAIR EXECUTIVE 9XV2  
EDIE CREEK BETSY 68G  
EDIE CREEK BETSY 12E

N BAR EMULATION EXT V722  
N BAR PRIMROSE Y3051  
MH TUBBY 56  
EDIE CREEK BETSY 96B

EPD'S	CED:	BW:	WW:	YW:	MILK:
ACTUAL PERFORMANCE	BW: 79	DAM BW: 76	DAM WT: 1355		ADD: 3

- Heifer bull. We didn't DNA test this bull, so he is either sired by Great One 77F or his excellent son out of the 606S cow, Great One 64H.
- Dam, 68G is a nice young (AI sired) daughter of Sinclair Executive, out of of very nice Tubby x Legacy cow who is making her mark in the herd now too. 68G has managed to calve in each of her 1st 3 calving opportunities.



# BRED HEIFERS

**SELLING TODAY ARE 11 BRED HEIFERS**

**5 BLACK ANGUS | 6 RED ANGUS**

DUE TO START CALVING MAY 5th, 2024 EXPOSED TO CALVING EASE ECA BULLS FOR 45 DAYS

	TAG	WT	DAM	SIRE	COLOUR
GROUP 1	ECA 141K	765	MH LUCY 621	OCC GATE KEEPER 678G	BLACK
	ECA 86K	740	MH LUCY 631	OCC GATE KEEPER 678G	BLACK
GROUP 2	ECA 173K	790	EDIE CREEK KAREN 6D	EDIE CREEK FULL BORE 31H	BLACK
	ECA 38K	805	EDIE CREEK LADY ERICA 134E	EDIE CREEK FULL BORE 57H	BLACK
	ECA 155K	820	EDIE CREEK MELISA 142F	Edie Creek sire, not determined	BLACK
GROUP 3	ECA 147K	845	RED EDIE CREEK 79D	OCC GUNTHER 624G	RED
	ECA 67K	1000	RED XO CROWFOOT BRNDINA 322A	OCC GUNTHER 624G	RED
	ECA 85K	780	RED EDIE CREEK PRINCETRES 130G	OCC GUNTHER 624G	RED
GROUP 4	ECA 32K	760	RED EDIE CREEK PRINCESS 32H	Red Edie Creek Nebula 88H	RED
	ECA 72K	855	RED EDIE CREEK BIEBIRD 103H	Red Edie Creek Nebula 88H	RED
	ECA 150K	745	RED EDIE CREEK LUCY 24H	Red Edie Creek Nebula 88H	RED

We are excited to offer bred heifers again this year! They will sell in groups as shown in this catalog. All heifers are purebred Angus heifers, but are being sold as commercial females, with no registration papers transferred.

Delivery is NOT included on purchase of the bred heifers. Arrangements for pickup and delivery (at cost) should be done as soon as possible after the close of the sale.

Our program is designed to create Angus cattle that can raise a calf on their own, and do it consistently. Our goal is to supply our customers with females that can be used to create a profitable cowherd factory which you can then cross with terminal sires to capture the cumulative benefits of hybrid vigour and the "flavour of the day" in hide colour. Doing this will create a functional, long-lived cowherd that will wean calves at optimum efficiency in your commercial ranch environment. The Opportunity is Yours!

All the Angus heifers come straight out of our Purebred herd, but sell without registration papers. These heifers have not been pampered. They were corn grazing last winter until they were weaned at 10 months of age in March of 2023. Post-weaning, they were on a forage-only diet (no corn silage or grain).

This past winter they were grazing with the cow herd until we needed to bring them home to take videos for the sale. They are fit and in great shape, not lazy or over fed. They are walking at least a mile a day right now.



# SEMEN LOTS



OCC LEGACY 839L



LEGACY DAUGHTER



OCC MISSING LINK 830M



OCC HEADLINER • SIRE OF MISSING LINK



OCC Eureka 865E • Sire of OCC Magnum 749M



OCC JUANADA 775C

- S1 – 2 straws of OCC Legacy 839L
- S2 – 2 straws of OCC Legacy 839L
- S3 – 2 straws of OCC Missing Link 830M
- S4 – 2 straws of OCC Missing Link 830M
- S5 – 2 straws of OCC Magnum 749M
- S5 – 2 straws of OCC Magnum 749M

## S1-S2 OCC LEGACY 839L

TATT00: 839L DOB: Sept. 09 2001 REG#: 14181939

D H D TRAVELER 6807  
O C C ECHELON 857E  
DIXIE ERICA OF C H 1019

O C C ANCHOR 771A  
O C C DIXIE ERICA 960E  
O C C DIXIE ERICA OF R R 4345

Q A S TRAVELER 23-4  
BEMINDFUL MAID D H D 0807  
PBC 707 1M F0203  
DIXIE ERICA OF C H 615  
D H D TRAVELER 6807  
O C C JUANADA 709V  
SHOSHONE VANTAGE JB23  
DIXIE ERICA OF R R 9275

EPD'S	CED: 9	BW: 1.2	WW: 31	YW: 60	MILK: 22
-------	--------	---------	--------	--------	----------

- 839L is one of the most phenotypically correct bull that we've seen, and was especially athletic and masculine—he still moved like a big cat at the age of 10!
- Legacy was a masculine, hormonally-balanced, athletic breeding machine that duplicates his own type and breeding ability (libido) in his sons. He also leaves broody, deep, easy fleshing cows.
- We have been fortunate to walk several sons in our pastures, and will continue to use him in our A.I. program.
- Sire Echelon is a son of the great Dixie Erica of CH 1019 cow, the OCC matron of Emblazon, Focus, Great Plains and many foundational OCC sires. Having lived until age 21, she set the bar for longevity, productivity, and had one of the most refined udder structures of any Angus cow.

## S3-S4 OCC MISSING LINK 830M

TATT00: 830M DOB: Sept. 16 2002 REG#: 14456399

O C C EMBLAZON 854E  
O C C HEADLINER 661H  
O C C JUANADA 858F

O C C GLORY 950G  
O C C DIXIE ERICA 946K  
O C C DIXIE ERICA 816B

D H D TRAVELER 6807  
DIXIE ERICA OF C H 1019  
BASIN RAINMAKER 654X  
O C C JUANADA 709V  
O C C EXODUS 712E  
O C C DIXIE ERICA 971E  
D H D TRAVELER 6807  
DIXIE ERICA OF C H 1019

EPD'S	CED: 8	BW: -0.3	WW: 45	YW: 74	MILK: 22
-------	--------	----------	--------	--------	----------

- This is a changer bull. If you want to add fleshing ability & muscle, plus reduce frame size in one mating, Missing Link can do that for you.
- We have some excellent Missing Link cows that have worked in our herd, and have had some very good-looking sons, including the Edie Creek All Star 1A bull who sold to Frederic Gouin in Quebec.
- "Missing Link was our pick of his calf crop and he is not letting us down. He is long, clean, thick, smooth and stylish... Sired by the great proven Argentine AI sire OCC Headliner 661H and out of a beautiful Glory daughter whose dam is 816B (Emblazon's full sister)." - Tim Ohlde

## S5-S6 OCC MAGNUM 749M

TATT00: 749M DOB: March 26, 2002 REG#: 14348019

O C C BACKSTOP 888B  
O C C EUREKA 865E  
BLACKBIRD OF R R 1204

O C C CORNERSTONE 890C  
OCC JUANADA 818E  
O C C JUANADA 775C

D H D TRAVELER 6807  
REVOLUTION ROSE OF R R 9239  
PBC 707 1M F0203  
BLACKBIRD OF R R 7023  
D H D TRAVELER 6807  
ROLLIN ROCK BLACKBIRD 1304  
N BAR EMULATION EXT  
O C C JUANADA 709V

EPD'S	CED: 8	BW: -0.3	WW: 45	YW: 74	MILK: 22
-------	--------	----------	--------	--------	----------

- Magnum has a neat OCC pedigree that brings in some old proven cows: Blackbird of RR 1204 was a pathfinder F0203 daughter, and OCC Juanada 775C is a beautiful maternal sister to OCC Anchor, that is sired by EXT! She went past 17 years.
- His Sire is OCC Eureka 865E. Eureka is a Pathfinder son of one of Tim Ohlde's foundation females Blackbird of RR 1204 who is sired by PBC 707 1M F0203.
- Eureka is triple bred to the great PBC 707 1M F0203.
- "The Dam of Eureka - Blackbird of RR 1204, was a Pathfinder cow that produced 10 calves with an average weaning ratio of 110 and 10 yearlings with an average ratio of 107." - Tim Ohlde
- The Crowfoot 7723T cow who worked here until she was 14 and contributed so much to our program, was a granddaughter of the Magnum bull through her sire Crowfoot Macho 4549P, who we also got a couple of excellent bulls from early on.





## HOWREY ANGUS & EDIE CREEK ANGUS HAVE JOINED FORCES!



The History of Howrey Angus and Edie Creek Angus has been intertwined since 2014 when Stefan & Jonathan Bouw first travelled down to Monte Howrey's Vale, SD ranch to meet him in a last-minute rendezvous that almost didn't happen.

Back in 2014, Stefan and Jonathan had already been in pursuit of the best forage-adapted maternal genetics possible for nearly a decade, and had established the Edie Creek Angus cowherd back in Manitoba, which was improving as quickly as the school of hard knocks was handing out lessons.

Throughout the years, we would catch wind of Howrey Angus bloodlines, always having heard good things about them. When we fortuitously met Monte Howrey one late October afternoon on his ranch, we connected and understood that Monte was a breeder who was purely focused on making the best cow possible, and in a replicable manner—for the good of the commercial cow industry. Monte spoke, (among other things,) of a mature herdsire named MH Titan 752, and our interest was piqued!

Stefan tirelessly persuaded Monte that since Titan was already 7, and then 8 years old, he surely could let go of him, and that we could further prove his worth in a different climate. Eventually the export paperwork was done, and Titan immigrated to Manitoba, Canada, where he bred cows until he was 13 years old.

Titan made a very useful cross on our heavily (Traveler) 6807-influenced cowherd, and brought all of the utility of the Emulation line through his sire, OCC Great Plains 943G, along with the stabilized maternal type of his Dixie Erica of CH 1019 granddam and the MH Melisa 357 dam.

In the winter of 2021/2022 Monte approached us with the offer to sell his cow herd to us. We were grateful for the opportunity, so with great excitement we expanded our breeding program by purchasing the Howrey Angus cowherd in Sterling, North Dakota. Monte Howrey has been a great mentor to us and his cattle have adapted & excelled in our low input, maternal-focused Edie Creek Angus herd in Manitoba, Canada.

Our Howrey Angus cow herd is located in Sterling, North Dakota on the Rath Family Ranch. Kip Rath and his family have a commercial cow herd, and our cows live year-round on their ranch. The Rath family are excellent caretakers of the cattle and great stewards of the land, and we are very grateful to be working with them!

Our breeding philosophies have been shaped by Monte and other legendary Angus breeders of grass-type cattle, and we are committed to stay true to the direction Monte has focused on. Our Edie Creek Angus cowherd in Canada has been shaped by Howrey Angus genetics and shares the same goals and selection criteria. These cattle work well in any environment (all across Canada, and from Montana shortgrass country down to Fescue country in the Eastern US), so we see no reason to change their function or phenotype!



**HOWREY ANGUS**

**EDIE CREEK**  
  
**ANGUS**



# TERMS & CONDITIONS

**BORN 1ST CYCLE:** This indicates if a bull was born in the first 21 days of the calving season. This includes bulls that were born early due to shorter gestation.

**BULL DEVELOPMENT:** These bulls have been raised on their mother's milk and grass. For their first winter, they grazed cover crop at the side of their dams until the end of December when they started corn grazing. They were weaned mid-January 2023. At this point they were brought home and fed grass seed screenings, sunflower screenings, 4lbs of barley and 3lbs DM Corn Silage. Their hay rings had either hay or green feed silage bales. In May of 2023 they were turned out to pasture, with no supplements, where they grew on grass until the end of October. We started giving them silage bales at this time. Bulls are fed with the goal of developing them into hard muscled bulls. Starting in December of 2023 they were fed some corn silage along with free choice hay or green feed silage bales in their rings. As you will see, they have not been pushed with hard feed to ensure that they breed longer for you.

**THE BULL PROGRAM:** Bulls can be kept at Edie Creek Angus for no feed charge until April 1st. After that it will be \$2.5/day until May 1st. After that the cost will be \$3/day. Free delivery available in Manitoba. If you take your bull home on sale day we will give you a \$50 discount on each bull. We strongly recommend that you purchase insurance on any bulls returning to our yard after the sale. We are not responsible for any un-insured injuries that occur before the bull is delivered.

**TERMS AND CONDITIONS:** The terms of sale are by cash or cheque. Settlement to be made immediately after the completion of the sale. The right of property will not pass until after settlement is made. Bulls will not be released until settlement is made.

**BIDS:** Every animal in the sale will be sold to the highest bidder and may be subject to a minimum/reserve bid.

**DISPUTES:** In case of disputes, bidding will be re-opened between the parties involved. If no further bid is made, the buyer will be the person from whom the auctioneer accepted the last bid. The auctioneer's decision on all disputes is final.

**ANNOUNCEMENTS AND CHANGES:** All announcements and changes made from the auction block will take precedence over the printed matter in this catalogue. Buyers are therefore cautioned to pay close attention to any such announcements.

**PURCHASER'S RISK:** Each animal becomes the risk of the purchaser as soon as the auctioneer's hammer falls for the final time.

**LIABILITIES:** All persons attending the sale do so at their own risk and sellers assume no liability, legal or otherwise, for any accidents occurring in or about the premises.

**GUARANTEE:** The Bulls have been evaluated for breeding soundness and semen quality by Beausejour Animal Hospital. We guarantee to provide you with a sound, fertile bull at the point of sale. Should your bull fail to be a satisfactory breeder in his first breeding season, he will be replaced with a bull of equal value or a credit will be given towards the purchase of another bull. We will not provide the replacement or credit for a bull that is physically injured or mismanaged. It is the responsibility of the buyer to insure their bulls if desired.

**CANADIAN DELIVERIES:** For our Canadian customers outside of Manitoba we will assist in covering the trucking bill. You pay the first \$250/bull, and we will cover the rest. Delivery in Manitoba is free.

**USA DELIVERIES:** Bulls selling into the USA will be charged an additional \$250 CDN/bull to cover export testing fees. We will assist with arrangements for the bulls to be shipped to wherever you are in the United States at the buyer's cost. HS Knills is the trucking company we have used in the past. Contact them to get an idea of what the brokerage and trucking costs will be.

**INSURANCE:** The animal becomes the responsibility of the purchaser as soon as it is sold. Insurance will be available sale day.

**HALF POSSESSION/HALF INTEREST BULLS:** Edie Creek Angus reserves the right to use the bull to breed for 2 breeding seasons (July 20- Sept 20). Buyer uses the bull in 2024, 2025 & 2026, and Edie Creek Angus has the right to use him in 2027 & 2028, after which the buyer receives the bull back and keeps full possession and salvage value of the bull. If you choose to double your bid on the sale day, you own the bull entirely, but Edie Creek Angus reserves the right to collect 200 straws of semen for in-herd use. Insurance bought by the buyer would be collected by the buyer only. Edie Creek Angus will self-insure their portion of the bull ownership.

**1ST RIGHT OF REFUSAL BULLS:** Edie Creek Angus reserves the right (but might choose not to exercise the right) to have the first opportunity to buy the bull back from you when you are finished with him.



# THOUGHTS ON BULL FERTILITY

**By Iain Aitken, Luing breeder, Medicine River Luings**

When a rancher buys a new bull it is usually with hopes that he will bring genetic improvement to the herd, but above all else his job is to successfully impregnate the females in the herd. Like most bull sellers in Canada we have our vet perform a Breeding Soundness Evaluation (BSE) every spring on the bulls we are selling along with our herd bulls. I think this is time and money well spent as it can detect infertile or sub-fertile bulls through a semen test performed on the bull.

The part of the BSE that I think has less value is the act of recording scrotal measurements. I know that most breeds have requirements for minimum scrotal size before animals can be sold in Society/Association sales but I wonder if it isn't just an extension of man's natural desire to always equate bigger numbers with better animals? The principle behind scrotal measurement is that by measuring the circumference of the scrotum at the widest point around the testicles you can establish the size of the "factory" for sperm production. This is based on the assumption that the testicles are spherical which some breeds like Luing and Galloway aren't as they tend to be more banana shaped than round. This isn't a fault or weakness, it's just a difference between breeds. To get a true comparison of the volume of these testicles would require measuring not only the circumference of the scrotum at the widest point but also measuring the length of the testicles and calculating the volume. The vets performing BSEs on bulls don't take this into account and simply measure by the standard method which results in some bulls being judged to have lower semen production potential than they really have.

I think the importance placed on scrotal size becomes even less relevant when we realise that a typical beef bull produces around 6 billion sperm per day. Obviously at the end of the day only one sperm is needed to successfully fertilise an egg resulting in a pregnancy. As a bull can ejaculate 2-3 billion sperm at once and even the lowly artificial insemination straw contains around a half billion sperm the odds of one sperm successfully fertilising the egg are fairly high. Using simple math and assuming that semen production is directly related to testicle size where a 42cm scrotal measurement bull produces 6 billion sperm per day this would indicate that a bull with a 36cm scrotal would produce 5.1 billion sperm per day. It

would appear to me that this reduction in semen production would be unlikely to impact potential cow pregnancy rate to any extent. We probably run more cows per bull than most people, but even at 35-40 cows per bull in single sire groups over a short 42-day breeding season they are still breeding less than one cow per day on average so actual semen production should not be a limiting factor. The preceding calculation assumed that there is a direct correlation between testicle size and number of viable semen produced which actually does not appear to be the case. Both the Texas Longhorn and Wagyu breeds have smaller scrotal measurements than typical British or Exotic (European) cattle breeds yet have much higher semen quality resulting in more viable sperm per ejaculate. Based on the semen test results we get back every year I would venture to suggest the Luing maybe follows a similar pattern.

In my opinion what has a lot greater influence on herd pregnancy rates is the bull's athleticism and libido. Unfortunately neither of these can be assessed during the BSE. Bulls that are turned out to work in over-fat condition are more like sumo wrestlers than athletes. Over-fat bulls can also have excess fat in the neck of the scrotum which results in the sperm being overheated in the testicles which reduces motility. Many bulls suffer foot and leg problems during the breeding season which reduce their ability to breed cows. Unfortunate accidents can always happen and the physical act of two large animals mating can result in broken bones and damaged muscles. However, I'm convinced that the heavy feeding many young bulls encounter leaves them particularly vulnerable to injury as their feet and legs are relatively under-developed for the increased body weight they are carrying compared to a more natural (slower) growth pattern.

Bulls that are fed heavily from an early age typically have larger scrotal measurements but if this level of feeding has compromised their physical ability to breed a cow the scrotal measurement becomes irrelevant. Perhaps breed Societies/Associations should consider introducing maximum weight/condition for age criteria for sale bulls rather than minimum scrotal measurements to maximize their fertility and breeding soundness?





# FOUNDATION GENETICS

## AT EDIE CREEK ANGUS



**N Bar Emulation EXT • Sire of OCC Great Plains 943G**



**Dixie Erica of CH 1019 • Dam of OCC Great Plains 943G and Paternal Granddam of OCC Legacy 839L**



**OCC Great Plains 943G**



**OCC Dixie Erica 907C • Full Sister to Great Plains**



**MH Titan 752 • Son of OCC Great Plains 943G**



**OCC Dixie Erica 693N • Daughter of OCC Dixie Erica 907C**

OCC Great Plains and OCC Dixie Erica 907C can be found in almost all the pedigrees of our cow herd. In the words of Tim Ohlde, "Great Plains excels his sire (N Bar Emulation EXT) in every EPD", from carcass merit to growth, and his daughters are structurally correct, highly fertile cows with great mothering instincts. Many breeders who focused on maternal quality used Emulation back on Traveler bred cattle with great success. Our goal was to maintain maternal aspects & longevity, which is why we pursued the Great Plains line - keeping with the Dixie Erica 1019 cow (dam of many great OCC bulls) which we could trust. MH Titan & ECA Great One 79Y were both excellent sons of OCC Great Plains. Donor Dam 693N is a great example of longevity, fertility & structural correctness. She is now 18, her dam 907C was 19 and great grand dam 1019 made it to 21!



**"WE ARE STACKING PROVEN BLOODLINES THAT HAVE PRODUCED PROBLEM-FREE INTO THEIR TEENS TO PRIORITIZE FERTILITY AND LONGEVITY."**



**OCC Echelon 857E • Sire of OCC Legacy 839L**



**OCC Legacy 839L**



**ECA 66W • Daughter of OCC Legacy 839L**

**ECA 64B • Daughter of OCC Legacy 839L**



**ECA 5Y • Son of OCC Legacy 839L**

OCC Legacy 839L was truly the foundation of the Edie Creek Program. He was owned by Crowfoot Cattle Co, Hillfire Angus, and B.B.A.R., they bought him and collected semen on him. Legacy was a masculine, hormonally balanced, athletic breeding machine that duplicates his own type in his sons., and leaves broody, deep, easy fleshing cows. We were fortunate to walk several sons in our pastures, as well as use him in our A.I. program. Sire Echelon is a son of the great Dixie Erica of CH 1019 cow, the OCC matron of Emblazon, Focus, Great Plains and many foundational OCC sires. Having lived until age 21, she set the bar for longevity, productivity, and had one of the most refined udder structures of any Angus cow. You will also find the Dixie Erica of CH 1019 cow in our Red Angus cattle. The pedigree of our OCC Easy Red 868A bull has 1019 in it 9 times. We plan on turning back to OCC Legacy in the near future for our herd.



# MATERNAL PERFORMANCE

Cows whose genetic background has focused on increasing size and gain every generation will not produce the most functionally efficient females in a forage-based system.

Having an efficient, moderate maternally-oriented cowherd is an important basis for profitable beef production on grass, especially in a drought scenario when Nature is exerting extreme pressures. This beef-production "Factory" that excels in Maternal traits can be bred to any combination of maternal or terminal sires to produce the kind of calves desired... Maternal performance is measured by more than weights and EPD's:

**HARDINESS & REPEATABILITY/CONSISTENCY:** We stack proven cows in our pedigrees that have raised calves fault free into their teens. Linebreeding to these cows will bring predictability & uniformity.

**FERTILE & FUNCTIONAL:** 85% of this year's sale bulls were born in the first cycle. – Their parents are succeeding under the selection pressure we are applying by way of a short breeding season & the competition factor of multi-sire breeding groups.

**PASTURE CALVING:** Calving on pasture in May without night-checks or close supervision means that calving ease & maternal instincts need to be automatic in our herd.

**SOUND & CORRECT:** Breeding stock are selected only if they and their ancestors have excellent foot and udder structure.

**HIGH STANDARDS:** Our cows extensively graze throughout the winter and nurse their calves for 8-10 months before they are weaned. Our cow herd is a hard-working group of employees that are hired to improve soil health and benefit the ecosystem.

Again, 85% of the, 2022 calf-crop were born in the first 30 days of Calving season, and that is done with a cow herd that grazes until the end of December on pasture with their calves at side. They also spend their winter along side a large commercial cow herd, not pampered or coddled.

**"OPTIMIZING PROFIT WITH MATERNAL EFFICIENCY."**

- Darwin Gork





**59018 STONERIDGE RD  
ANOLA, MB R5L 0H9**



*17th Annual  
Bull Sale*

**MARCH 9, 2024**

**54 BULLS. 11 BRED HEIFERS . OCC SEMEN**