

EDIE CREEK ANGUS



**14TH ANNUAL
RUGGED 2YR OLD
BULL SALE**

MARCH 13

2021 ASHERN
AUCTION MART
SATURDAY 1PM

PLEASE JOIN US IN ASHERN OR ONLINE

DVAuction
Broadcasting Real-Time Auctions

**MODERATE - MATERNAL
EASY CALVING - EASY FLESHING**

THE BOUW FAMILY



Marilyn and Herman Bouw



Stefan, Kendra, Jaxon(11), Mikaya(9), Alexa(7), Micah(5)



Jonathan, Eileen, Lucie(8), Karis(5), Lukas & Kian (3)



BULL SALE

Location: Ashern ICCA Auction Mart:

On Auction Mart Road just south of Ashern
off Hwy #6.

On Offer: 53 2yr Old Bulls

40 Black Angus Bulls

9 Red Angus Bulls

4 FleckAngus Bulls

We look forward to seeing you at the sale on March 13th at 1pm! Give us a call if you have any questions or would like to come see the bulls before hand.

JONATHAN: (204) 471-4696

STEFAN: (204) 232-1620

Auctioneer - BUDDY BERGNER: (204) 768-2669

DVAuction
www.dvauction.com

Watch & Bid online for FREE!

Can't make the sale?
Let DVAuction bring the sale to you!
Busy during the sale?
Let DVAuction represent your bid!

Visit www.dvauction.com and Register!
It's as easy as 1, 2, 3...

1. Create an account at www.dvauction.com under the "create new account" tab
2. Apply for bidding by clicking "apply for bidding" in the upper left corner of your screen, at least 24 hours prior to the auction
3. Tune into the sale and make your purchases!

For Questions About DVAuctions Please Contact:
Sarah Buchanan (306) 681-5340

***VIDEOS** of all the sale bulls are available. Please head to our website (www.ediecreekangus.com) for links to the videos and DVAuction Bidding.

If for some reason you cannot attend the sale, please register to bid on DV Auctions, or give us a call if you would like to be on the phone.

Trucking

For our Canadian Customers outside of Manitoba we will assist in covering the trucking bill. You pay the first \$200/ bull, and we will cover the rest. Delivery in Manitoba is free.

Insurance

The animal becomes the responsibility of the purchaser as soon as it is sold. Insurance will be available sale day.

Come on Down Early!

Get a real good look at the Bulls.

WELCOME TO THE 14TH ANNUAL EDIE CREEK ANGUS 2-YEAR OLD BULL & FEMALE SALE!

Hello in the most sincere meaning of the word & thank you very much for your interest in our program. Author Bill Bryson asserts in his book "Mother Tongue" that the word "hello" comes from Old English *hál beo þu* ("Hale be thou", or "whole be thou"), meaning a wish for **good health**, a formal greeting that is more meaningful after the events of 2020!

To those here for the first time, thanks for your interest in our program. To our great customers, thanks very much for your support of our breeding program in the past.

Bull sale season is something we look forward to: getting genetics into our customers' hands that improve quality of life by increasing maternal function & calving ease as well as improving their bottom-lines through the measurable benefits that our genetics provide is our utmost goal! We've heard from many customers that these goals have been met by using Edie Creek Genetics.

While many societal norms were questioned in all the uncertainty of the past year, the importance of **nutrient-dense** food, and secure access to it (think: "local-food") was highlighted as demand grew amidst supply-chain hiccups. Our GrassFinished & GrassFed Beef enterprise saw sales increase +30% direct to consumers with zero advertising.

Beef cattle have a **great story to tell**: Well-managed grazing turns grass from an un-palatable ground cover on vast tracts of non-cultivated land, into a nutrient-dense "superfood" that can help **reverse the effects** of the industrialized food ingredient industry (hi-sugar, lo-fat, fast & easy foods filled with synthetic compounds) which has been complicit in the nutritional deficiency & health crises that made society more susceptible to the effects of the past year's pandemic. Planned grazing builds soil Organic Matter & stabilizes Carbon too!

Producing Beef cattle is a business arena not for the faint-of-heart or "dull-of-pencil". Beef is **produced globally** by many who have lower land prices, cost of living/labour expenses, & they have access to the same technology we do, now that everything is available online. This means we need to do everything we can to **reduce costs & harness solar energy** — the FREE resource we all can access. To quote Jim Gerrish: "The more petroleum and iron you put between the sun's solar energy and your cow's belly, the less profitable you will be."

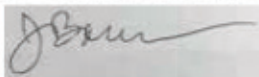
Low-input maternal cowherds mated to terminal-focused bulls can optimize a beef production system. They keep efficient mama-cows that are hardy & cheap to run but can also raise very good cross-bred calves that capture all the advantages of hybrid vigour & fit the feedlot market. We see that our role in this production system is to provide seedstock that can **reliably** produce those efficient mama cows. Our focus is on the **maternal strain** of beef production, and we manage accordingly: our calves are born on pasture in May (90% born in the first 30 days of calving last year) unassisted with no night checking. Females & steers are raised on a **no-starch, Forage-only diet** to ensure the hardest & most fertile cattle are selected. Steers go on to be Grass-Finished and sold direct-to-customer (52 head of GrassFed & GrassFinished cattle marketed in 2020). Yearling heifers are exposed to bulls for 42 days so that **only the most fertile** females get bred and enter our cowherd. The cowherd sees Registered Angus bulls for only 30 days, followed by 21 days of Fleckvieh bulls on cleanup. Multi-sire pastures (followed by DNA testing of the calves' parentage) add another layer of fertility screening, as only **the most fertile, virile bulls** get the privilege of passing along their DNA.

There is also a growing trend in retail to **reduce the size of beef carcasses** since the high-value steaks from 900+ lb. beef animals create premium cuts that are too big (& therefore too expensive) for the average consumer, driving further **the trend towards chicken & pork!** These oversized steaks are either cut thinner, which makes for an easily overcooked steak, or results in the retailers needing to trim premium steaks to smaller size, changing otherwise-valuable chunks of prime beef into lower-value trim! There is a new program in the US incentivizing carcasses that weigh less than 750 lbs. in order to meet the specifications of the "Certified Thick Steaks". Although consumer & market trends lag in Canada from when they're birthed in the US, **moderate-framed cattle** will be in stronger demand in the near future here as well.

Check out this article: <http://bit.ly/steaks2big> - "What are Big Carcasses doing to the Future of the Beef Industry?"

We invite you to come take a look at the Cowherd behind the Bulls selling. Feel free to call if you have any questions about our breeding program.

Jonathan Bouw



SALE DAY HEALTH & SAFETY:

- It is very important to us that we serve our customers in this important “Agricultural Commerce Service” while keeping them safe & protecting public health. As such, we will ask all of our customers in attendance to follow all current public health guidelines, including respecting physical distancing, proper wearing of masks, & enhanced sanitation (hand washing or sanitizer).
- Current regulations allow only **35-40 customers to enter the Auction Mart in person**, which is better than none, but less than we’d like! We unfortunately have to ask that only one person from each party be admitted inside for the Sale, although pre-sale viewing in the pens will be available for more persons because that occurs in an outdoor setting.
- Currently, health guidelines do not permit public food services to be a part of the sale day, so unless restrictions are lifted, we unfortunately **won’t be able to offer you our usual hospitality** on sale day.
- We welcome you to come to our farm located East of Winnipeg in Anola, and assess the bulls in their home environment. This also lends itself to **inspection of the dams**, which is always a worthwhile aspect of researching the genetic direction of your cowherd! Pre-sale inspection would give you the in-depth insight you need to make a confident choice when bidding online through DV Auction.
- You are also welcome to preview the bulls on Friday March 12th in Ashern or on sale-day morning prior to the sale. If the Auction barn happens to be at capacity, you could bid online from your smartphone, **or tether your smartphone to a tablet device** for a more comfortable viewing & bidding experience.
- We will also have a number of **sale day phones** available, and can arrange to be on the phone with you for the lots you are interested in.
- ****If the capacity guidelines are increased, or regulations regarding food services change**, we will make **those announcements** on our Website www.ediecreekangus.com and Facebook & Twitter accounts, found at: @ediecreekangus
- Regulations may change before sale day, but we **will** conduct a sale live & online: DVAuction.com/events/116692 and we’ll get the same rugged Edie Creek Angus bulls into your herds like always!
- We ask that you not attend the sale if you feel unwell. Please pursue the other bidding options available if that is the case.
- **If you are interested in purchasing a bull, and have any concerns or questions about attending the sale or bidding online, PLEASE give us a call, we would love to help you out. We will make sure you get what you are hoping for!**



The Edie Creek Angus Breeding Program:

- When breeding for cows that will thrive on a low input system, extremes need to be avoided and balance needs to be attained. Stacking bloodlines that have produced problem-free into their teens is our strategy to avoid extremes & prioritize fertility.
- We steer clear of mainstream Angus lines that have propagated the most popular bull of the day. Show-ring fads are avoided.
- Cows need to travel and graze to find feed and water. No lazy cows waiting on us to take care of them.
- Genetic Consistency. Within the different sire groups you will find many 3/4 brothers.
- Truly a moderate cow size. Our cow herds average weight is 1225lbs.
- Bulls never have hair or feet trimmed. They are not fed hard to cover holes.
- Heifers are developed on a forage-only diet and are required to breed as yearlings with a 42 day exposure to bulls.
- Cows are never fed any grain, They have a Forage-only diet. They are exposed to Angus bulls for 30 days, then Fleckvieh bulls are turned out. For a total of 50 days exposed to bulls. This ensures that only the most fertile females produce offspring that we select purebred parent stock from.
- Our breeding goal is to make the cow-calf enterprises of our customers as profitable per acre as possible, by creating cows that efficiently raise calves, are reliably repeatable & require minimal replacements (longevity).

50 RUGGED
2 YEAR OLD
BLACK & RED
ANGUS BULLS
+4 FLECKANGUS BULLS

MARCH
13
2021

EDIE CREEK



ANGUS

STEFAN
(204) 232-1620

JONATHAN
(204) 471-4696

www.ediecreekangus.com

AT EDIE CREEK ANGUS
we are focused on
— BREEDING —
maternal genetics
that are *proven*
to fit a **low-input**
environment & management
practices based on maximizing
profit per acre of grass

EDIE CREEK
BIG TIME
848C

FORAGE BASED

MODERATE

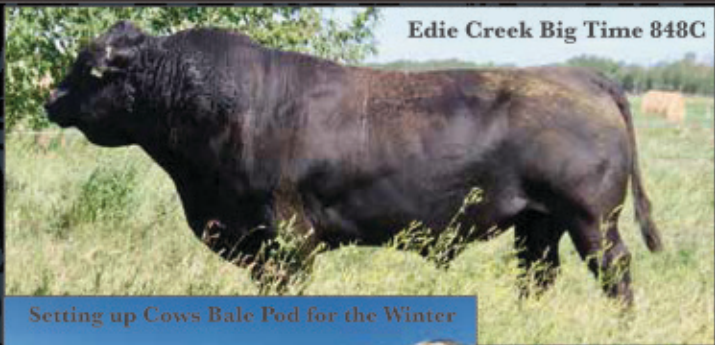
MATERNAL

EASY CALVING

OCC
EASY RED
868A

2020 at a Glance

Edie Creek Big Time 848C



Setting up Cows Bale Pod for the Winter



Big Time 848C X Full Bore 730

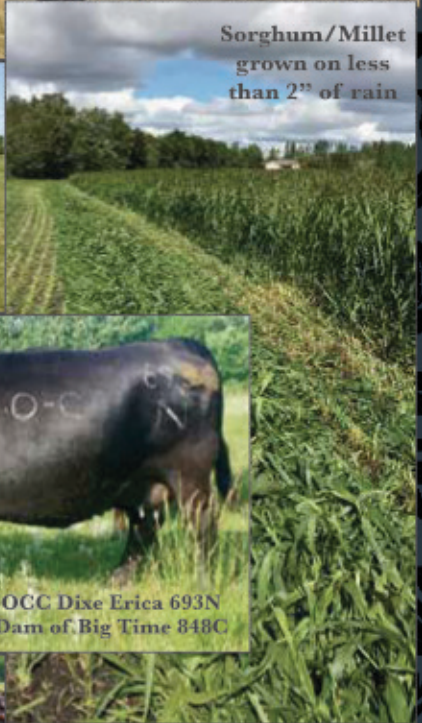


ECA Frances 126H

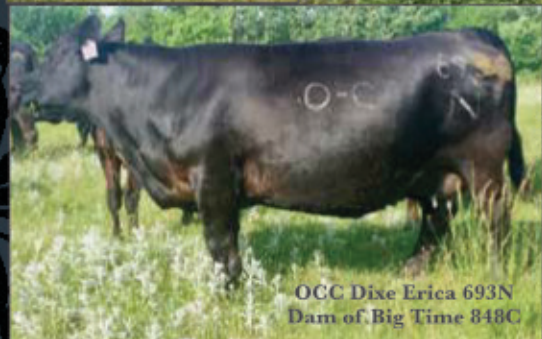
3yr old Easy Red dtr with her Grazer 8E hfr calf



Sorghum/Millet grown on less than 2" of rain



OCC Dixe Erica 693N
Dam of Big Time 848C



Yearling Heifers

REFERENCE SIRE



NCC FULL BORE 629

15/02/2010 REG#2064227 IMP 0730X

Sire: COLE CREEK FULL BORE 730

COLE CREEK FULL BORE 730

Dam: NCC JUANADA 2025

OCC JUANADA 901K

CE
**
UDDER

FORAGE

EPD's: BW: +1.1 WW: 47 YW: 80 MILK: 25 CED: +3

We purchased NCC 629 to replace his sire Full Bore. He is the result of a father daughter mating, tightening the predictability of his offspring. He is a taller bull, whose daughters will likely make 1300-1400 lb cows.

Ryan Neiman, Neiman Cattle Co. formerly owned Full Bore 730: "His sons are masculine, wide based massive cattle with added length and muscle. The bulls cover cows with lots of libido and athleticism while maintaining good flesh. More impressively his daughters are extremely productive calf raising machines with good udders, maternal instinct and fertility"



MH TITAN 752

MH Melisa 357

18/04/2007 REG#1945581 IMP 752T

Sire: OCC GREAT PLAINS 943G

OCC HOMER 650H

Dam: MH MELISA 357

MH MELISA 1147

CE

UDDER

FORAGE

EPD's: BW: +0.8 WW: 27 YW: 47 MILK: 20 CED: +9

MH Titan 752 will increase fertility and longevity in any pedigree he is in. He bred 40+ cows as a 11yr old bull, and had a small breeding group as a 13yr old. His breeder, Monte Howrey, said "Titan: the older he gets, the more I appreciate him. Just no holes in him: feet are great, Athletic, incredible disposition. Fertile and highly intelligent...he's probably the most USEFUL bull I have ever bred." Titan comes from the same cow family as DDA Emblazon 27C. We don't think you'll find better feet on a mature bull than Titan's, they are impeccable. Titan also tested "TT" for Leptin in the Quantum DNA test, for those of you who track that.

REFERENCE SIRE



OCC EASY RED 868A

05/09/2013 REG# 1895053

Sire: RED OCC EASY RED

RED OCC RED ROCK 864U

Dam: RED OCC VANESSA 797Y

RED OCC VANESSA 929T



EPD's: BW: -2.2 WW: 15 YW: 41 MILK: 16 CED: +8

OCC Easy Red 868A is a one of a kind bull in Canada. We have found that Easy Red does phenotypically what we are trying to do with our Black Angus program in a linebred, genetically prepotent RED package! Easy Red will fix what the Red Angus breed needs fixing: udder and foot quality, as well as natural muscling ability & ease of fleshing on forage alone. He traces 9x to Dixie Erica 1019, the foundation cow of the black program at OCC and 5x to PCC Colorado Hobo. Co-owned with Myhre Land and Cattle, now deceased. Also Leptin Genotype tested as "TT".

CE

UDDER

FORAGE



EDIE CREEK BIG TIME 848C

20/06/2015 REG# 1693232 ECA 848C

Sire: OCC BIG TIME 746Z

OCC HEADLINER 661H

Dam: OCC DIXIE ERICA 693N

OCC DIXIE ERICA 907C

CE
**
UDDER

FORAGE

EPD's: BW: +3.8 WW: 44 YW: 66 MILK: 20 CED: -2

We can't introduce 848C without telling the story of his now 17-yr old Dam, 693N, the top Headliner daughter raised at OCC, from whom Ohlides used numerous sons and daughters. 693N epitomizes maternal efficiency in a structurally sound package: her Dam was 19 and Granddam was 21. Going forward, we intend for every Edie Creek Angus pedigree to contain 693N at least once, she is that good. 848C has been a stellar breeder, stamps functional forage-efficient cattle with classic Angus heads, and is carrying forward the OCC strain at Edie Creek Angus. Now owned by Vee Tee Angus.

AI S I R E S



RED CALVO NEBULA 67C

15/06/2015 REG#1957561 IMP 67C

Sire: RED BECKTON NEBULA P P707

RED BECKTON NEBULA P P707

Dam: RED CALVO ROSE 8Z

RED BECKTON ROSE U272 JJ

CE *****
UDDER *****
FORAGE ****

EPD's: BW: -2.9 WW: 35 YW: 69 MILK: 22 CED: +13

Nebula 67C is owned by Gemstone Cattle Co., Gemstone Alberta. We were happy to be able to purchase a semen interest in the bull, and use him AI back on our Easy Red heifers. We are very happy with the calves we have so far. His sons in this sale have great rib shape and fleshing. They have been a great cross on our Easy Red daughters.

"67C is a double bred P707 son out of a great Beckton cow. 67C stays fat all year long on grass and hay. We are very pleased with the natural fleshing ability of his calves." - Gemstone Cattle Co.



SINCLAIR PLAINS BOSS 5B02

20/06/2015 REG#1693232 ECA 848C

Sire: SINCLAIR PATRIARCH 3B47

N BAR EMULATION EXT A1747

Dam: SINCLAIR LADY IDA 7V19

SINCLAIR LADY IDA 04F3 B154

CE ***
UDDER ****
FORAGE ****

EPD's: BW: +0.1 WW: 50 YW: 98 MILK: 20 CED: +3

Plains Boss is owned by GBT Angus in SK and Sinclair Cattle Co. We used him AI on some of our heifers in 2019. Plains Boss is heavily line bred, tracing 45 times to Emulation 31. Emulation cattle are well known for improving feet, udders and fertility. There are 5 sons in this sale. 3 of them are 3/4 brothers.

REFERENCE SIRE



SINCLAIR SQUIRT 6TT10

31/01/2016 REG#2013659 IMP 16100

Sire: SINCLAIR SUN DIAL 4TL2

SINCLAIR EMULATION XXP

Dam: SINCLAIR LADY IDA 4XX50 70C7

SINCLAIR LADY IDA 70C7 2V11

CE

UDDER

FORAGE

EPD's: BW: -2.4 WW: 41 YW: 82 MILK: 26 CED: +9

We bought Squirt out of the Sinclair program in Wyoming to cross back on some of our OCC bred cows. He brings a linebred Emulation pedigree, terrific calving ease, yet maintains good growth. He has averaged 74lbs on his Bull calves and 65 on his heifers. Granddam 2V11 is an OCC Great Plains daughter, which brings the greatness & reliability of the 1019 cow that anchors the OCC program.

**** All Angus Bulls On Offer**

**Are Born In the First 31 Days
of Our Calving Season**

**In 2020 - 80% of the calf crop
was born in the 1st Cycle.
90% born in 1st 30 days!**

**This demonstrates the fertility of
the Edie Creek Angus cowherd
fed Zero grain, pellets, or DDGs
in their diet, on Forages Only.**

EDIE CREEK BIG TIME 34G



24/04/2019

REG# 2131210

ECA 34G

Sire: EDIE CREEK BIG TIME 848C

OCC MISSING LINK 830M

Dam: EDIE CREEK 231 PEARL 40A

CROWFOOT L PEARL 4804P

BORN 1ST
CYCLE?



CE

UDDER

BW: 77 DAM'S BW: 61 DAM WEIGHT: 1170

FORAGE

CED: +5 BW: +0.6 WW: 33 YW: 52 MILK: 21

Cow Bull. 34G is deep, easy fleshing and comes from a great cow. Both maternal and Paternal Grand dams raised calves into their teens. Our cows are never fed grain. If you would like to run a forage-based program, this bull will help you move along down that path. This bull expressed strongly masculine traits from a very young age, good hormonal balance & that herd bull presence.

EDIE CREEK BIG TIME 85G



04/05/2019

REG# 2131216

ECA 85G

Sire: EDIE CREEK BIG TIME 848C

OCC LEGACY 839L

Dam: EDIE CREEK PRIDE 64B

CROWFOOT PRIDE 5893R

BORN 1ST
CYCLE?



CE

**

UDDER

BW: 96 DAM'S BW: 69 DAM WEIGHT: 1270

FORAGE

CED: -1 BW: +3.8 WW: 33 YW: 53 MILK: 20

Cow Bull. Changer bull. His dam 64B is a gorgeous wedge shaped, Bonsma- type cow. Her dam (5893R) has the same build, and is bred to calve again this year as a 16yr old cow. The Pride cow family are more lively when we are getting their calves tagged. We weigh and tag all calves at birth, and the Pride cows give us a bit of a hard time, but do let us get it done. If you want cows that are built like 64B, buy this bull.

EDIE CREEK BIG TIME 102G



3

07/05/2019

REG#2131274

ECA 102G

Sire: EDIE CREEK BIG TIME 848C

OCC MISSING LINK 830M

Dam: EDIE CREEK 80U ERELITE 3A

EDIE CREEK ERELITE 80U

BORN 1ST
CYCLE?



CE

**

UDDER

BW: 88 DAM'S BW: 78 DAM WEIGHT: 1365

FORAGE

CE: -2.0 BW: +3.5 WW: 46 YW: 78 MILK: 18

Cow Bull. 102G is a 3/4 bother to the lot 1 bull. You will not find many other bulls on offer in Canada with the popular Ohlde bull OCC Missing Link 830M in their pedigree. 102G is a tick bigger than his Big Time brothers. He gets that from his dam (3A), a power cow who was 140lbs heavier than our cow herd average weight of 1225lbs taken at preg check this past November.

EDIE CREEK BIG TIME 125G



4

11/05/2019

REG#2131281

ECA 125G

Sire: EDIE CREEK BIG TIME 848C

EDIE CREEK 839L LEGACY 5Y

Dam: EDIE CREEK KONA 84B

EDIE CREEK ML KONA 30Y

BORN 1ST
CYCLE?



CE

**

UDDER

BW: 87 DAM'S BW: 79 DAM WEIGHT: 1430

FORAGE

CE: +2 BW: +2.0 WW: 42 YW: 61 MILK: 22

Cow Bull. 125G comes out of a cow that is always one of our top 5 fattest cows. Her weight of 1430 is 200lbs more than the herd average, and she doesn't get that from any extra frame size! She also knows how to raise calves, shown by her Elite Dam status with the Angus Association. This bull would work well in a grass fed beef operation. Great Granddam 83U retired at age 11, and was an excellent productive, yet easy fleshing cow whose calves always made the cut.

EDIE CREEK FULL BORE 19G



21/04/2019

REG#2122123

ECA 19G

Sire: NCC FULL BORE 629

EDIE CREEK GREAT ONE 79Y

Dam: EDIE CREEK FLORA 1B

EDIE CREEK 38J FLORA 75Z

BORN 1ST
CYCLE?



CE

**

UDDER

BW: 84 DAM'S BW: 62 DAM WEIGHT: 1465

CED: +4 BW: +0.3 WW: 51 YW: 86 MILK: 22

FORAGE

Cow Bull. We purchased Full Bore 629 from Ryan Neiman in Wyoming to continue the Cole Creek Full Bore line. 629 is the result of Full Bore being bred to a Full Bore daughter. 629 adds bone and frame size. Lot 5 will sire daughter that will make 1400lb cows. His dam (1B) is as good a cow as you could ask for. She is double bred to N Bar Emulation EXT. Her calves are born first cycle every year, she has tidy, hard feet and calves are at the top of the pen every year. This bull is a stud!

EDIE CREEK FULL BORE 28G



23/04/2019

REG#2122131

ECA 28G

Sire: NCC FULL BORE 629

MH TURBO 780

Dam: RFFL PRICILLA 3W

MH PRICILLA 716

BORN 1ST
CYCLE?



CE

**

UDDER

BW: 83 DAM'S BW: N/A DAM WEIGHT: 1260

CED: +7 BW: -0.1 WW: 48 YW: 75 MILK: 27

FORAGE

**

Cow Bull. 28G was the heaviest weaned calf in the entire 2019 calf crop. 3W weaned 53% of her body weight when she weaned 28G in 2019. The Full Bore 629 sons exhibit some "hybrid vigour"—they are purebred Angus bulls, but when we take two line bred (highly concentrated) bloodlines and combine them (Cole Creek x OCC), we see a pop in weaning weight. This bull will also pass on slightly more frame & milk in his daughters than most of our bulls.

EDIE CREEK FULL BORE 91G



05/05/2019

REG# 2123490

ECA 91G

Sire: NCC FULL BORE 629

OCC EMBLAZON 854E

Dam: EDIE CREEK JUANADA 61Y

OCC JUANADA 737L

BORN 1ST
CYCLE?



CE

UDDER

BW: 94 DAM'S BW: 69 DAM WEIGHT: 1185

FORAGE

CED: +2 BW: +1.7 WW: 51 YW: 79 MILK: 24

Cow Bull. 61Y is a direct OCC Emblazon daughter, not sure you will find another one in Canada. She has had a great career of putting bulls in this sale. This could be the best one she has produced yet. She weaned 91G at 57% of her body weight and has a weaning ratio of 8@109. We used this bull in a multi sire breeding group in 2020. This is a bull we should be keeping to use ourselves. 91G is a really well made bull, with extra depth, fleshing and a strong top line. This would be my (Stefan's) pick of the bulls on offer. Selling 1/2 Interest and 1/2 Possession - Give us a call if you have questions.

EDIE CREEK FULL BORE 136G



13/05/2019

REG# N/A

ECA 136G

Sire: NCC FULL BORE 629

SHOSHONE FRANZ 419

Dam: MH MELISA 633

MH MELISA 247

BORN 1ST
CYCLE?



CE

UDDER

BW: 84 DAM'S BW: 58 DAM WEIGHT: 1240

FORAGE

CED: N/A BW: N/A WW: N/A YW: N/A MILK: N/A

Cow Bull. 136G is not registered, but it could be done in the American Angus herd book if requested. Dam is a feminine cow, with a nice wedge build. Her udder is perfect with pinky sized teats. She has emerged as a favourite out of the great heifers we bought from Monte Howrey in South Dakota. Monte focused on the mother cow: no propping up cows that needed to be fed at a feed bunk to come back pregnant. Cows needed to stay out grazing on pasture and bring home a good calf every fall.

RED EDIE CREEK EASY 2G



13/04/2019

Reg#2122057

ECA 2G

Sire: RED OCC EASY RED 868A

RED EDIE CRK NORSEMAN KING 91T

Dam: EDIE CREEK DUCHESS 109C

CROWFOOT DUCHESS 3129N

BORN 1ST CYCLE?



CE

UDDER

BW: 75 DAM'S BW: 74 DAM WEIGHT: 1305

FORAGE

CED: +10 BW: -2.6 WW: 20 YW: 35 MILK: 23

Heifer Bull. Dam is a gorgeous-made black cow. She goes back to a great OCC Joker donor - 3129N. This bull bred our Red Angus Heifers in 2020. 2G has many qualities that will fix what is missing in many Red Angus cows. Natural fleshing and muscling on a tidy foot. This is the last year we will be offering naturally sired OCC Easy Red 868A sons. His muscle expression is all natural, making him very impressive. See inset picture of lot 17 to see 3129N's OCC Legacy daughter, the beautiful ECA 66W cow.

Selling 1/2 Interest and 1/2 Possession - Give us a call if you have questions.

RED EDIE CREEK EASY 16G



20/04/2019

Reg#2122120

ECA 16G

Sire: RED OCC EASY RED 868A

RED BUF CRK HOBO 1961

Dam: RED RIDGE SIDE MRS BC HOBO 13A

RED RIDGE SIDE LUCY 13R

BORN 1ST CYCLE?



CE

UDDER

BW: 85 DAM'S BW: 87 DAM WEIGHT: 1345

FORAGE

CED: +6 BW: -1.5 WW: 24 YW: 47 MILK: 20

16G has had two full brother in past sales, one going to Hans Myhre, and the other purchased by Kendale Friesen. 13A is a very fertile cow. She has a bit more size and has calved first cycle every year, while also raising two sets of twins on her own. These Easy Red sons will all work on outfits that are running low input programs & operations that want to reduce the feed expense in their cow herd. 16G will make excellent broody cows, and the steer calves will grow!

RED EDIE CREEK NEBULA 67G



11

30/04/2019

REG#2122389

ECA 67G

Sire: RED CALVO NEBULA 67C

RED OCC EASY RED 868A

Dam: RED EDIE CREEK LUCY 14D

RED RIDGE MRS BC HOB0 13A

BORN 1ST
CYCLE?



CE

UDDER

BW: 78 DAM'S BW: 73 DAM WEIGHT: 1240

FORAGE

CED: +10 BW: -2.5 WW: 31 YW: 61 MILK: 22

Heifer Bull. 67G is a solid bull. His dam is a good young Easy Red daughter who is also a full sister to the Lot 10 bull. The sire, Nebula 67C, is owned by Gemstone Cattle Co in AB, and this is their description of Calvo Nebula 67C: "67C is a double bred P707 son out of a great Beckton cow. 67C stays fat all year long on grass and hay. We are very pleased with the natural fleshing ability of his calves." Lot 11 is an exciting next-step evolution of our Red Angus program: Moderate - Maternal - Easy Calving - Easy Fleshing

RED EDIE CREEK NEBULA 15G



12

20/04/2019

REG#2122119

ECA 15G

Sire: RED CALVO NEBULA 67C

RED OCC EASY RED 868A

Dam: RED EDIE CREEK LUCY 145E

RED EDIE CREEK LUCY 54C

BORN 1ST
CYCLE?



CE

UDDER

BW: 71 DAM'S BW: 82 DAM WEIGHT: 1155

FORAGE

CED: +11 BW: -2.6 WW: 36 YW: 71 MILK: 23

Heifer Bull. Lot 12 is a 3/4 Brother to lot 11. He was a stand out as a calf and weaned out at 49% of his dams weight. The Lucy cow family has done well for us, with Lots 11,12 and 13 being out of Lucy cows. Lot 12 is the most physically impressive 67C son in this sale. We used 67C AI on our heifers for two years. 67C has worked better than we expected on our OCC Easy Red daughters—he seems to have maintained the depth of body of Easy Red with a bit more power!

WISH YOUR COW HERD WORKED HARDER FOR YOU??

Our bulls are bred with generations of fertility, fleshing ability, longevity & sire beautiful udders.

Edie Creek Angus Cow Herd Bale Grazing



Did You Know?

- **Reproduction** is the most important factor affecting profitability
- Reproduction is **5X** more important than growth rate, and **10X** more important than carcass quality when it comes to profit.
- **Body Condition** has the greatest impact on reproduction. (*"Edie Creek bulls will sire Easier Fleshing Cows that can hold Body Condition"*)
- Thin cows are only **half** as productive as those in optimum condition
- Every missed breeding cycle represents a 42 lb loss in weaning weight.

Data provided by:
Beef Cattle Research Council
www.beefresearch.ca



ECA 95G - Pictured as a young calf.
Weaned at 52% of Cow weight. He sells as Lot 18

EDIE CREEK TITAN 108G



08/05/2019

REG# 2128592

ECA 108G

Sire: MH TITAN 752

CAR CHINNOOK 786

Dam: MH FRANCES 621D

MH FRANCES 327

BORN 1ST
CYCLE?



CE

UDDER

BW: 77 DAM'S BW: N/A DAM WEIGHT: 1015

CE: +10 BW: +0.2 WW: 34 YW: 70 MILK: 23

FORAGE

Heifer Bull. This is one of the nicest Heifer Bulls in the sale. His dam comes out of the great Shoshone Frances cow family and weaned this bull off at 52% of her body weight. 108G has a pedigree stacked with generations of cattle bred for the sole purpose of maternal performance. His sire was an aggressive breeder who bred cows last year at 13yrs old. You will not find a better foot shape than Titan had. Lot 13 is a 3/4 brother to lot 16. With 327 and 329 being full sisters out of MH Frances 720 cow

EDIE CREEK TITAN 49G



27/04/2019

REG# N/A

ECA 49G

Sire: MH TITAN 752

SHOSHONE FRANZ 419

Dam: MH MELISA 66

MH MELISA 211

BORN 1ST
CYCLE?



CE

UDDER

BW: 67 DAM'S BW: 55 DAM WEIGHT: 1125

CE: N/A BW: N/A WW: N/A YW: N/A MILK: N/A

FORAGE

Heifer Bull. He is a really smooth-shouldered dude. He will sire a set of feminine moderate-framed cows. Not Registered, but can be done in American Angus assoc. if requested. This bull is a perfect blend of the three strains of the Angus breed we have been stacking. OCC, Emulation and Shoshone. Melisa 66 is an ideal cow to work with when tagging and weighing her calves. Attentive and respectful.

EDIE CREEK TITAN 42G



25/04/2019

REG#2122138

ECA 42G

Sire: MH TITAN 752

DDA EMBLAZON 27C

Dam: MH MELISA 39

DDA MELISA 545

BORN 1ST
CYCLE?



CE

UDDER

BW: 89 DAM'S BW: N/A DAM WEIGHT: 1225

CE: +8 BW: +2.0 WW: 19 YW: 41 MILK: 20

FORAGE

Cow Bull. Here is a great example of linebreeding. 42G is triple-bred to the great Melisa 545 cow. If you want to know what his daughters will look like, take a look at the picture of the 545 cow. We use Linebreeding to increase predictability in our gene pool. What's the best way to find out if a cow has flaws? Line breed to her and you will find out real quick if the udders and feet stand up. Monte put his foundation cows to the test. 545 is well proven, and we are excited to offer this bull. Take advantage of this opportunity to reduce the guess work in your replacement heifers.

EDIE CREEK TITAN 26G



22/04/2019

REG#2122130

ECA 26G

Sire: MH TITAN 752

COLE CREEK CEDAR RIDGE IV

Dam: MH FRANCES 329

MH FRANCES 720

BORN 1ST
CYCLE?



CE

UDDER

BW: 80 DAM'S BW: N/A DAM WEIGHT: 1535

CE: +9 BW: +0.0 WW: 24 YW: 51 MILK: 23

FORAGE

Heifer Bull. He is a well-muscled Titan son. This past year was the driest on record here. Grass didn't grow much past June. The 329 cow went to a rented pasture & stayed fat on mostly dead swamp grass and cattails. We couldn't believe how good of shape she came home in. 329 is a maternal sister to the dam of lot 18, check out the picture of their dam, Frances 720 on Lot 18's page. Cedar Ridge IV does downgrade udders in our experience. The udder on 329 hangs lower than we prefer, but she has good small teats.

EDIE CREEK TITAN 94G



17

06/05/2019 | REG# 2123493 | ECA 94G

Sire: MH TITAN 752

OCC LEGACY 839L

Dam: EDIE CREEK 839L DUCHESS 66W

CROWFOOT DUCHESS 3129N

BORN 1ST
CYCLE?



CE

UDDER

BW: 76 DAM'S BW: 76 DAM WEIGHT: 1305

FORAGE

CED: +10 BW: -0.8 WW: 27 YW: 43 MILK: 22

Heifer Bull. 66W is a gorgeous OCC Legacy daughter. The 3129N cow was a daughter of OCC Joker 620J with a weaning record of 12 @ 100. 66W has had a weaning index of 103 on 10 calves. 9 of her 10 calves have been born first cycle. If you take a look at lots 41 & 42 in this sale, you will notice they are sired by a full brother to this lot 17 bull. The 66W cow embodies what our program is built on. 94G will leave behind some excellent daughters, his pedigree is backed by great cows.

EDIE CREEK TITAN 95G



18

06/05/2019 | REG# 2123494 | ECA 95G

Sire: MH TITAN 752

COLE CREEK FULL BORE 730

Dam: MH FRANCES 614

MH FRANCES 720

BORN 1ST
CYCLE?



CE

**

UDDER

BW: 83 DAM'S BW: N/A DAM WEIGHT: 1220

FORAGE

CED: +7.5 BW: +1.6 WW: 40 YW: 72 MILK: 24

Cow Bull. 95G had a WW index of 122 and YW ratio of 106. He had a maternal brother in last years sale that sold to Reed Rigney. Page 18 of this catalog has a picture of 95G and his dam. 95G was weaned at 52% of his dams weight. With Full Bore in his pedigree 95G brings a touch more size and power than the rest of his Titan brothers. Take a look at the picture of 720. She is still going as a 14yr old cow. 720 is an OCC Great Plains daughter, making her a paternal sister to Titan. Predictability bred in.

EDIE CREEK PLAINS BOSS 57G



28/4/2019

REG# N/A

ECA 57G

Sire: SINCLAIR PLAINS BOSS 5B02

MH TUBBY 56

Dam: EDIE CREEK JUANADA 82E

EDIE CREEK JUANADA 20B

BORN 1ST
CYCLE?



CE

**

UDDER

BW: 90 DAM'S BW: 72 DAM WEIGHT:

FORAGE

CED: N/A BW: N/A WW: N/A YW: N/A MILK: N/A

Cow Bull. Not Registered. Could be done if requested. Plains Boss is a bull bred by Sinclair Cattle co in Wyoming and owned by GBT Angus in Saskatchewan. We used him AI on heifers. Plains Boss brings a tightly line bred Emulation pedigree. Tubby was a cow making Lodge of Wye son. He bred cows for us past 10yrs of age. Lodge of Wye is considered one of the greatest bulls to ever come out of the Wye breeding program. 57G has extra rib and fleshing ability. He will sire low input, sound structured cows.

EDIE CREEK PLAINS BOSS 52G



27/4/2019

REG# N/A

ECA 52E

Sire: SINCLAIR PLAINS BOSS 5B02

OCC HONESTY 962H

Dam: EDIE CREEK REV ROSE 9E

XO CROWFOOT REV ROSE 8816U

BORN 1ST
CYCLE?



CE

**

UDDER

BW: 82 DAM'S BW: 82 DAM WEIGHT: 1165

FORAGE

CED: +2 BW: +2.2 WW: 40 YW: 81 MILK: 20

Cow Bull. Not registered. Could be done if requested. Dam, ECA 9E is the result of embryo work done a few years back with some old OCC semen we acquired from John Setrakov (co-owner of the OCC Legacy 839L bull). There are only 2 other OCC Honesty Daughters in Canada, and we own one of them. Pictured is OCC Jockey 655J, He is a full brother to OCC Honesty 962H, and has been used heavily in grass-based systems in Argentina. This 52E bull has a big crest and shows good hormonal balance with his curly hair.

EDIE CREEK PLAINS BOSS 60G



28/04/2019

REG# N/A

ECA 60G

Sire: SINCLAIR PLAINS BOSS 5B02

MH TITAN 752

Dam: EDIE CREEK CAROLINE 13E

EDIE CREEK CAROLINE 61Z

BORN 1ST
CYCLE?



CE

UDDER

BW: 73 DAM'S BW: 83 DAM WEIGHT: 1205

FORAGE

CED: N/A BW: N/A WW: N/A YW: N/A MILK: N/A

Heifer Bull. Not Registered. Could be done if requested. This bull looks like a copy of his sire. He was born first cycle, has been developed slowly and is ready to cover cows. The Caroline Cow family has put many bulls in this sale. Very good udder quality genetics here.

EDIE CREEK PLAINS BOSS 84G



04/05/2019

REG# N/A

ECA 84G

Sire: SINCLAIR PLAINS BOSS 5B02

MH TITAN 752

Dam: EDIE CREEK ELISEVA 106E

EDIE CREEK ELISEVA 119T

BORN 1ST
CYCLE?



CE

UDDER

BW: 84 DAM'S BW: 83 DAM WEIGHT: 1145

FORAGE

CED: N/A BW: N/A WW: N/A YW: N/A MILK: N/A

Not Registered. Could be done if requested. Lot 22 is a 3/4 brother to Lots 19, 21 and 23. These 3/4 brothers are all out of young cows who are making it work on a grass and straw diet alone. They all calved 1st cycle as 2yr olds, bred back and calved 1st cycle as 3yr olds. Our cow herd bale grazes over winter, and is never fed grain. Buy a few of these 3/4 brothers and put them together if you want a consistent calf crop.

EDIE CREEK PLAINS BOSS 41G



25/04/2019

REG# N/A

ECA 41G

Sire: SINCLAIR PLAINS BOSS 5B02 MH TITAN 752	BORN 1ST CYCLE? ✓
Dam: EDIE CREEK LADY ERICA 134E EDIE CREEK LADY ERICA 12X	CE *****
BW: 71 DAM'S BW: 84 DAM WEIGHT: 1225 CE: N/A BW: N/A WW: N/A YW: N/A MILK: N/A	UDDER *****
	FORAGE ***

Heifer Bull. Not Registered, could be in the future if requested. Lot 23 has the lightest Birth Weight of the Plains Boss sons. Lot 22 and 23 are made very similar. They are a little flatter muscled: built more like wide receivers than linebackers. Lot 23's dam comes out of the Lady Erica cow family. The original Lady Erica 1652L cow raised calves here until she was 18. With many daughters and grand daughters retained in the herd.

Can't Make it to The Sale? No Problem!

DVAuction
Broadcasting Real-Time Auctions

Never Miss An Auction Again!
Watch & Bid online for FREE!

**Visit www.DVAuction.com
and Register Today!**

VIDEOS of all the bulls will be available
online.

Please go to our website, where you can find
links to the Videos, Bidding and a **Bidding
tutorial**.

Make sure to register online for the sale at
least 24hrs before sale time.

WWW.EDIECREEKANGUS.COM

EDIE CREEK ABE 46G



24

25/04/2019

FLECKANGUS

ECA 46G

Sire: DOUBLE BAR D ABESLY 308B

EDIE CREEK EMBLAZON 87Y

Dam: EDIE CREEK ERICA 99C

CROWFOOT VALLEY CJ ERICA 7723T

BORN 1ST
CYCLE?



CE

**

UDDER

BW: 92 DAM'S BW: 75 DAM WEIGHT: 1280

FORAGE

FleckAngus. Cow Bull. We have decided to offer more F1 bulls in our sale. It is a good option for customers looking for more WW. This bull is a meat wagon. He has the most rib capacity of any bull in the sale. His dam is one of our favourite young cows. We will be using a maternal brother this summer in our herd. Put this bull on Angus cows and keep the daughters. The benefits of Hybrid vigour are free! What else is in the beef industry? The maternal Grand dam has been a terrific cow, raising calves trouble free into her teens.

EDIE CREEK ABE 133G



25

12/05/2019

FLECKANGUS

ECA 133G

Sire: DOUBLE BAR D ABESLY 308B

OCC WORTHY MAN 967W

Dam: EDIE CREEK 54Y BETSY 128A

EDIE CREEK 27C BETSY 54Y

BORN 1ST
CYCLE?



CE

**

UDDER

**

BW: 83 DAM'S BW: 75 DAM WEIGHT: 1365

FORAGE

FleckAngus. Cow Bull. Some of the best momma cows we have ever seen are Fleckvieh x Angus cross. This bull is a touch bigger, and coarser-boned than his Paternal brothers. His calves are sure to impress.

EDIE CREEK ABE 177G



30/05/2019

FLECKANGUS

ECA 177G

Sire: DOUBLE BAR D ABESLY 308B

OCC WORTHY MAN 967W

Dam: EDIE CREEK TIBBIE 44C

EDIE CREEK 307R TIBBIE 102Y

BORN 1ST
CYCLE?

X

CE

**

UDDER

BW: 98 DAM'S BW: 82 DAM WEIGHT: 1300

FORAGE

FleckAngus. Cow Bull. We really enjoyed watching these F1 bulls grow when they were calves. They get up and nurse quickly, and grow really well. With Worthy Man as the Maternal Grand Sire, this bull will transmit some very heavy muscle in his calves—they will be fancy!

EDIE CREEK ABE 175G



29/05/2019

FLECKANGUS

ECA 175G

Sire: DOUBLE BAR D ABESLY 308B

OCC MISSING LINK 830M

Dam: EDIE CREEK CAROLINE 61Z

EDIE CREEK CAROLINE 10M

BORN 1ST
CYCLE?

X

CE

*

UDDER

BW: 102 DAM'S BW: 77 DAM WEIGHT: 1235

FORAGE

FleckAngus. Cow Bull. 308B who is the sire of these F1 bulls is moderate and keeps flesh as easy as our black bulls. The Caroline cow has done really well for us, and has terrific udders. Buy these 2yr old bulls with confidence, they have been developed slowly. Our bulls graze on grass only until November. This years drought had the bulls in the yard at the end of October 2020. From October to sale day they are fed 5lbs/day of barley. With our feed shortage we also feed screenings as they are available. This winter it was a combination of any of the following - Grass screenings, sunflowers screenings, flax, oat dust and Triticale/millet screenings. This year they had green feed silage bales in their hay

Sale Day Sponsored by

UNION



FORAGE

GRAZE YEAR ROUND



Perennial Forages
Annual Forages
High Performance Alfalfa
Hybrid Fall Rye

For Seed, Contact Jonathan:
204-471-4696
www.ediecreekangus.com



RED EDIE CREEK EASY 75G



02/05/2019

REG# 2123445

ECA 75G

Sire: RED OCC EASY RED 868A

RED EDIE CRK NORSEMAN KING 91T

Dam: RED EDIE CREEK DUCHESS 80B

RED EDIE CRK CLRDO DUCHESS 29X

BORN 1ST
CYCLE?



CE

UDDER

BW: 84 DAM'S BW: 72 DAM WEIGHT: 1040

FORAGE

CE: +8 BW: -1.6 WW: 14 YW: 36 MILK: 21

Heifer Bull. The muscle expression that 75G shows is a result of his genetics, and not heavy feeding. We are selecting for a type of cattle that can efficiently convert low quality forages into high quality protein. This doesn't happen when cattle are bred for EPD's and are propped up with feedlot rations. When you take this bull home he will not melt away. He is possibly the stoutest bull in the sale, certainly well-suited for making broody cows & steers that will Finish on grass. 29X was a Hobo daughter, so a bit of linebreeding here.

EDIE CREEK EASY 141G



13/05/2019

REG# 2123535

ECA 141G

Sire: RED OCC EASY RED 868A

RED OCC EASY RED 868A

Dam: RED EDIE CREEK LUCY 133D

RED EDIE CREEK LUCY 18B

BORN 1ST
CYCLE?



CE

UDDER

BW: 80 DAM'S BW: DAM WEIGHT: 1320

FORAGE

CE: +7 BW: -1.1 WW: 20 YW: 48 MILK: 23

Heifer Bull. 141G is the result of line breeding to OCC Easy Red. Line breeding tightens up the gene pool. This in turn increases the consistency of the calf crop and increases heterosis when you breed the daughters to terminal outcross bulls. The Lucy cow family is moderate, and still has enough milk to raise a good calf on grass. Granddam 18B is one of our best Red Angus cows.

RED EDIE CREEK NEBULA 38G



24/04/2019

Reg# 2128588

ECA 38G

Sire: RED CALVO NEBULA 67C

RED OCC EASY RED 868A

Dam: RED EDIE CREEK MRS TOAST 86E

RED RIDGE SIDE MRS TOAST 2A

BORN 1ST
CYCLE?



CE

UDDER

BW: 79 DAM'S BW: 68 DAM WEIGHT: 1160

CE: +8 BW: -1.4 WW: 35 YW: 68 MILK: 24

FORAGE

Heifer Bull. Another great Nebula 67C x Easy Red combination. They all have good length, depth and will maintain their flesh with ease. 38G will be easy to find on sale day. Granddam was a heavy-milking fertile cow but was a bit flatter-muscled, more like the traditional Red Angus that we are trying to change. 38G has added a lot of muscle and depth of rib to his Granddam's genes, he is really eye-catching.

RED EDIE CREEK NEBULA 30G



23/04/2019

Reg# 2122133

ECA 30G

Sire: RED CALVO NEBULA 67C

RED OCC EASY RED 868A

Dam: EDIE CREEK VALENTINE 166E

EDIE CREEK VALENTINE 95B

BORN 1ST
CYCLE?



CE

UDDER

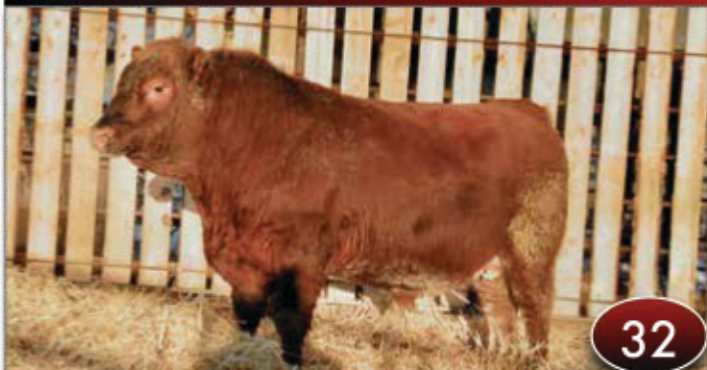
BW: 72 DAM'S BW: 71 DAM WEIGHT: 1270

CE: +11 BW: -1.7 WW: 29 YW: 58 MILK: 24

FORAGE

Heifer Bull. 30G has a nice dark red hair coat. All of these Nebula 67C sons are 3/4 brothers. This one has an added bonus of two shots of OCC Legacy 839L in the bottom side of his pedigree. The 166E cow has huge rib capacity and is a black hided cow. The granddam, 95B, was a beautifully feminine daughter of our Legacy 5Y bull, sold to Black Rose Ranch in '13.

RED EDIE CREEK EASY 22G



22/04/2019

REG# 2122126

ECA 22G

Sire: RED OCC EASY RED 868A

RED PCC COLORADO HOBO

Dam: RED EDIE CREEK MRS TOAST 31C

RED RIDGE SIDE MRS TOAST 2A

BORN 1ST
CYCLE?



CE

**

UDDER

BW: 81 DAM'S BW: 94 DAM WEIGHT: 1475

FORAGE

CED: +5 BW: -0.6 WW: 23 YW: 51 MILK: 22

Cow Bull. We predict that 22G will mature into the biggest-framed of the red bulls to sell. His dam is a bigger framed cow. She is a Colorado Hobo daughter with big rib capacity, and Easy Red is linebred to Colorado Hobo, so 22G's calves will be very uniform. His calves will pop up and grow like weeds. Full brother sold last year to Lyle Cook.



Customer Testimonial

We Have had Edie Creek Bulls in our herd for a number of years. They have proven to be extremely durable bulls with the ability to settle a large herd of cows. Edie Creek genetics have become a building block of our herd, they produce tremendous calves and many of the cows in our herd today are sired by Edie Creek bulls. The forage based genetics that Edie Creek offers has allowed us to achieve our goal of direct marketing grass-fed beef, while continuing to profit in the conventional market. If you are looking for great forage based bulls look no further than Edie Creek Angus.

Riley Kemp
Maple Meadows Farm

EDIE CREEK SQUIRT 50G



27/04/2019

REG#2131226

ECA 50G

Sire: SINCLAIR SQUIRT 6TT10

EDIE CREEK MACHO 248T

Dam: EDIE CREEK ALLICE 20C

EDIE CREEK ALLICE 21Z

BORN 1ST
CYCLE?

✓

CE

UDDER

BW: 71 DAM'S BW: 80 DAM WEIGHT: 1145

FORAGE

CED: +11 BW: -2.0 WW: 36 YW: 66 MILK: 24

Heifer Bull. This bull was born first cycle at 71lbs, grew like a weed and was weaned off at 51% of his dams weight. Impressive bull with Sleep All Night Calving Ease! Maternal Grand dam is a gorgeous Hillfire Legacy daughter. She has that feminine, wedge shape and stays in good flesh all year round.

EDIE CREEK SQUIRT 135G



13/05/2019

REG#2131336

ECA 135G

Sire: SINCLAIR SQUIRT 6TT10

OCC MAGNITUDE 805M

Dam: EDIE CREEK CAROLINE 34U

EDIE CREEK TP CAROLINE 10R

BORN 1ST
CYCLE?

X

CE

UDDER

BW: 72 DAM'S BW: 70 DAM WEIGHT: 1235

FORAGE

CED: +9 BW: -2.5 WW: 42 YW: 72 MILK: 24

Heifer Bull. We bought 6TT10 out of the Sinclair program to cross back on our Traveler (OCC) bred cows. He has averaged 74lbs on Bull calves and 65lbs on Heifer calves. I expect Lot 34 to do the same. Granddam 10R just came open now at age 15, and is an Elite Dam: productive & fertile. Daughters of this bull will be excellent cows, and steer calves will grow out well.

EDIE CREEK BIG TIME 123G



10/05/2019

Reg# 2131237

ECA 123G

Sire: EDIE CREEK BIG TIME 848C

BBAR EUREKA 9466

Dam: EDIE CREEK 38U ERICA 15Z

EDIE CREEK LADY ERICA 38U

BORN 1ST
CYCLE?



CE

**

UDDER

BW: 92 DAM'S BW: 92 DAM WEIGHT: 1390

FORAGE

CED: -5 BW: +4.9 WW: 35 YW: 56 MILK: 21

Cow Bull. Longevity bred in for generations. His dam is 9, Granddam is 12, and Great-granddam retired at the age 18—and that's just on the cow's side of the pedigree. The dam (693N) of Big Time 848C just came up open this year at 17yrs old. His granddam (907C) made it to 19 and great-granddam (1019) made it to 21! 123G is soggy-made with good overall balance, no extremes. 15Z had the high selling Titan son in last years sale.

EDIE CREEK BIG TIME 124G



10/05/2019

Reg# 2131276

ECA 124G

Sire: EDIE CREEK BIG TIME 848C

EDIE CREEK EMBLAZON 87Y

Dam: EDIE CREEK ROSE 107C

CROWFOOT ROSE OF L 7035T

BORN 1ST
CYCLE?



CE

UDDER

BW: 77 DAM'S BW: 76 DAM WEIGHT: 1335

FORAGE

CED: +6 BW: +1.0 WW: 29 YW: 41 MILK: 20

107C is a very easy fleshing, moderate tank of a cow. When we put this much fleshing in a pedigree the result is a bull that can quickly moderate frame size and add capacity. Lots of great OCC sires behind this bull, the MGS (maternal grand sire) Emblazon 87Y was lost at a young age but left behind a number of excellent & stout cows, including 107C!

EDIE CREEK BIG TIME 118G



10/05/2019 | REG# 2131249 | ECA 118G

Sire: EDIE CREEK BIG TIME 848C

OCC WORTHY MAN 967W

Dam: EDIE CREEK WM LUCY 116D

EDIE CREEK LEGACY LUCY 154U

BORN 1ST
CYCLE?



CE

**

UDDER

BW: 83 DAM'S BW: 99 DAM WEIGHT: 1185

FORAGE

CE: -4 BW: +3.8 WW: 41 YW: 66 MILK: 19

Cow Bull. This bull has excellent length and is a standout in the Big Time sire group. He appears to be drawing on the extra muscle shape that the Worthy Man bull transmitted. Maternal Granddam 154U was a great Hillfire Legacy daughter that raised calves until she was 11, and passes on flawless udders. 118G was born in the first cycle.

EDIE CREEK BIG TIME 35G



24/04/2019 | REG# 2128586 | ECA 35G

Sire: EDIE CREEK BIG TIME 848C

SAV MUSTANG 9134

Dam: EDIE CREEK 606 DIXIE ERICA 56A

OCC DIXIE ERICA 606S

BORN 1ST
CYCLE?



CE

UDDER

BW: 86 DAM'S BW: 85 DAM WEIGHT: 1490

FORAGE

CE: +5 BW: +1.6 WW: 32 YW: 53 MILK: 23

Cow Bull. Here's another very good Big Time son that is double bred to the Dixie Erica cow family, with our Donor dam 606S as his granddam. She has been the most fertile easy fleshing, best-footed cow we've had, with an excellent udder & flushing record to boot. 35G is a smooth patterned bull that will leave spritely calves and daughters that turn into great cows! It is interesting to note that our experimental outcross of breeding 606S to SAV Mustang (via A.I.) created a daughter who was much larger 56A-1490#) in just one cross!

EDIE CREEK BIG TIME 45G



25/04/2019 | Reg# 2131277 | ECA 45G

Sire: EDIE CREEK BIG TIME 848C

EDIE CREEK GREAT ONE 79Y

Dam: EDIE CREEK JUANADA 20B

EDIE CREEK JUANADA 68Z

BORN 1ST CYCLE?



CE

UDDER

BW: 77 DAM'S BW: 72 DAM WEIGHT: 1220

FORAGE

CE: +3 BW: +0.1 WW: 28 YW: 46 MILK: 17

Heifer Bull. Here is a straight 100% OCC bred bull. We bought OCC Juanada 633M (dam of 68Z) from Tim Ohlde in Kansas and she raised calves here every year for us until she was 14. The Great One 79Y bull is also out of the OCC Juanada cow family. Predictability bred in.

EDIE CREEK BIG TIME 122G



10/05/2019 | Reg# 2131239 | ECA 122G

Sire: EDIE CREEK BIG TIME 848C

OCC WORTHY MAN 967W

Dam: EDIE CREEK 34U CAROLINE 10A

EDIE CREEK CAROLINE 34U

BORN 1ST CYCLE?



CE

UDDER

BW: 75 DAM'S BW: 86 DAM WEIGHT: 1330

FORAGE

CE: +4 BW: +0.9 WW: 38 YW: 64 MILK: 18

Heifer Bull. Dam of this very complete bull is a maternal sister to the lot 34 bull. All the bulls offered in this sale were born in the first 31 days of our calving season. Most were born in the first cycle. For profitability, nothing is more important to your bottom line than cows coming home pregnant & raising a good calf. In 2020 90% of our cow herd calved in the first 30 days. Our cows bale graze all winter with zero grain or starch. This is a truly low-input herd of cows. Select breeding stock from Edie Creek Angus with confidence.



New Rosedale Feedmill

FEEDING YOUR NEEDS

Edie Creek Angus would like to thank New Rosedale Feedmill for making quality mineral products that we use in our herd & for being a Sale Day Sponsor!

Check them out at
www.nrfeedmill.com

**** Scrotal Circumferences & Weights ****
will be available on Sale Day

WWW.EDIECREEKANGUS.COM

Please check out our website for more information.



Look us up on Twitter: @ediecreekangus for a unique "inside view" of daily life at Edie Creek Angus!

****Please Note****

SALE ORDER is the same as the catalog order.

**** ALSO ****

Bulls will be brought into the sale ring in pairs - (2 at a time), with their catalog page mates - but will be sold individually one after the other.

**** Semen Interest ****

Edie Creek Angus reserves a 1/3 semen interest & the right to collect semen for in-herd use on all Bulls selling at your convenience and our cost.

EDIE CREEK TITAN 72G



01/05/2019 REG#2123443 ECA 72G

Sire: EDIE CREEK TITAN 23D

MH ADMIRAL 34

Dam: MH DIXIE ERICA 678

MH DIXIE ERICA 7110

BORN 1ST CYCLE?



CE

UDDER

BW: 79 DAM'S BW: 67 DAM WEIGHT: 1185

FORAGE

GED: +11.5 BW: -1.4 WW: 35 YW: 68 MILK: 24

Heifer Bull. 72G has a tightly bred pedigree with three shots of OCC Great Plains 943G up close in the pedigree. Great Plains is known for making top quality fertile daughters, and sons that have high libido & get cows settled. Great Plains cattle do not have the same "rounder" shape as the heavier Traveler (OCC) bred cattle. But when you combine the two they create well-balanced cattle. Sire, 23D was used for one season, then sold to Doug Northam, Rapid City, MB. Note that Lot 17 is a full brother to 23D, and their OCC Legacy-Sired dam, ECA 66W is pictured there.

EDIE CREEK TITAN 83G



04/05/2019 REG#2123454 ECA 83G

Sire: EDIE CREEK TITAN 23D

MH ADMIRAL 34

Dam: MH LUCY 631

MH LUCY 8122

BORN 1ST CYCLE?



CE

UDDER

BW: 70 DAM'S BW: 80 DAM WEIGHT: 1325

FORAGE

GED: +12 BW: -2.7 WW: 24 YW: 46 MILK: 23

Heifer Bull. 7/8 Brother to lot 41. No surprises in this bulls pedigree-100% tried & true cattle with a proven resume of success in all-Forage production systems. Take home lots 41 and 42 and make large strides forward in the foot & udder quality of your cowherd. The sire of lots 41 and 42 (Titan 23D) has a full brother selling in this sale as lot 17. Take a look at lot 17 to see a picture of the beautiful OCC Legacy 839L daughter in their pedigree.

EDIE CREEK TITAN 110G



08/05/2019

REG# N/A

ECA 110G

Sire: MH TITAN 752

MH VIPER 81

Dam: MH LUCY 621

MH LUCY 380

BORN 1ST
CYCLE?



CE

UDDER

BW: 76 DAM'S BW: 65 DAM WEIGHT: 1190

EPD'S NOT CURRENTLY AVAILABLE

FORAGE

**

Heifer Bull. Not Registered, Could be done in the American Angus herd book if requested. Viper is a full brother to the dam of Titan (OCC Homer x MH Melisa 1147 x OCC Anchor). This bull is extra long-spined. He had a maternal brother sell in last year's sale to Kaartinen's at Eriksdale. Titan bred cows last summer as a 13yr old bull. A straight MH-pedigree means more generations than we've been at this game—committed to the same goals of longevity, fertility & functionality in a Forage-only system!

EDIE CREEK TITAN 71G



01/05/2019

REG# 2130537

ECA 71G

Sire: MH TITAN 752

MH ADMIRAL 34

Dam: MH FRANCES 622

MH FRANCES 186

BORN 1ST
CYCLE?



CE

UDDER

BW: 79 DAM'S BW: 71 DAM WEIGHT: 1250

CE: +10 BW: -0.7 WW: 22 YW: 43 MILK: 18

FORAGE

**

Heifer Bull. This bull is double bred to Titan, as the 186 cow is a Titan daughter. She is now 10, and doesn't look to be slowing down any time soon. 71G is flatter muscled than our OCC-bred cattle, and will work very well on heifers. We expect him to sire feminine, finer-boned cows. Finer bone structure has been correlated positively with finer-grained beef, which is by nature more tender than coarser-grained beef. This muscle-type results in a great beef eating experience without the extra fattening required of feedlot types.

EDIE CREEK FULL BORE 153G



19/05/2019

Reg# 2131848

ECA 153G

Sire: NCC FULL BORE 629

CROWFOOT MACHO 4549P

Dam: CROWFOOT VALLEY CJ ERICA 7723T

CROWFOOT KAWICH 1758L

BORN 1ST
CYCLE?

X

CE

**

UDDER

BW: 86 DAM'S BW: 74 DAM WEIGHT: 1235

FORAGE

CED: +6 BW: +1.3 WW: 30 YW: 53 MILK: 26

Cow Bull. 7723T is a 13yr old cow who has placed many great bulls in our past sales, including a tie for the highest selling bull we have ever had. 7723T was never lame, calved every year unassisted. We plan on using a maternal brother to lot 45 on our own heifers this summer: ECA 38H—born early 1st cycle in 2020! Sire NCC Full Bore 629 goes back to the 17 yr-old OCC Juanada 701K cow on his dam side. We develop our bulls slowly, to ensure they are ready to go out and breed a big group of cows and have a long career doing it.

EDIE CREEK FULL BORE 139G



13/05/2019

Reg# 2131849

ECA 139G

Sire: NCC FULL BORE 629

EDIE CREEK 839L LEGACY 5Y

Dam: EDIE CREEK KAREN 94B

EDIE CREEK KAREN 118X

BORN 1ST
CYCLE?

X

CE

**

UDDER

BW: 96 DAM'S BW: 65 DAM WEIGHT: 1246

FORAGE

CED: +4 BW: +1.5 WW: 47 YW: 74 MILK: 24

**

Cow Bull. This bull has a bit more leg, and his calves will have a longer frame growth period. The Karen cow family goes back to a pathfinder donor cow we bought from Ohlides, OCC Karen 759N. Legacy 5Y is probably the most powerful OCC Legacy son we have ever raised. We don't feed our bulls to look as impressive as possible as a 2yr old bull. We feel that would shorten their career. Many bulls are fed a finishing ration in their development years. We are feeding our bulls for a long career in the reproductive realm.

EDIE CREEK RITO 121G



10/05/2019

REG#2131240

ECA 121G

Sire: CHAPMAN RITO 6512

EDIE CREEK EMBLAZON 87Y

Dam: EDIE CREEK CAROLINE 86C

EDIE CREEK CAROLINE 10M

BORN 1ST
CYCLE?



CE

**

UDDER

BW: 84 DAM'S BW: 57 DAM WEIGHT: 1280

FORAGE

CED: +5 BW: +0.7 WW: 50 YW: 75 MILK: 18

Cow Bull. The 10M cow that is pictured above raised 15 calves with an average WW ratio of 102, and retired at age 14. 86C is a beautiful cow in her own right, with an absolutely flawless udder. She had a Titan son sell in 2020 sale to Kagan Sirett in Alberta. The Rito 6512 bull is a son of Sinclair Rito 9R7. 6512 goes back to the same Lady Erica cow family that we have had terrific success with here over the years, which is why we chose him—the cows behind him. Expect the Rito sons to sire good hardy calves with a touch more growth & bone.

EDIE CREEK RITO 79G



02/05/2019

REG#2131653

ECA 79G

Sire: CHAPMAN RITO 6512

OCC WORTHY MAN 967W

Dam: EDIE CREEK JUANADA 11C

EDIE CREEK JUANADA 16Z

BORN 1ST
CYCLE?



CE

**

UDDER

BW: 84 DAM'S BW: 75 DAM WEIGHT: 1395

FORAGE

CED: +3 BW: +0.5 WW: 34 YW: 53 MILK: 17

Cow Bull. This bull is the most impressive of the Rito sons. He pulled a few extra strands of DNA from the OCC Worthy Man 967W bull. The dam of lot 48 has calved 1st cycle every year, averaging 103 for her WW index. Her dam, 16Z is an OCC Great Plains daughter, in fact she is a full sister to our Great One 79Y bull, and our awesome Juanada 62Y cow.

EDIE CREEK RITO 128G



11/05/2019

REG#2131260

ECA 128G

Sire: CHAPMAN RITO 6512

KOUPAL JUNEAU 797

Dam: EDIE CREEK FLORA 50B

EDIE CREEK ML830M FLORA 4Y

BORN 1ST
CYCLE?



CE

**

UDDER

BW: 92 DAM'S BW: 76 DAM WEIGHT: 1415

FORAGE

CE: +1 BW: +2.5 WW: 56 YW: 93 MILK: 20

**

Cow Bull. Lot 49 is the biggest framed of the Rito Bulls. If you are looking for some extra weaning weight Lot 49 can do it. The daughters will also turn into useful cows—the Flora cow family is fertile and very phenotypically correct. Granddam 4Y had the high selling bull in 2019, Sold to Slepicka Livestock in the North Interlake of MB.



Customer Testimonial

We have our cattle on some of the toughest pastures in Manitoba. So our cull rate tends to be very high.

We've used bulls from various sources with poor results especially in the first year of being on our place.

Edie Creek bulls survived and got the job done. I've said different times our pastures need cattle that can think. And that's where the Edie Creek bulls seem to be ahead of the competition! They certainly don't come off breeding season in show condition but snap back quickly.

Nelson Plett
Plett Cattle & Honey Ltd

EDIE CREEK HUNTER 147G



16/05/2019

REG#2128591

ECA 147G

Sire: EDIE CREEK HUNTER 2D

RED OCC EASY RED 868A

Dam: RED EDIE CREEK BLACKBIRD 58E

RED RIDGE SIDE BLACKBIRD 23A

BORN 1ST
CYCLE?



CE

UDDER

BW: 78 DAM'S BW: 70 DAM WEIGHT: 1120

FORAGE

CE: +8 BW: -2.1 WW: 33 YW: 67 MILK: 23

Black/Red Carrier. Heifer Bull. The mother of this bull is a good young Red Angus cow. Lot 50 expresses the easy fleshing and capacity that Easy Red passes on every time. He also takes on many aspects of his sire, Hunter 2D, (the embryo son of our great 606S cow that sold last year to Peter Kotzef from Ontario) such as length of spine and masculine character.

EDIE CREEK HUNTER 140G



13/05/2019

REG#2131236

ECA 140G

Sire: EDIE CREEK HUNTER 2D

EDIE CREEK GREAT ONE 79Y

Dam: EDIE CREEK LADY ERICA 99E

EDIE CREEK 38U LADY ERICA 17A

BORN 1ST
CYCLE?



CE

UDDER

BW: 66 DAM'S BW: 70 DAM WEIGHT: 1120

FORAGE

CE: +11 BW: -2.8 WW: 27 YW: 46 MILK: 20

Heifer Bull. Excellent calving ease here, with a nice small head. The 99E cow is has a nice bonsma wedge shape with a tidy udder. All our heifer calves are developed with out any grain and are exposed to bulls for 42 days. If they do not make it, we market them down the road as GrassFinished Beef. Our Cow herd is exposed to bulls for 50 days, and is never fed any grain. They typically walk about 1/2 mile one way for water. In the winter that walk can be a mile one way, and some choose to just eat snow.

EDIE CREEK TITAN 157G



21/05/2019

Reg# 2131245

ECA 157G

Sire: MH TITAN 752

MH TUBBY 56

Dam: EDIE CREEK DIXIE ERICA 74D

EDIE CREEK DIXIE ERICA 71B

BORN 1ST
CYCLE?

X

CE

UDDER

BW: 75 DAM'S BW: 64 DAM WEIGHT: 1220

FORAGE

CE: +9 BW: +0.2 WW: 25 YW: 58 MILK: 19

Heifer Bull. Nice easy fleshing Titan son here. Maternal Grand dam 71B is a terrific cow. We will be using a son of hers this summer. 4 out of 5 calves have been born 1st cycle, with one being second cycle. The dam of lot 52 is deep, with lots of rib and a great udder. 2 out of her 3 calves have been born 1st cycle, and all have made the cut. This bull will sire 1250lb cows that have tidy udders and can thrive in a low input system.

EDIE CREEK TITAN 158G



06/05/2019

Reg# 2123494

ECA 95G

Sire: MH TITAN 752

OCTORARO BALLOT STO 6

Dam: MH DIXIE ERICA 660

MH DIXIE ERICA 31

BORN 1ST
CYCLE?

X

CE

UDDER

BW: 80 DAM'S BW: N/A DAM WEIGHT: 1395

FORAGE

CE: +8.5 BW: +0.5 WW: 26 YW: 51 MILK: 19

Titan Son. Titan re wrote the book here for longevity in a herd sire. He bred cows this past summer as a 13yr old bull. He was never lame a day in his life. Titan Bred in many multi sire breeding groups without being injured. Some would call that luck, we would lean more to intelligent.

“Why use an Edie Creek Angus 2-Year Old Bull?”

We are 20 years into the journey of genetic progress and have learned many lessons along the way. There is no such thing as a “free lunch”: not in physics, economics, or in producing beef cattle. The math is simple. The more time and money you invest into your cattle the more you must get out of them. Solar Energy and Hybrid Vigour are the closest things we have to a “free lunch”, so we need to maximize their **cumulative benefits**, with cow herds that efficiently turn low quality forages (grass) into high quality protein (beef).

Winter or summer, our cows take care of their own daily needs on a zero-starch, forage-only program. They are **fertile**, moderate and have excellent udders. They calve on pasture and take care of their own calves. To build on a foundation of longevity, we try to use Herdsires that have dams and grandams that have produced calves well into their teens. The oldest dam currently would be 17yr old OCC Dixie Erica 693N and her dam was productive until she was 19yrs old.

Reproduction is the most important factor affecting **profitability**. We have tightened the screws on **reproductive longevity** by shortening the breeding seasons and using multi-sire breeding groups. Heifers are exposed to bulls for **42 days**, and the cows see bulls for 50 days. The cows had Angus bulls for the first **30 days**, and a Fleckvieh bull for the last cycle—thus ensuring only the most fertile females produce offspring that we select purebred parent stock from. **Multi-sire** breeding groups ensure that the most fertile bulls get the job done — another step in improving **fertility**. After all, reproduction is 5x more important than growth rate, and 10x more important than carcass quality when it comes to profit.

Our gene pool stems from **proven** descendants of renowned **maternal** bloodlines such as Traveler, Emulation, Quantum, Shoshone & Wye that have thrived in low-input environments across the continent. We have been using A.I., & E.T. to help us move ahead with our gene pool, not making it wider, but deeper. This enables us to offer a more consistent pen of bulls every year: prepotently bred bulls which stamp a consistent pen of calves, including daughters that can be counted on to become reliable mama cows.

We have come to believe that creating a maternally efficient cowherd is the foundation of beef production. **Matching your cowherd to the resources in your environment** is another key step to reducing your inputs/costs. Edie Creek Angus bulls can help you with both of those, creating more profit within your cow herd.

Our bulls are bred with **generations** of fleshing ability, fertility, capacity, correct feet, longevity and they sire beautiful udders. Our bulls will sire calves that are born easily and nurse quickly.

They will establish an efficient, maternal “Cowherd Factory” for you which can then be mated with terminal sires to add hybrid vigour, performance and the “flavour of the day” in hide colour. Doing this will create a **functional**, long-living cowherd able to wean calves with maximum efficiency in your commercial ranch environment.

When you buy 2-year-old bulls from Edie Creek Angus, you get a **carefully developed** breeding bull. You can turn them out and expect them to breed more cows than yearlings and come back in better shape. They are more durable and last under real-world breeding conditions. **Longevity** is very important in your Herd Bulls, just as it is in your cowherd! By developing them for an additional year it allows us to sort them in our pastures instead of yours.

Increasing the profitability of the commercial cattle producer is the focus of our breeding program.

We really enjoy talking about beef production, so please give us a call or stop by for a tour and we can talk about our breeding program or any of the cattle for sale.

— Stefan Bouw

2020 at a Glance



Edie Creek Angus:

ADAPTING GENETICS & MANAGEMENT PRACTICES
TO CREATE PROFIT\$ FOR LOW-INPUT SYSTEMS

SEE MORE:  @EDIECREEKANGUS

WWW.EDIECREEKANGUS.COM



ECA 71B, Maternal Grand Dam to Lot 52



13-Yr Old Shoshone Ferrall 6340 dtr



OCC Easy Red 868A

PAST HIGH SELLERS



~ EDIE CREEK ANGUS ~
BREEDING BULLS FOR GRASS FARMERS



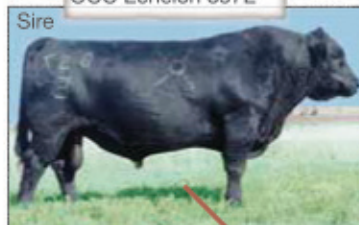
The Edie Creek Angus Crew, Summer 2020
Ranchers. Ranch-hers & Jr Ranchers!

THANK YOU TO OUR 2020 CUSTOMERS!

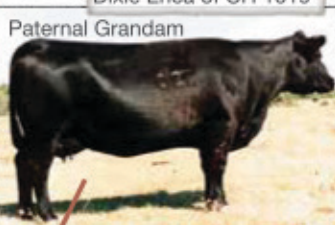
- Reed Rigney
- Marshall Rempel
- Art & Jackie
Jonasson
- Kevin Cherpin
- Peter Kotzeff, DVM
- Nelson Plett
- Charlene & Craig
Kartinen
- Kagan Sirett
- Rick & Shelley
Chartrand
- Nathan Plett
- Lyle Cook
- Hans Myhre
- Gemstone Cattle Co.
- Chris Schaap & JP
Zuccaro
- Ian Sculthorpe
- Randy & Shelley
Bjarnarson
- Neil Thage
- Andrew Miller
- Steve Lewis
- Mark Good
- Daniel Peters
- Steven & Treyna
Reykdal
- MBFI
- Mark Hussar
- Don Eadie
- Kopec Farms
- Micha Gerber
- Wes Dueck
- Garth Lussier
- Marty Budge
- Kevin Janzen
- Joe & Melissa
Sletmoen
- 6U Cattle Co
- Darwin Gork
- Bobby Bangle
- Lew Plett
- Floyd Loewen

FOUNDATION GENETICS AT EDIE CREEK ANGUS ~ OCC Legacy 839L ~

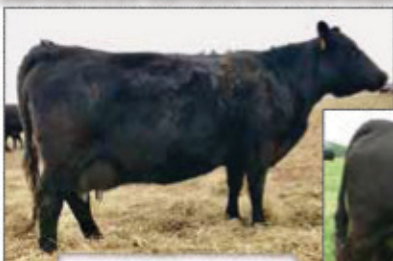
OCC Echelon 857E



Dixie Erica of CH 1019



OCC Legacy 839L



OCC Legacy Daughter
ECA 64B



OCC Legacy Daughter
ECA 66W



OCC Legacy Son: ECA 5Y

OCC Legacy 839L was truly the foundation of the Edie Creek Program. He was owned by Crowfoot Cattle Co, Hillfire Angus, and B.B.A.R., they bought him and collected semen on him. Legacy was a masculine, hormonally balanced, athletic breeding machine that Duplicates his own type in his sons, and leaves broody, deep, easy fleshing cows. We were fortunate to walk several sons in our pastures, as well as use him in our A.I. program. Sire Echelon is a son of the great Dixie Erica of CH 1019 cow, the OCC matron of Emblazon, Focus, Great Plains and many Foundational OCC sires. Having lived until age 21, she set the bar for longevity, productivity, and had one of the most refined udder structures of any Angus cow. You will also find the Dixie Erica of CH 1019 cow in our Red Angus cattle. The pedigree of our OCC Easy Red 868A bull has 1019 in it 9 times. We plan on turning back to OCC Legacy in the near future for our herd.

FOUNDATION GENETICS AT EDIE CREEK ANGUS

~ OCC Great Plains 943G ~

~ OCC Dixie Erica 907C ~

N Bar Emulation EXT

Sire:



Dixie Erica of CH 1019

Dam



OCC Great Plains 943G



Full Sister to Great Plains:
OCC Dixie Erica 907C



Great Plains Son:
MH Titan 752



Dixie Erica 907C Daughter:
OCC Dixie Erica 693N, Dam
of ECA Big Time 848C

OCC Great Plains and OCC Dixie Erica 907C can be found in almost all the pedigrees of our cow herd. In the words of Tim Ohlde, "Great Plains excels his sire (N Bar Emulation EXT) in every EPD", from carcass merit to growth, and his daughters are Structurally correct, highly fertile cows with great mothering instincts. Many breeders focused on maternal quality used Emulation back on Traveler bred cattle with great success. Our goal was to maintain maternal aspects & longevity, which is why we pursued the Great Plains line—keeping with the Dixie Erica 1019 cow (dam of many great OCC bulls) which we could trust. MH Titan & ECA Great One 79Y were both excellent sons of OCC Great Plains. Donor dam 693N is a great example of longevity, fertility & structural correctness. She is now 17, her dam 907C was 19 and great grand dam 1019 made it to 21.

Bull Development

These bulls have been raised on their mothers' milk and grass. They were weaned in late November, then brought in and fed 2.5 lbs of barley and a rotation of free choice grass straw or 1st cut hay. In May they were turned out to pasture, with no supplements, where they grew well until the end of October. With the drought causing feed supplies to be tight here this winter, the bulls got a wide variety of feed, with the firm goal of developing them into hard muscled bulls, not dough boys. In the bunk they received 5lbs of Barley and a mix of Grass Seed Screenings/Flax/Oat dust/Triticale screenings. Their hay rings had green feed silage bales. They have not been pushed with hard feed so that they will breed longer for you.

Bull Program

Bulls can be kept at Edie Creek Angus for \$2/day until May 1st. After that, the cost will be \$3/day. Free delivery available in Manitoba. **If you haul your bull on Sale day we will give you a \$50 discount on each bull.**

TERMS AND CONDITIONS

The terms of sale are by cash or cheque. Settlement to be made immediately after the completion of the sale. The right of property will not pass until after settlement is made. Bulls will not be released until settlement is made.

Bids:

Every animal entering the sale ring will be sold to the highest bidder and may be subject to a minimum/reserve bid.

Disputes:

In case of disputes, bidding will be re-opened between the parties involved. If no further bid is made, the buyer will be the person from whom the auctioneer accepted the last bid. The auctioneer's decision on all disputes is final.

Announcements and Changes:

All announcements and changes made from the auction block will take precedence over the printed matter in this catalogue. Buyers are therefore cautioned to pay close attention to any such announcements.

Purchaser's Risk:

Each animal becomes the risk of the purchaser as soon as the auctioneers hammer falls for the final time.

Liabilities:

All persons attending the sale do so at their own risk and sellers assume no liability, legal or otherwise, for any accidents occurring in or about the premises.

GUARANTEE:

The **Bulls** have been evaluated for breeding soundness and semen quality by Beausejour Animal Hospital. We guarantee to provide you with a **sound, fertile bull** at the point of sale. Should your bull fail to be a satisfactory breeder in his first breeding season, he will be **replaced** with a bull of equal value **or** a credit will be given towards the purchase of another bull. We will not provide the replacement or credit for a bull that is physically injured or mismanaged. It is the responsibility of the buyer to insure their bulls.

***** BULL RATINGS EXPLAINED:**

Calving Ease:

Based on the bull's birthweight, his parents' birthweight, and his own EPD's. Also based on the assumption that the bull will be breeding small-framed Angus/British cattle--if the bull will be breeding larger-framed Continental cattle, a three-star (***) bull should work on heifers without any trouble. These are simply **guidelines** to help your decision making. You are ultimately responsible for the matings of your own cattle.

Calving Ease Rating:

*** - Suitable for breeding cows only - 100 lb+ Birth weights possible

**** - Suitable for breeding smaller cows-90 lb+ Birth weights possible

***** - Suitable for breeding cows and larger-framed, mature heifers - 85 lb BW's

***** - Suitable for breeding heifers & cows too

***** - HEIFER BULL, easy deliveries with vigorous calves at birth!

Udder Rating:

Based on the quality of the dam's udder structure and teat shape and size. Rated between "1" - "5", a score of "3" would be an average, functional udder, while a score of "5" would be a perfectly level udder with small, shapely teats.

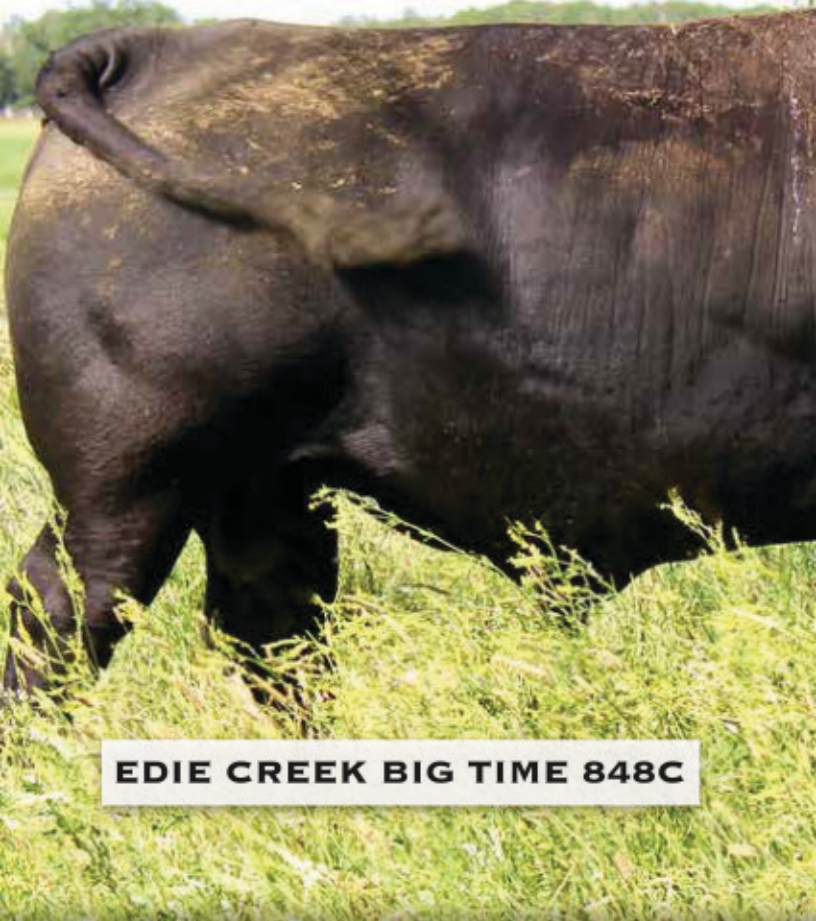
Forage Rating:

Designed to predict the ability of the bull's offspring to thrive in a forage-only environment. The forage rating is also a suitable indicator of the bull's own **ability to stay in good flesh** on a low-energy ration ("easy-keeping-ness"). Rated between "1" - "5", a score of "3" would be moderately easy fleshing, while a score of "5" would be very easy fleshing and his offspring would finish on forages alone.

Born 1st Cycle? This indicates if a bull was born in the first 21 days of the calving season. This includes bulls that were born early from short gestation. **All Angus bulls on offer were born in the first 31 days of our calving season.**

Notes:

**EDIE CREEK ANGUS
59018 STONERIDGE RD
ANDLA, MB
R5L 0H9**



EDIE CREEK BIG TIME 848C



**Quality Grass-Based
Maternal Genetics**

JONATHAN BOUW: 204-471-4696

STEFAN BOUW: 204-232-1620

TWITTER: @ediecreekangus

www.ediecreekangus.com